



Huawei optical module disassembly

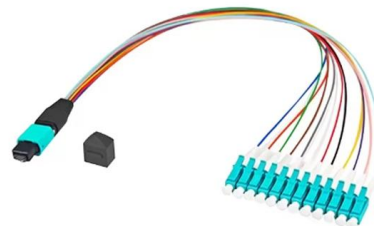


Replacing an Optical or Electrical Module

Before removing or installing an optical or electrical module, ensure that no fiber jumpers are connected to the optical ports or no network cables are connected to the electrical ports on the module.

Replacing an Optical Module

Cover unconnected optical modules with dust plugs. Unplug the optical fibers from the optical module before removing it. Install or remove optical fibers carefully to avoid damaging the fiber connectors.



HUAWEI WDM Replacing the Optical Module

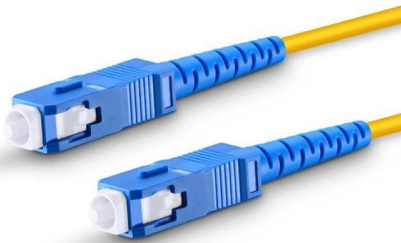
HUAWEI WDM replacing the optical module video shows you how to replace an optical module. HUAWEI WDM Documentation:

How To Read Optical Module Information On Huawei Switches

The following uses the Moduletek SFP-10G-LR module connected to a Huawei S6700 switch as



an example to introduce how to read information of the connected optical module on a Huawei switch.



Replacing an Optical Module

Ensure that the optical module is correctly oriented and gently push it into the optical port until you hear a click. The new optical module must have the same optical parameters as the remote optical

Installing Optical Transceivers and Connecting Optical Fibers

Huawei optical modules are recommended. The optical modules from other vendors may cause faults on the USG due to incompatibility.



Replacing an Optical Module

Optical modules are electrostatic-sensitive components; therefore, you must take ESD protective measures when replacing optical modules. Do not insert an optical module backwards. If an optical



Huawei Technical Support

Discover how to view the serial number of an optical module with step-by-step guidance from Huawei Technical Support.



Pulling out the optical module and shutdown interface causes the

Solve the problem of alarm indicator steady on by clear the alarm after it is confirmed that customer pull out the optical module and shutdown interface manually

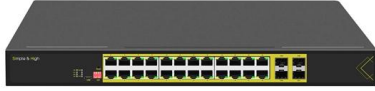
Troubleshooting for Optical Modules on Huawei Switch

Troubleshooting for Optical Modules on Huawei Switch Many friends feedback that one problems occurred when using optical modules on switches, now we are



port is disconnected due to optical module faulty

Use the idle optical module on the storage device to exchange with PO and check whether the fault is rectified. If the fault persists, it indicates that the optical module is not faulty. If



Optical Module Solutions for Huawei S5700/S5720 Series Switches

When using switches, we may encounter many confusions, such as what types of optical modules are needed for different models of Huawei switches, and how to resolve issues encountered

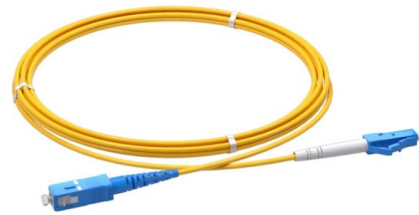


Replacing an Optical Module

An optical module is an electrostatic sensitive device. Therefore, you must take antistatic measures during the whole process of replacing an optical module to prevent the optical module from being

Optical Module: The Device Cannot Display Any Optical Module

Call Huawei global service hotline or contact software maintenance engineers to verify the software version. If allowed, reboot the device or power off and restart the device. Services on the device are



Replacing an Optical Module

Optical modules are electrostatic-sensitive components; therefore, you must take ESD protection measures when replacing optical modules. Do not insert an optical module reversely. If an optical

Typical Troubleshooting Cases of Optical Module

General Optical Module Troubleshooting Procedure Check whether an optical module is a bogus one. An optical module delivered by Huawei is uniquely identified by an SN. If two or more optical



What Is an Optical Module

An optical module is a device for converting electrical signals to optical signals and vice versa, widely used in telecommunications and data centers.



Installing Optical Modules

The device must use optical or copper modules recommended on the configurator because non-Huawei-certified optical or copper modules cannot ensure transmission reliability and may affect service



Deep Dive Teardown of the Huawei OSG040001 Optical

Deep Dive Teardown of the Huawei OSG040001 Optical Transceiver Unit. The

Replacing an Optical Module

Before replacing an optical module, determine in which cabinet and chassis the optical module is installed, find the optical module in the chassis, and attach a label to the optical module.



Replacing an Optical Module

Release the locking clip on the fiber connector, gently push the fiber connector inward, and then pull out the optical fiber. After removing the optical fibers from the optical module, cover the connectors with



Optical Module Installation and Replacement

The method used to install a copper transceiver module is the same, except that the copper transceiver module connects to a network cable instead of optical fibers. Never look directly into an optical



Replacing an Optical Module

Impact on the System Replacing an optical module will interrupt services on the corresponding optical fiber. If any other host path is available, replacing an optical module will not affect services.

HUAWEI OM3877FX200 800G Optical Transceiver Module Teardown

HUAWEI OM3877FX200 800G Optical Transceiver Module features, dismantling, internal and block diagram images, parts



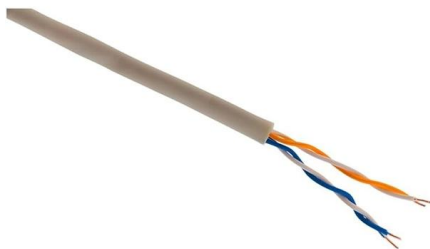


Replacing an Optical Module

Before replacing an optical module, determine in which cabinet and chassis the optical module is installed, find the optical module in the chassis, and attach a label on the optical module.

Replacing an Optical Module

Huawei-certified optical modules are strongly recommended because non-Huawei-certified optical modules cannot ensure transmission reliability and may affect service stability. Optical modules are



Optical Module: The Device Cannot Display Any Optical Module

Call Huawei global service hotline or contact software maintenance engineers to verify the software version. If allowed, reboot the device or power off and restart the device. Services on

Displaying Optical Module Information

When certifying an optical module, Huawei comprehensively verifies the functions of the optical module to ensure the optical module quality. The functions include the installation and removal, transmit and



Replacing an Optical Module

Huawei is not responsible for any problem caused by the use of non-Huawei-certified optical modules and will not fix such problems. Replacing an optical module interrupts service transmission on the

Contact Us

For datasheets, pricing, or custom telecom energy solutions, please visit:
<https://koskolong.co.za>