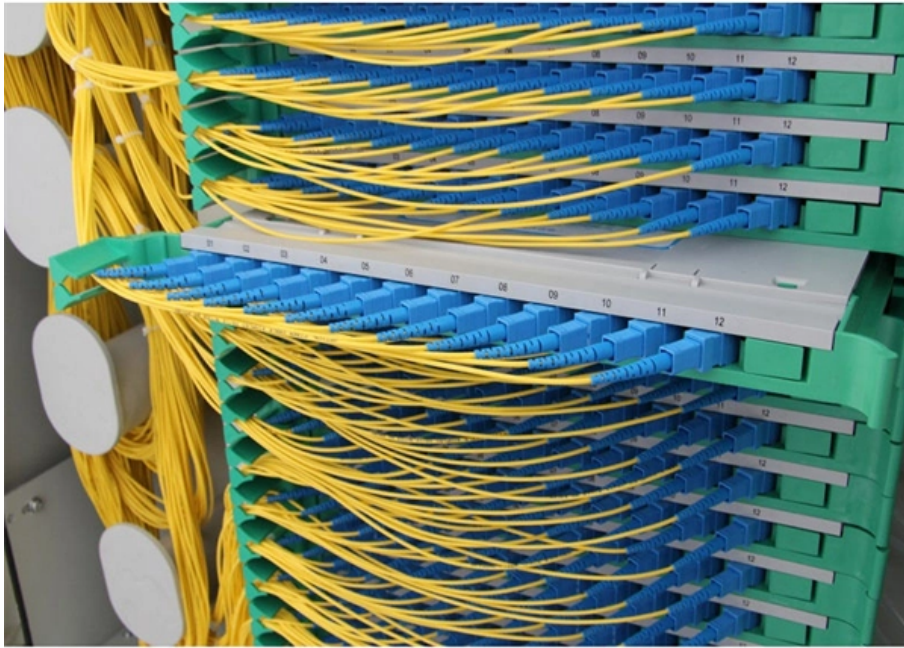




**Adam Tas Corridor Energy**

# **In Stock Transparent Optical Cable G 654**





## In Stock Transparent Optical Cable G 654

---

### What is ITU-T G.654 Fiber

ITU-T Recommend G.654 fiber is a cut-off shifted single-mode optical fiber especially used for high bandwidth long distance transmission. The G.654



### Introduction to

Optic fiber is the key to fiber optic network. What is fiber optic network? There are seven kinds of optic fiber according to ITU standard: G651, G652,



### TXF Optical Fiber , Large Effective Area G.654.E Fiber

Corning's TXF optical fiber is G.654.E compliant and the ultra-low-loss, large effective area terrestrial fiber is cost-effective for terrestrial core networks.

### TXF® Optical Fiber , G.654.E Fiber , Corning

The superior attributes of TXF ® optical fiber, compliant to ITU-T G.654.E, allow for the



provision of an additional network margin that can be leveraged to enable reliable, high-data-rate transmissions over



### ZTO G654E Ultra Low Loss and Large Effective Area Fibre

G. 654 fiber is a single-mode fiber with a pure silica core, designed to minimize loss at a wavelength of 1550 nm. It was developed in the mid-1980s for long-distance



### ITU-T G.654.E Fiber, PureAdvance for Terrestrial Long-Haul Networks

G.654.E were introduced and have been extensively deployed worldwide. G.654.E fiber is suitable for long-haul high-capacity terrestrial optical transmission links, supporting to



### G.654.E Fibre Cable

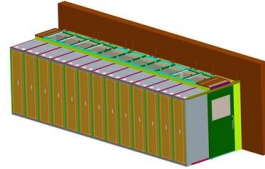
The cable acts as a mechanical and environmental shield, protecting the fibre from stress, moisture, temperature changes, and other hazards encountered over its service life. The longevity of an optical





## G.654.E optical fibers for high-data-rate terrestrial transmission

We examine here several aspects of G.654.E fiber in terrestrial systems including modeled and experimentally measured transmission reach, the use of Raman amplification with pump

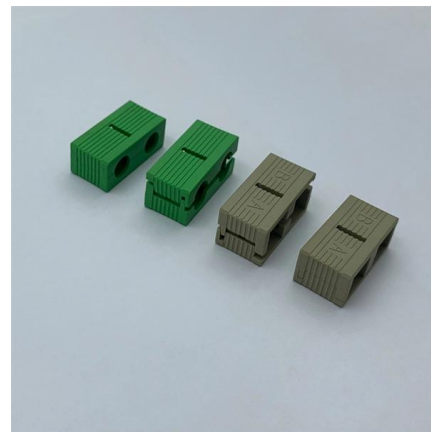


## ITU-T Rec. G.654 (07/2010) Characteristics of a cut-off shifted, single

Summary Recommendation ITU-T G.654 describes the geometrical, mechanical and transmission attributes of a single-mode optical fibre and cable which has the zero-dispersion wavelength around

## G.654E Optical Fiber

G.654E Futong's G.654E single mode optical fiber enables customers to construct high performance optical communication network international standards including ITU-T G.654.E, it has considerably low



## What is G.654.E fibre? What scenarios is it suitable for?

At present, the operators in the inter-provincial and intra-provincial trunk cable construction, the use of G.654.E optical fibre cable length of nearly 15,000 km,



### **GL FIBER® G.654.E Bend-Insensitive Fiber**

Demand of G.654.E fibre and cable is rapidly increasing in these years, it would contribute more for the improvement of optical network in future. GL FIBER's FarBand® Ultra delivers both advantages in a



### **Corning® TXF® Optical Fiber**

The superior attributes of TXF® optical fiber, compliant to ITU-T G.654.E, allow for the provision of an additional network margin that can be leveraged to enable

### **High-Speed Long-Haul Optical Fiber Solution**

As the demand for high-speed and long-haul optical communication continues to grow, the selection of the right fiber optic solution becomes crucial. G.654.E single-mode fiber is specifically





## **G.654.E Optical Fiber: Low-Loss, Large Effective Area**

Compared to standard G.652.D fiber, G.654.E offers superior bend resistance and lower chromatic dispersion, making it ideal for 400G/800G

## **Single-Mode Optical Fiber G652D G654D G657A1 G657A2 G657b3**

2. Full compatibility with all G.652 fibres for any applications  
3. Low attenuation satisfying the operation demand in O-E-S-C-L band  
4. Low PMD satisfying high bit-rate and long distance transmission

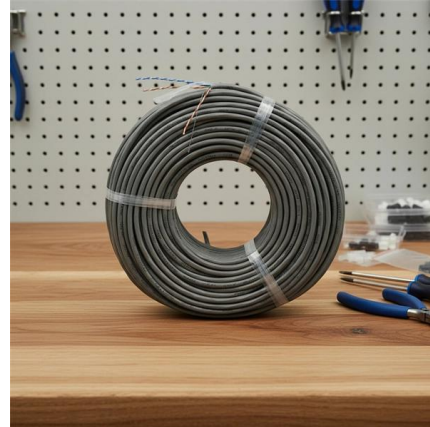


## **G654.E Ultra-Low Loss Large Effective Area Optical Fiber**

The G.654.E is a single-mode optical fiber engineered specifically for ultra-long-haul and submarine networks. It features a large effective area and ultra-low attenuation.

## **The Difference Between G652,G657A,G655 And G654**

G654:Ultra low loss optical fiber, mainly used for transoceanic optical cable. The common core is pure SiO<sub>2</sub>,while the ordinary ones need to be doped



### **Ultra-low loss terrestrial long-haul fibers PureAdvance(TM) series**

Ultra-low loss (ULL) optical fibers, PureAdvance(TM) series compliant with G.654.E, support high-capacity long-haul terrestrial networks. Employing pure silica core technologies, we promise to contribute to



### **GL FIBER® ITU-T G.654 Low-loss & Bend-insensitive Fiber**

GL FIBER® fibre complies with or even exceeds the ITU-T G.654.B/E recommendation and IEC 60793-2-50 B1.2 Optical Fibre Specification. GL FIBER tightens many parameters of fibre products.



### **Yangtze Optical Fibre and Cable Joint Stock Limited Company**

FarBand® Ultra Low Loss G.654.E Fibre For the next generation optical transmission network, lower attenuation or larger effective area of the fibre can help the system meet 3U (Ultra high speed, Ultra





## What is ITU-T G.654 Fiber

ITU-T Recommend G.654 fiber is a cut-off shifted single-mode optical fiber especially used for high bandwidth long distance transmission. The G.654 fiber is a single



## Contact Us

---

For datasheets, pricing, or custom telecom energy solutions, please visit:  
<https://koskolong.co.za>