



**Adam Tas Corridor Energy**

# **Incoming wiring specifications for floor distribution boxes**





## Incoming wiring specifications for floor distribution boxes

---



### Wiring requirements of distribution box

Wiring requirements of distribution box Upper incoming line, lower outgoing line, main circuit on the left, control circuit on the right, horizontal and vertical. The exposed laying can take the sheath line, or

### Understanding Distribution Boxes: A Comprehensive Guide

A distribution box, also known as a power distribution box or electrical distribution box, is used to distribute electrical power safely to multiple



### Distribution Boxes: Types and Functions

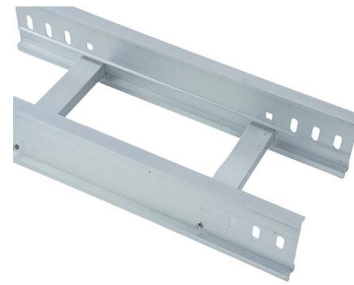
A distribution boxes acts as the load center and main distributor of electrical power within a building. Also called a distribution board, panel board,

### Distribution boards components

Distribution boards (generally only one in residential premises) usually include the meter (s) and in some cases (notably where the supply



utilities impose a TT earthing system and/or tariff



## How to Install a Cable Distribution Box Safely and

Reliable cable distribution boxes ensure safe, efficient power management for residential, commercial, and industrial systems. Learn

## CATALOG Wiring ducts, floor boxes and trunking Easily allows for

The ABB Concept floor boxes offer safety and reliability. Each of the two sides of the floor box can accommodate up to 4 modular wiring units, making it possible to mount a differential



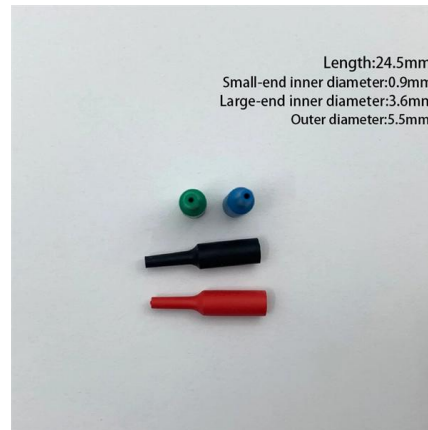
## Flush Floor Boxes: Specifications

Specifications: The floor pocket shall be a wiring device designed for flush mount installation in the stage floor. The floor pocket plate shall be constructed of cast aluminum with non-skid tread pattern and



## TECHNICAL SPECIFICATION FOR OUTDOOR TYPE DISTRIBUTION FEEDER PILLAR BOX

1. Scope: This specification covers technical requirements of design, manufacture, testing at manufacturer's works, packing, forwarding, supply and unloading at store/site and performance of



## technical guidance for developers domestic electricity

domestic electricity If you are experiencing a power cut please call 105

## Floor Box Design and Electrical Floor Outlet

Your one-stop shop for resources and information to design and build floor box specs for new constructions, renovations, and more. Discover all our resources, tools,



## The installation requirements for the distribution box

Learn how to install a distribution box safely and correctly. Covers wiring, placement, standards, and expert tips for a compliant setup.





## Requirements And Specifications For Installation Of



The installation requirements and specifications of Distribution box involve many aspects, including site selection, fixing method, wiring specifications

### IEEE 525-2007\_accepted

IEEE-SA Standards Board Abstract: The design, installation, and protection of wire and cable systems in substations are covered in this guide, with the objective of minimizing cable failures and their



### Technical Specifications for Outdoor LT Distribution boxes with

Scope: The scope of this specification covers Weather / Vermin proof LT distribution boxes (LTD) with controllers, MCCB, MCB, Bus bars, Contactors, CT's, Energy Meter, LT gas filled fixed capacitor, DC

### OUR NEW FLOOR BOXES

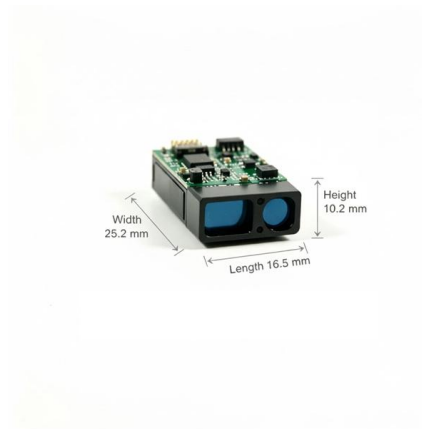
Depending on the box version chosen (standard, flush or round), there are up to 3 possible finishes (plastic, stainless steel or brass) to match the floor covering and give the desired final appearance.





## CATALOG Wiring ducts, floor boxes and trunking Easily allows for

Wiring ducts, floor boxes and trunking Easily allows for organization, pulling and separation of cables deliver the most effective, reliable and long lasting support for your cabling

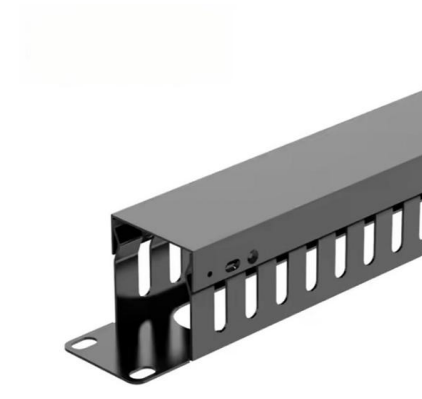


## SAFEHOUSE GUIDE TO DISTRIBUTION BOARDS,

SAFEHOUSE GUIDE TO DISTRIBUTION BOARDS, ISOLATORS AND EARTH LEAKAGE UNITS The distribution board in any building contains

## Zone Distribution System

Distributes all cable conductors to up to three locations (one "IN", three "OUTS") to increase the amount of floor boxes fed from a single Zone Distribution Box output whip.



## Specifying and installing floor boxes

By understanding where and when a floor box is necessary, selecting the right unit for the environment, adhering to standards, applying safe wiring and



## Contact Us

---

For datasheets, pricing, or custom telecom energy solutions, please visit:  
<https://koskolong.co.za>