



Adam Tas Corridor Energy

Indoor Vertical Cable Tray Installation

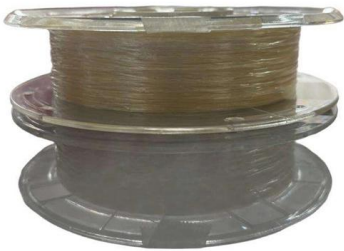




Indoor Vertical Cable Tray Installation

A Guide to Installing and Supporting Electrical Cable Trays

A professional guide to installing electrical cable tray systems per NEC Article 392. Covers support, securing cables, and fill calculations.



Cable Tray and Conduit Installation Method Statement

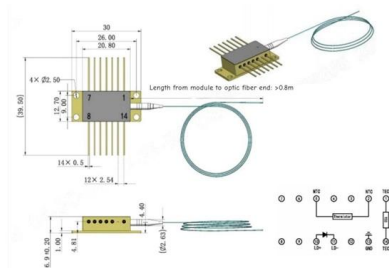
Step-by-step cable tray and conduit installation method with safety, quality and inspection procedures as per IEEE standards.



Mastering Cable Tray Installation , Step-by-Step Guide for a Seamless

Mastering cable tray installation is crucial for creating a safe, organised, and efficient cable management system. By following this step-by-step guide, you can ensure a seamless setup that

Outline drawings
mm



CABLE TRAY

For Cable Tray Installers--This publication is intended as a practical guide for the proper installation of cable tray systems. Cable tray



system design shall comply with NEC Article 392, NEMA VE 1, and



Vertical & Overhead Installation of Cable Trays and Wire Mesh

Yes, wire mesh baskets and cable trays can be installed vertically or overhead, and they absolutely should be in many cabling projects. Whether routing Cat 6 cables in a tight riser space or



GENERAL INFORMATION

In vertical installations, the weight of the suspended cable creates a tensile load on itself and is the factor, from a cable perspective, that limits the height of vertical installation for a tight buffer cable.



Cable tray manual

These documents: ANSI/NEMA VE-1, Metal Cable Tray Systems; NEMA VE-2, Cable Tray Installation Guidelines; and NEMA FG-1, Non Metallic Cable Tray Systems, are an excellent industry resource in





Method Statement installation of Cable Trays and Ladders

The Cable Tray system is installed in electrical rooms, plant rooms, and service corridors. This section will guide you through the necessary steps to



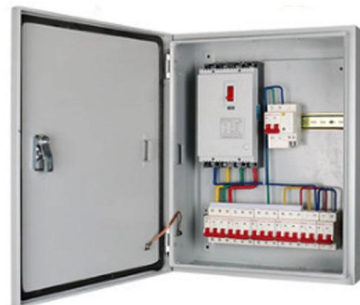
Cable Tray and Reels , Wire and Cable Management

Fast installation with dependable support. Everything you need to build a cable management system, including Cablofil wire mesh cable tray, ladder cable tray,



Best practice guide to cable ladder and cable tray

Cable ladder and cable tray systems The following recommendations are intended to be a practical guide to ensure the safe and proper installation of



Tray Installations

The placement of cables, ducts, and conduits can be done using cable trays - for both outside plant (OSP) and interior spaces (ISP). This allows cables and ducts



Best Practices for Installing Cables in Trays

Learn the best practices for installing cables in trays. This guide covers essential steps, technical requirements, and key details for efficient cable



Mastering Cable Tray Installation , Step-by-Step Guide for a Seamless

Learn how to install cable trays correctly. Get the ultimate step-by-step guide on setting up a seamless and reliable cable management system.

INSTALLATION GUIDE

We have more than a decade's worth of experience making and designing quality cable tray and cable management systems. Our knowledgeable production team works closely with each customer to





Cable Tray Technical Guide A practical guide to product selection and

Cable tray is considered to be a system. It must provide continuous support for cables, and the electrical continuity of the cable tray system must be maintained.

Cable Tray Installation Procedure Guide

This document provides procedures for installing cable trays according to international standards. It describes inspecting and storing cable trays upon



Best Practice Guide to Cable Ladder and Cable Tray Systems

Introduction This publication is intended as a practical guide for the proper and safe* installation of cable ladder systems, cable tray systems, channel support systems and associated supports.

A Guide to Installing and Supporting Electrical Cable Trays

This guide covers the critical steps, from selecting the right electrical cable tray and performing accurate cable fill calculations to managing a safe cable pull through



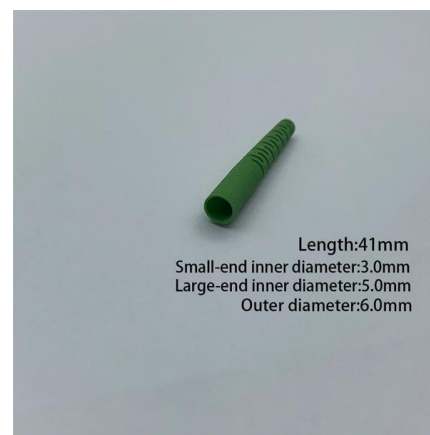


Best Practices for Installing Cables in Trays

Learn the best practices for installing cables in trays. This guide covers essential steps, technical requirements, and key details

What is a Vertical Cable Tray?

What is a vertical cable tray? This guide explains its types (ladder, solid-bottom), benefits for safety & organization, and key applications in data



Cable Tray Installation

Learn everything about cable tray installation with our complete guide. Discover types, steps, and safety tips for efficient electrical cable management.

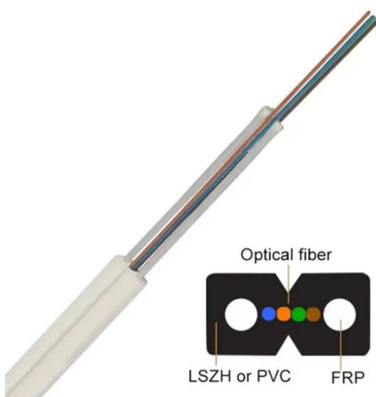
Instrumentation Cable trays Installation in vertical

The above issues can be minimized to a great extent if we can install the instrumentation cable trays in vertical orientation .Although a little bit higher



Cable Tray Installation

Whether you're building a commercial setup or upgrading an industrial plant, proper cable tray installation ensures neat wiring, safe access, and easy maintenance. But before you lay the first tray



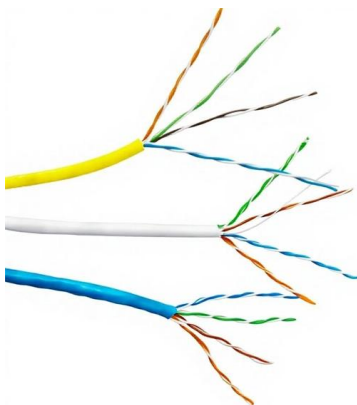
CABLE TRAY INSTITUTE

For vertical installations, the cables may hang away from the cable tray if not tied down. Although this section of the NEC does not require cable tie down in



Cable tray manual

Nearly every aspect of cable tray design and installation has been explored for the use of the reader. If a topic has not been covered sufficiently to answer a specific question or if additional information is





Cable Tray Technical Guide A practical guide to product selection and

A practical guide to product selection and installation This guide for engineers and installers has been developed by ABB as a practical reference regarding cable tray characteristics, installation, and



Contact Us

For datasheets, pricing, or custom telecom energy solutions, please visit:
<https://koskolong.co.za>