



Adam Tas Corridor Energy

Indoor distribution box leakage protection tripped





Indoor distribution box leakage protection tripped



MOLLOM DIN Rail Circuit Breaker Distribution Protection Box

This power distribution protection box can be easily installed and very convenient to use, just need a few steps to mount it on your wall. Widely use, suitable for installation indoors, widely used in homes,

What are the common problems of distribution boxes?

The main problems encountered with distribution boxes include installation and layout problems, electrical connection and grounding problems,



OM3 Fiber Patch Cable Family

RCD tripping: Tripped Circuit Breaker and What to do?

Before jumping into the reasons behind tripped circuit breakers, let's briefly understand how modern electric circuits function. An electrical circuit typically

Earth Leakage Nuisance Tripping

For many years, since we moved into our home, the Earth Leakage Circuit Breaker (ELCB) would trip for no apparent reason. Often, it was difficult



to reset the ELCB after the trip.

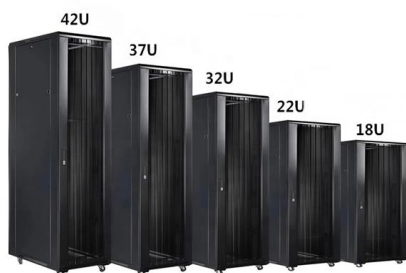
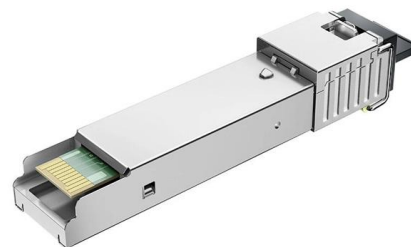


What is the Reason of Earth leakage devices tripping without fault

Some types of electrical and electromagnetic interference caused by the network or its environment may affect the operation of earth leakage protection devices and causes their tripping without existence of

Common troubleshooting of distribution boxes: analysis of causes of

Distribution boxes are the unsung heroes of our electrical systems, quietly managing power until something goes wrong. When they start tripping, overheating, or making strange noises, it's more



Causes of earth leakage protector override trip

The earth leakage protector in the corridor does not trip, and the distribution box or transformer always trips. The first reason is that the design configuration is different The design principle of the



Distribution box manufacturers on how to solve the problem of

The leakage can be large and small, and it is not too big to determine as soon as possible. In order to prevent leakage of the enclosure of the distribution cabinet, the reliable method is to install some



IP65 ABS Transparent Cover Electrical Box, 5 Way

5 Way IP65 ABS Transparent Cover Electrical Box, Waterproof Distribution Protection Box for Circuit Breaker, ABS Power Supply Electronic

Water leaking into Electrical Panel or Fuse Box

A water leak in a property can cause incredible damage to not only the plasterwork, decorative finishes, and floorings but also to the electrical system. In particular,



What Causes an Electrical Distribution Board to Trip?

Discover why your electrical distribution board keeps tripping. Our Cape Town electricians explain common causes, safety tips, and when to call a professional.



Waterproof Distribution Box (IP65-IP68)

IP65 waterproof distribution box for outdoor installs. Plastic ABS/PC, DIN-rail ready, clean wiring, customization available. Manufacturer support & accessories.



What are the situations of small power distribution unit tripping? How

Short circuit: When a direct connection occurs between two conductors in a circuit (usually live and neutral), it causes a short circuit trip.
Leakage: When the current passes through the ground or leaks

Discussion on Leakage Protection in Distribution Network

First of all, the leakage protection is systematically analyzed, then the correct use of leakage protection in distribution network is studied.

EFFICIENT FIELD TERMINATION

1. **PREPARE** - Strip and clean the fiber

2. **INSERT** - Fast and easy insertion

3. **LOCK** - Secure connection achieved

No Polishing | No Epoxy

Eliminates cable excess length and pigtail splice storage. Designed for high-efficiency onsite installation.

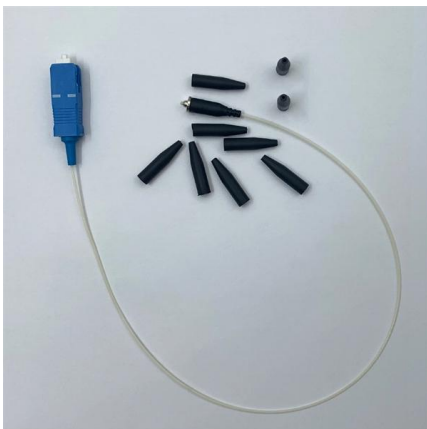


RCD Trip Fix: Understanding And Resolving Electrical Faults

Protect your home and family from electrical hazards. Understand the reasons behind RCD tripping and take steps to ensure electrical safety.

The reasons and solutions caused tripping in the

When you are drying your hair, the electricity tripped, when you are having your dinner, the power is off caused by tripping. There are many reasons



SAFEHOUSE GUIDE TO DISTRIBUTION BOARDS,

When the current flow in a circuit exceeds the rating of the breaker, it will simply trip, cutting off the electricity supply to that circuit, protecting it from

Earth Leakage Breaker Trips .. Where is the problem?

Any current supplied to the ground floor lights from the 1st floor UPS needs to be returned to the first floor neutral bar, not the ground floor neutral bar.



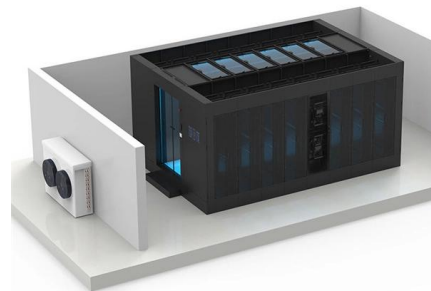
IP65 ABS Distribution Protection Box,12 Way Waterproof Circuit

IP65 ABS Distribution Protection Box,12 Way Waterproof Circuit Breaker Distribution Box 12 DIN Rail Outdoor Distribution Junction Box for Indoor Outdoor Wall Circuit Breake (255 x 200 x 110mm) -



Wet Electrical Panel: 5 Things to Know About a

It's important to know what you're dealing with, so in this article, we'll cover everything from what can happen if an electrical panel gets to how water



Understanding Distribution Boxes: A Comprehensive Guide

A distribution box, also known as a power distribution box or electrical distribution box, is used to distribute electrical power safely to multiple





Distribution Box Guide: Types, Components & Solutions

Understand distribution boxes (DB boxes) in 5 minutes. Learn about types, components, functions, and uses. Find the perfect DB box for your needs.



Troubleshooting a Tripped Circuit Breaker

Effectively troubleshoot a tripped circuit breaker with a methodical and safe approach. For earth leakage issues, identify the faulty components such as the compressor or fan motor, or

Why is there always a switch trip in the home distribution

Any circuit breaker with overload protection function, if the current in a circuit is too large, will trigger the overload protection. So after the first trip, should



smseace Distribution Protection Box, ABS Plastic Transparent Cover

smseace Distribution Protection Box, ABS Plastic Transparent Cover Waterproof Distribution Box IP65, for Indoor Wall Circuit Breaker (8 Way) - Amazon Product name: Distribution protection box



Causes of earth leakage protector override trip

The phenomenon that the leakage protector in the corridor does not trip due to unbalanced three-phase load, and the distribution box or transformer always trips, usually occurs in the new building.

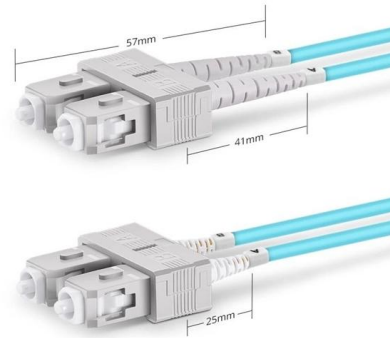


Stay Safe: Your Guide To Distribution Board Safety 2025

Ensure your Distribution board is SANS 10142-1 compliant with circuit breaker checks and earth leakage trips for a safe home.

The reasons and solutions caused tripping in the

Usually, the air switch tripping and leakage switch tripping are the normally tripping, you know, when the electricity accidents happened in the



Duplex SC UPC



Contact Us

For datasheets, pricing, or custom telecom energy solutions, please visit:
<https://koskolong.co.za>