



**Adam Tas Corridor Energy**

# **Inlet Distribution Box Pressure Method**





## Overview

---

The performance of column-style equipment, including distillation columns or tower reactors, significantly depends on how uniformly distributed the gas flow is at the inlet section of the column.



## Inlet Distribution Box Pressure Method

---



### Effect of inlet total pressure non-uniform distribution on aerodynamic

However, the importance of the total pressure non-uniformity has not been appropriately recognized in the literature. This study deals with the influence rule and mechanism of different inlet

## Chapter 8 Drop Spillway

Drop spillway is one of the most commonly used gully control structures. Two significant variants of drop spillways, distinguished based on the inlet, are the straight drop spillway and the box-inlet drop



### Operating inlet pressure head assessment for multi

The operating inlet pressure head,  $H_{OI}$ , is a main hydraulic component for the proper hydraulically efficient design and evaluation of pressure

## Understanding Gas Pressure

Jim Brewer Magic Sweep Corporation This session is intended to help students understand gas pressure in natural gas and propane systems. We



will discuss these topics: units of measure for gas,



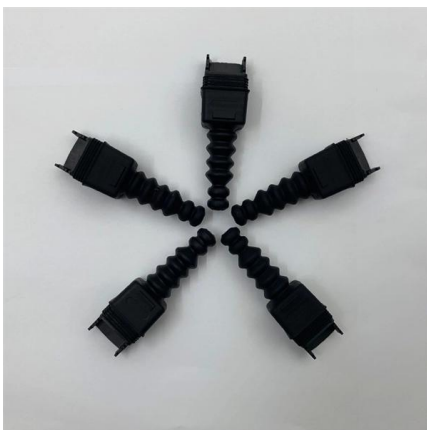
## Pressure Testing New Gas Distribution Lines

Pressure testing gas lines ensures safety and reliability. Learn how technology like the Ralston Instruments FieldLab enhances accuracy and record-keeping.



## Pressure Inlet

Where more accurate pressure measurement is required, transducers based on the force balance principle of Figure 1.14 are generally used. This is essentially a differential pressure transducer, in



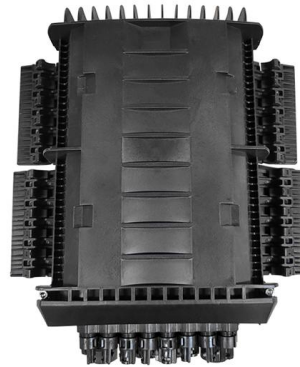
## Examining Pressure Management Methods in Water Distribution

Examining Pressure Management Methods in Water Distribution Systems (Part 2 of 2) White Paper Overview The first paper in this two-part series identified the key pressure management problems



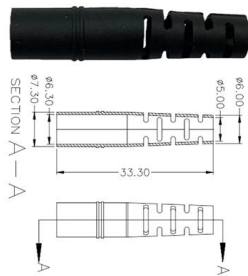
## Improving wastewater optimization through flow distribution

There are a number of ways to distribute flow, including: inlet feed gates, flow distribution box, inlet control valves and hydraulic symmetry. Relying



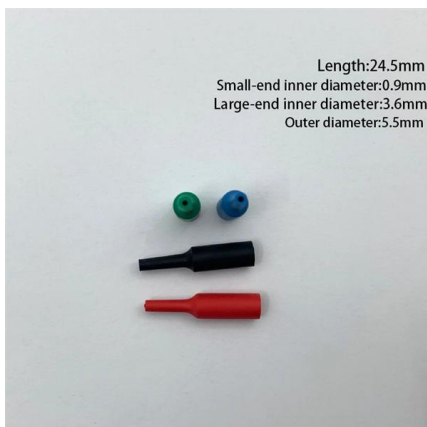
## PACKED TOWER INTERNALS

For high performance packed towers, INTALOX® Packed Tower Systems technology treats the packing and associated internals as a system that works together to provide optimal performance. An



## TWO-PHASE AND THREE-PHASE SEPARATOR DESIGN AND

Higher efficiency can be obtained at pressures above 4825 kPa (ga) by using double pocket vanes. Vanes can tolerate higher liquid load than mesh pads. However, they are sensitive to slugs and



## FEA Analysis For Internal Gas Distributors

This study detailed the mechanical calculations for four internal components designed as gas inlet distributors within a pressure vessel. These



## Full Guide to Understanding Septic Tank Distribution

Troubleshooting methods involve checking the inlet and outlet pipes for blockages, examining the distribution box for structural integrity, and



### US20170087497A1

The present disclosure relates to a device for uniformly distributing liquid and vapor fluid mixtures being introduced into a separation vessel, and to methods for the design and use thereof.

## Separation technologies

This inlet distributor, commonly known as Schoepentoeter, is characterised by a vane structure that makes it suitable for two-phase and three-phase separators in



## ID-164: Steps in Constructing a Pressure Distribution

This publication describes the construction procedure for the installation of a pressure distribution system following the final design approval by the health



## Systems An Introduction to Gas Distribution

A series regulator installed upstream from the primary regulator and set to continuously limit the pressure on the inlet of the primary regulator to the maximum allowable operating pressure of the



## Anomaly Detection and Inlet Pressure Prediction in Water Distribution

1 INTRODUCTION Inlet pressure management is a crucial component of water distribution networks, directly impacting the stability and efficiency of distribution systems. Accurate prediction and control

## Performance Considerations for Fan Inlet Boxes , AirPro Blog

A properly engineered inlet box ensures smooth, even airflow into the fan wheel, minimizing turbulence that can degrade performance and lead to premature wear. One of the most





## HVAC Design Overview of Variable Air Volume Systems

Unfortunately, manufacturers typically only list the static pressure drop which is always lower than the total pressure drop since the velocity at the box inlet is much higher than the outlet velocity, resulting

## Air Distribution Basics and Duct Design

This Strategy Guideline on air distribution basics and duct design for an energy efficient house builds upon the information developed in those two previous guides. Results of the load calculations and

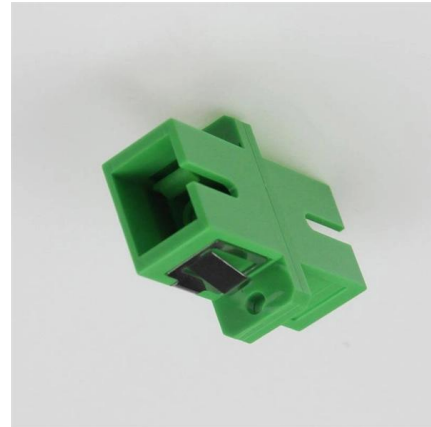


## On-site Sewage System Pressure Distribution Systems

The distribution system consists of small 1- to 2-inch diameter laterals with small discharge orifices. A pressure head is created within the laterals, usually by means of a pump or siphon. Pressure

## Discussion on the working principle of inlet-header of

A new method for design calculation of inlet-header was developed through finding the solution of Baines equation and analyzing the effect of main parameters on the result, particularly the



### Installing D-Boxes - SOWMA

Distribution boxes are constructed with an inlet at the highest elevation and multiple outlets at a single lower elevation. In theory, the box will then distribute the effluent equally between trenches.



### Understanding the GC Inlet. Which one is more appropriate for your

May be easiest approach for active analytes (example: 2,4 dinitrophenol) Using "pulsed mode" may result in peak doublets due to system ramping down at 99 psi/min Instead, use "ramped pressure" or



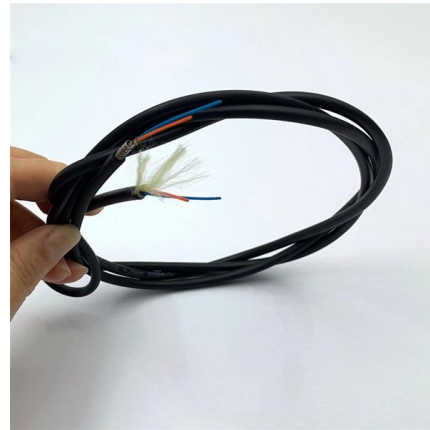
### (PDF) Improvement of Flow Distribution by New Inlet

To solve this issue, we proposed a new inlet header configuration with splitter plates to decrease the flow maldistribution and pressure drop



## Estimation of Gas Pressure Drops for Reactor Inlet

The pressure drops were calculated by modeling each case as gas flow through a perforated plate; specifically, the "dry hole pressure drop" calculation for gas flow



## Gas Distribution Systems (MS-02-486;rev\_C;en-US;Catalog)

Most often built around one or a series of pressure regulation steps, gas distribution systems may have four typical subsystems: source inlet connection, primary gas pressure control, point-of-use, and

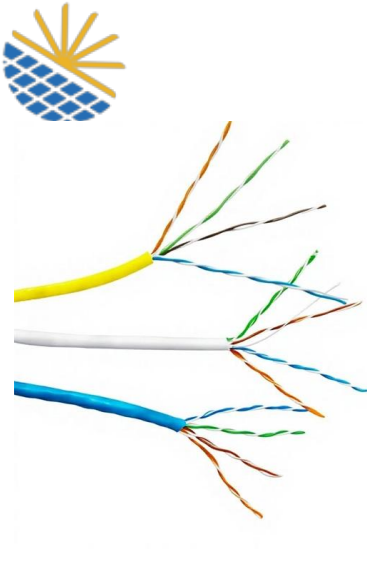
## Flow Distribution

Proper distribution of flow among multiple treatment units allows the system to perform as intended. Typical methods of flow distribution include gravity distribution using symmetrical tee headers,



## Comprehensive Guide to Installing a Septic Distribution Box

Learn how to install a septic distribution box with step-by-step instructions, tips, and essential maintenance advice.



## Contact Us

---

For datasheets, pricing, or custom telecom energy solutions, please visit:  
<https://koskolong.co.za>