



**Adam Tas Corridor Energy**

# **Inspection Report of Aluminum Alloy Cable Management Frame**





## Inspection Report of Aluminum Alloy Cable Management Frame

---



### Ancillary Structures Inspection Reference Manual, November 2021

This Ancillary Structures Inspection Reference Manual addresses inspection and maintenance issues related to a wide range of ancillary highway structures, with a focus on steel and aluminum

### Aluminium Extrusion Inspection Report

This inspection report summarizes quality checks performed on aluminum extrusions from a supplier. It lists parameters like surface finish, alloy, dimensions, defects,



### Aluminium Alloy Quality Control Guide , PDF

The document outlines quality control procedures for aluminum alloy ingots. It discusses inspection of incoming materials, including visual checks, separate

### (PDF) Aluminum alloys for electrical engineering: a review

The inherent features of aluminum, both beneficial and detrimental, for electrical



engineering are emphasized along with alloying concepts that

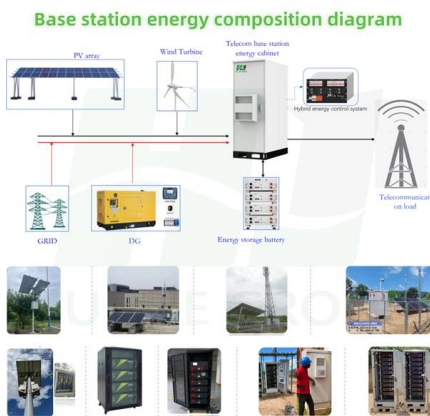


### How to Inspect Aluminum Extrusion Profiles: A

Effective inspection can prevent costly rework, reduce waste, and ensure customer satisfaction. This guide covers the standards, methods, and

### Aluminium alloys as structural material: A review of

Evangelia et al. discussed the reported experimental, numerical, and analytical studies on different structural aluminum alloys, providing a



### ASTM E505-15 Red

Note 1: The set of reference radiographs consists of five 8 1/2 by 11-in. cardboard frames containing radiographs covering discontinuities in aluminum and



## **INTERNATIONAL ISO STANDARD 6362-1**

1 Scope This part of ISO 6362 specifies the technical conditions for inspection and delivery of wrought aluminium and aluminium alloy rods/bars, tubes and profiles for general engineering applications. It



### **SmartView®**

SmartView® is the versatile, modular system for detecting, monitoring and reporting surface defects in products ranging from paper and plastics to steel and aluminium.

### **Aluminum Profile Test Report Summary , PDF , Applied**

This document summarizes test results for aluminum profiles from Fujian Minfa Aluminum Co. It tested the mechanical properties, chemical



### **A Comprehensive Guide to Conducting Inspections of Aluminum**

Conduct comprehensive final product inspections to evaluate the overall quality of the aluminum window and door accessories. Inspect a statistically significant sample size, covering all



## ASI Summary Audit Report Ulsan Aluminum Certificate 159 PS Rev 1

All activities at Ulsan Aluminum Ltd in Ulsan, South Korea, including the manufacture of aluminium and aluminium coil and sheet specifically for automotive, can and specialty products.



## Aluminum Alloy Test Report

Aluminum Alloy Test Report. 5HSRUW 1R  
5HSRUW 'DWH 05 . 6DPSOH 1DPH Aluminum  
alloy. 6XSSOLHU & RPSDQ 9ROWDJH N9 & RXQW  
5DWH 0HDVXUH 7LPH V . & RUUHFV & XUYH

## Aluminum Frame Test Report

Test arrangement is shown in the test schematic diagram. The size of load plate is 400mm x 740mm. The total weight of load plates and beams is 6.3kN. Take an initial deflection measurement when the



## Luxury Aluminum Alloy Square Desk Cable Grommet

Product Description Introduction: BF Desk cable grommet is designed as the cable management equipment for furniture office. Hidden in table mounting to make the

## Aluminum Alloy Cable Management Box Desktop Metal Wire

1. Advanced Material Technology With an aluminum alloy construction, this cable management box ensures high durability and corrosion resistance, perfect for long-lasting use in various environments.



## Aluminum Cables Manufacturing Plant Report: Setup & Cost

The report on aluminum cables manufacturing plant project provides detailed insights into business plan, unit setup, cost, Machinery & requirements.



## Quality Inspection Manual for Aluminum Formwork

The inspection schedules and reporting processes enhance documentation and accountability by requiring frequent checks at key stages, including daily, pre



## Aluminum Door and Window Inspection ITP

This inspection and test plan outlines the inspection criteria and approval process for aluminum door, window, and glazing works on levels from the ground floor to the

## E505

NOTE 1-The set of reference radiographs consists of five 8 1 / 2 by 11-in. cardboard frames containing radiographs covering discontinuities in aluminum and magnesium alloy die



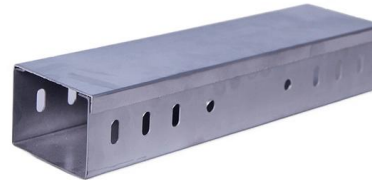


## **BS EN 485-1:2016**

Up-to-date lists and bibliographical references concerning such national standards may be obtained on application to the CEN-CENELEC Management Centre or to any CEN member. This European

## **Non-Ferrous Aluminum , SGS**

We offer sampling, sample preparation, testing and inspections services for the complete value chain - from impurity testing of bauxite, the geological and most commonly traded form, to quality and



## **STI-398-4-3**

1.1 All testing apparatus shall be periodically checked and calibrated and records of such checks/calibration shall be maintained. 2.0 TEST RECORDS: All records of tests and inspection

## **Quality Control Measures with Aluminum Door Frame Profiles**

Material Quality Assurance Raw Material Inspection The first step in quality control involves inspecting the raw materials used in the production of aluminum door frame profiles. The



## **ASTM International , ASTM**

Over 13,000 ASTM standards operate globally. Defined and set by us, they improve the lives of millions every day. ASTM provides the standards and solutions you

## **ISO 6362-1:2022**

Technical conditions for inspection and delivery  
Aluminium et alliages d'aluminium corroyés --  
Barres, tubes et profilés filés -- Partie 1:  
Conditions techniques de contrôle et de livraison  
Reference 6362



## **Contact Us**

---

For datasheets, pricing, or custom telecom energy solutions, please visit:  
<https://koskolong.co.za>