





## Installation Method for Galvanized Cable Tray Base

---

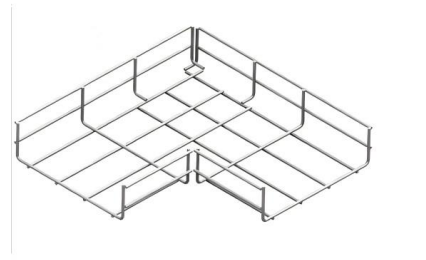


### Metal Cable Tray Installation Guidelines , Cable Tray Institute

The Cable Tray Institute is making available the current edition of this practical guide for the proper installation of aluminum or steel cable tray systems. These guidelines will be useful to engineers,

### GUIDE CABLE TRAYS TECHNICAL

If it has excellent electrical continuity and is integrated in the installation's equipotential bonding system, a metal cable tray reduces the coupling's impact and thus contributes to good EMC of the electrical



### Inside the World of Cable Tray Manufacturing

The cable tray manufacturer provides load tables based on standardized testing that considers both the allowable tray deflection and the maximum stress in the material. Environmental factors such as

### Cable Tray Technical Guide A practical guide to product selection and

The choice of method should be discussed with a



local inspector. The best decision may be to extend only the cables, creating a discontinuity in the cable tray.



### Cable tray manual

These documents: ANSI/NEMA VE-1, Metal Cable Tray Systems; NEMA VE-2, Cable Tray Installation Guidelines; and NEMA FG-1, Non Metallic Cable Tray Systems, are an excellent industry resource in

### CABLE TRAYS GENERAL INFORMATION AND

Cable tray systems are to be installed so they are accessible. If possible 300mm minimum should be left above or between installed systems to allow for cable



### Method Statement installation of Cable Trays and Ladders

This method statement covers the site installation of the cable tray & ladders and the requirements of checks to be carried out.



## Galvanized Steel Cable Tray Market Size, Growth

The galvanized steel cable tray market is experiencing steady growth driven by the increasing demand for reliable and durable cable management solutions in



### Product Catalog

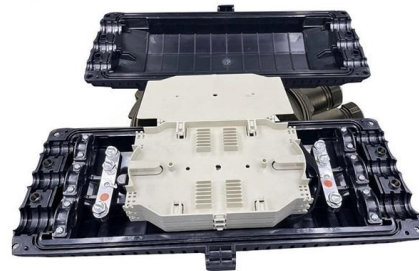


## Best Practice Guide to Cable Ladder and Cable Tray Systems

This publication is intended as a practical guide for the proper and safe\* installation of cable ladder systems, cable tray systems, channel support systems and associated supports.

## Guide to cable support systems

Widths of 8 and 15 millimetres enable flexible adjustment to different cable trays, cable ladders and cable volumes. With the help of the matching SBV tightening strap locks and 576 spring chuck, the



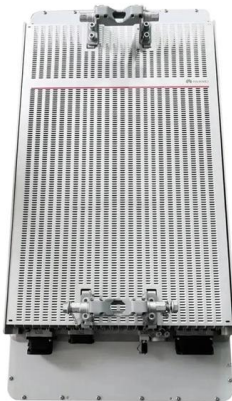
## How to Choose Galvanized Cable Tray You need to know

Learn how to choose the right galvanized cable tray for safe, efficient cable management: compliance, load capacity, and installation tips.



## Installation of Cable Tray, Trunking And Accessories

2. Purpose This method statement for the Installation of Cable Tray, Trunking, and Accessories shows and explains the procedure must be followed to install the cable tray and



## Master Cable Tray Installation: A Professional Step-by

Learn how to install cable trays for large-scale projects with our professional, step-by-step guide covering industry standards, safety protocols,

## Galvanized cable trays in Kenya , Hubtech Nairobi Kenya

Galvanized cable trays in Kenya brings out a stylish finish when it comes to structured cabling as they create a path in a building. Shop Now!





## Technical Specification for Cable tray installation and cable laying work



Scope :- This specification covers the following major activities; - Fabrication and installation of Mild Steel (MS) support structure for Galvanized Iron (GI) Cable tray.

### Guide to cable support systems

Universal systems for cable support structures are used for small loads. The systems are suspended from the ceiling with threaded rods, stand-off brackets allow raised floor mounting of cable trays,



### CABLE TRAY SYSTEMS GUIDE

The galvanized wire then welded and formed into the appropriate basket tray size. Hubbell's pre-galvanized finish performs the same as the post-zinc plated production finish while avoiding

### Best Practice Guide to Cable Ladder and Cable Tray Systems

Introduction This publication is intended as a practical guide for the proper and safe\* installation of cable ladder systems, cable tray systems, channel support systems and associated supports.



## A Guide to Installing and Supporting Electrical Cable Trays

A professional guide to installing electrical cable tray systems per NEC Article 392. Covers support, securing cables, and fill calculations.



## Cable tray manual

Nearly every aspect of cable tray design and installation has been explored for the use of the reader. If a topic has not been covered sufficiently to answer a specific question or if additional information is



## Cable Tray Installation Method Statement

This document provides a method statement for installing cable trays and trunking systems for building electrical services.





## Cable Tray Installation

Learn everything about cable tray installation with our complete guide. Discover types, steps, and safety tips for efficient electrical cable management.



## CABLE TRAY SYSTEMS GUIDE

Some applications may require the cable tray to support the weight of a single, dead object in addition to the cable loads. Specifications typically require this to be applied at the midpoint of the span between

## Cable Tray Technical Guide A practical guide to product selection and

A practical guide to product selection and installation This guide for engineers and installers has been developed by ABB as a practical reference regarding cable tray characteristics, installation, and



## Contact Us

---

For datasheets, pricing, or custom telecom energy solutions, please visit:  
<https://koskolong.co.za>