



**Adam Tas Corridor Energy**

# **Installation Method of Explosion-proof Distribution Box Handle**





## Installation Method of Explosion-proof Distribution Box Handle

---



### Principles for Connecting Explosion-Proof Distribution

Explosion-proof systems, especially in hazardous environments, demand a meticulous approach to ensure safety and compliance with regulations. This

### Explosion Proof Distribution box-

Explosion Proof Distribution box is applicable to explosive gas mixture Hazardous locations: Zone 1, Zone 2, Zone 20, Zone 21, Zone 22;explosive gas mixture: II A, II B, II C level;the temperature



### D118 Flowmeter With Explosion-proof Distribution Box for Petrochemical

D118 Wall Mount Type Ultrasonic Flow Meter. HRMD Series Explosion-proof Distribution Boxes. For Petrochemical, Liquid Blending Systems, Single pot granulator, Oil and derivatives, Explosion-proof

### What are the principles of connecting explosion proof distribution

What are the principles of connecting explosion-



proof distribution boxes with galvanized pipes? 7 principles of connecting explosion-proof distribution box with galvanized pipe: 1 The requirements for



### IF 1665

This can either be achieved by a second installer holding the cover or by utilizing a hoist. If a hoist is to be used, first remove all the cover bolts and locate the 5/8-11 threaded holes.

## Installation Atlas of Explosion-Proof Distribution Box

Understanding the installation of explosion-proof distribution boxes is crucial for ensuring electrical safety in factories.



### Explosion proof distribution box standards and installation issues

Switch terminals should be matched with the wire cross-section; wiring after component installation should be neatly arranged and tied into a bundle with nylon tape to be fastened behind the board.





## Explosion-Proof Electrical Distribution Boxes: Applications in

An explosion-proof distribution box is a specialized enclosure designed to contain internal explosions and prevent the escape of flames, sparks, or hot gases. It is essential to note that these boxes are



## Full Guide on Explosion-Proof Distribution Panel

Explosion-proof distribution panels are vital components in hazardous industrial environments, ensuring safety by preventing electrical equipment from igniting

## Requirements And Specifications For Installation Of

The installation of explosion-proof distribution boxes should follow specific explosion-proof grades and material requirements to ensure their safety



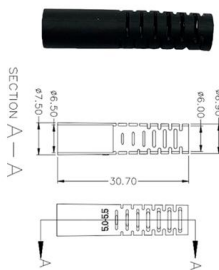
## 5 Key Factors to Consider When Selecting Explosion Proof Distribution Boxes

Selecting explosion-proof distribution boxes protects the safety of your staff in any potentially hazardous workplace. HEXLON stands out as a trusted provider of explosion-proof



## Explosion-Proof Distribution Boxes: Special Installation Requirements

Seven workers vanished after a deafening blast tore through a California fireworks facility last July - a chilling reminder of why explosion-proof electrical equipment installation isn't just regulation, it's life



## How to Install Explosion-Proof Distribution Box

Install the box in a location with a lower risk of danger, away from collision risks, heat sources, and as much as possible, in a corrosion and

## Explosion Proof Distribution Box & Electrical Enclosures

Durable Hexlon Explosion Proof Distribution Boxes and Electrical Enclosures, IECEx and ATEX certified for Zone 1 and Zone 2.





## Explosion proof Power Distribution Panel Box

Power Distribution panel box - Hazardous locations for explosive gas mixtures: Zone 1 and Zone 2. Explosive gas mixtures: Class IIA, IIB, and IIC.

## Precautions for installation of explosion proof power distribution box

The distribution box and switch box shall be installed firmly and upright. The mobile distribution box and switch box shall be installed on the solid support.



## Explosion Proof Enclosure Comprehensive Guide

Explosion-Proof Distribution box: These smaller components are structurally similar to distribution cabinets. You can use these for the distribution



## Main Installation Methods of Explosion-Proof Lighting

Explosion-proof lighting distribution boxes typically employ one of the following three installation methods: 1) wall-mounted surface installation; 2) floor

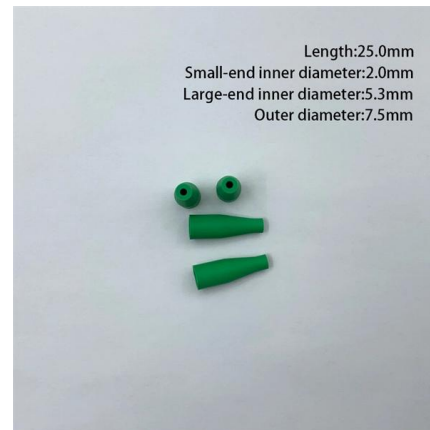


## Installation and Wiring of High and Low Voltage Explosion-Proof

Generally, professional electricians should handle the wiring of explosion-proof distribution boxes, as they possess the necessary skills and safety equipment. In non-urgent cases,

### Explosion

The circuit breaker using metal handle with frozen-resistant and can be equipped with a padlock. The enclosures can be combined and installed to meet the various requirements of power distribution



## Installation & Maintenance Instructions Junction Box Enclosures FM,

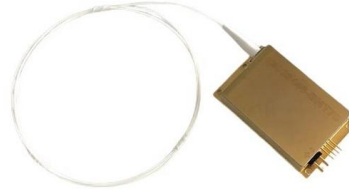


GENERAL: Observe all cautions for installation and use of CCS pressure, temperature sensors contained on the CCS catalog B declaration. Follow all applicable federal, state government or



## Installation Guide Explosion

When assembly, operation and maintenance, the operator must follow the requirements of the IEC 60079-14: latest version Explosive atmosphere-Part 14: Electrical installation design, selection and

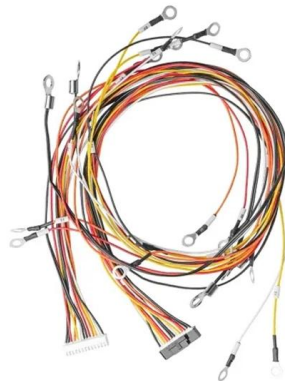


## Ex Local Control Stations & Distribution Boxes

Manufacture custom made Local Control Stations & Distribution Boxes, local control panel boards and stations, explosion protected control units, distribution

### PXK

Type pz:Zone2,Zone 21 and Zone 22 Explosion-proof type:pxIIC, pz IIC, pD IIC. Protection type:ventilation type,compensation type. Structure type:Box



## Precautions for installation of explosion proof power distribution box

3. Explosion proof distribution box and switch box shall be installed in ventilated, dry and normal temperature places. It is strictly forbidden to install it in the gas, smoke, steam, liquid and



## Explosion-Proof Distribution Box , Product Center

Explosion-proof distribution boxes are designed to safely control and distribute electrical power in hazardous environments, preventing ignition risks.

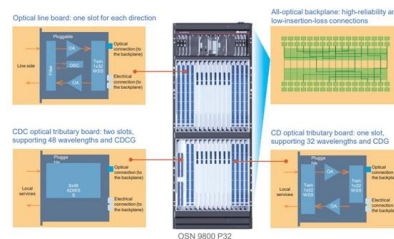


## HLDP03-Series Explosion-proof Distribution Boxes Exporter China

[Home](#) >> [Products](#) >> [Explosion Proof Electric Apparatus](#) >> [HLDP03-Series Explosion-proof Distribution Boxes](#)

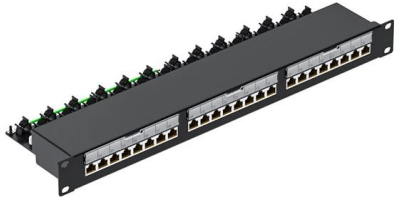
## Explosion Proof Junction Box Types, Prices

Learn about explosion proof junction boxes--pricing, sizes, certifications, and installation tips for electricians and engineers. Shop certified





## Requirements And Specifications For Installation Of



A leakage protector should be installed in the distribution box to provide additional safety protection. Installation requirements in special

## Contact Us

---

For datasheets, pricing, or custom telecom energy solutions, please visit:  
<https://koskolong.co.za>