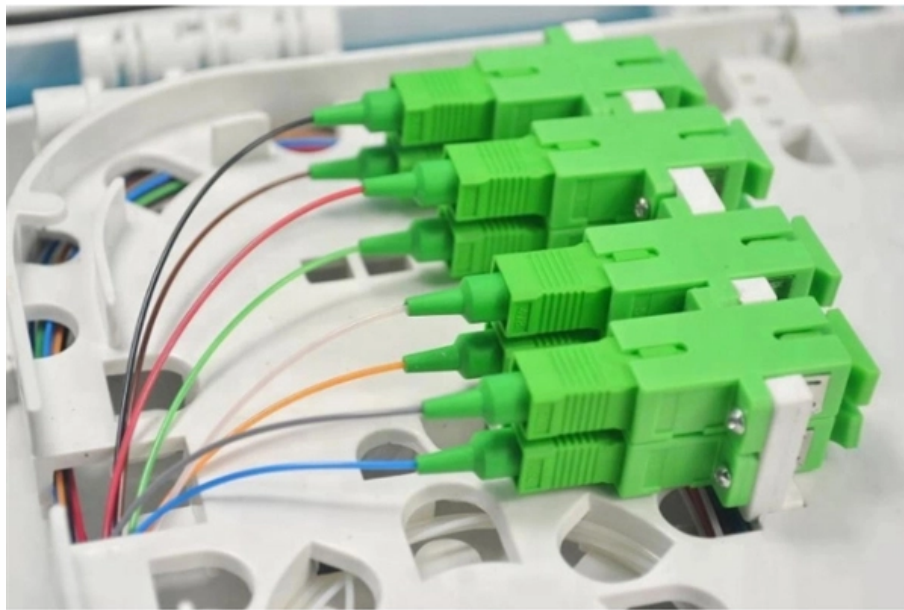




Adam Tas Corridor Energy

Installation Method of Sandwich-Type Cable Trays





Installation Method of Sandwich-Type Cable Trays



Cable Tray Trunking & Ladder Installation Method for

Resources For Electrical & Electronic Engineers
Cable Tray Trunking & Ladder Installation Method for Projects
The purpose of this article is to define the

Instrumentation Cable Tray Installation Checklist and

Step-by-step instrumentation cable tray installation guide with safety tips, standards, inspections, and downloadable Excel checklist.

Pre-Terminated Patch Panel

- Multi-application support
- Flexible configuration
- Modular design



Cable Gland Plug
28mm Cable Gland Plug



MPO-12 up to 96 cores
MPO direct connection 48 ports



Mounting Bracket
Semi-open mounting holes

INSTALLATION GUIDE

The ladder tray system must be complete before the cable/conductors are installed. The ladder tray system must be free of any hazards, which will interfere with the cable's install.



Cable Tray Installation Procedure Guide

This document provides procedures for installing cable trays according to international standards.



It describes inspecting and storing cable trays upon



CABLE TRAYS GENERAL INFORMATION AND

Cable tray systems are to be installed so they are accessible. If possible 300mm minimum should be left above or between installed systems to allow for cable

Mastering Medium Duty Cable Tray Installation: A DIY Guide for

Explore our comprehensive DIY guide on installing medium-duty cable trays effortlessly. Enhance cable organization in your space with step-by-step instructions, safety tips, and



Best Practice Guide to Cable Ladder and Cable Tray Systems

This publication is intended as a practical guide for the proper and safe* installation of cable ladder systems, cable tray systems, channel support systems and associated supports.



Cable Tray Technical Guide A practical guide to product selection and

The choice of method should be discussed with a local inspector. The best decision may be to extend only the cables, creating a discontinuity in the cable tray.



Cable Tray Installation 211215 , PPTX

- The materials cable trays can be made from, including steel, aluminum, and fiber reinforced plastic. - The steps for installing cable trays, which include marking,



Safely Installing, Maintaining and Inspecting Cable Trays

Review the proper methods for safely installing, maintaining and inspecting electrical cable trays; Provide information regarding the hazards of overloaded cable trays;



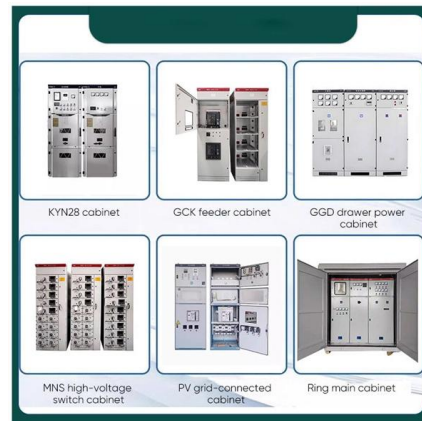
METHOD STATEMENT FOR CABLE TRAY AND

This procedure to clear the method of the supply, installations Cable Tray and Trunking System for the project.



Types of Cable Trays & Installation Guide

Cable trays are crucial in cable management, providing organized electrical and communication wiring pathways. They are available in various materials and configurations to suit industrial, commercial,



Cable Tray and Conduit Installation Method Statement

Step-by-step cable tray and conduit installation method with safety, quality and inspection procedures as per IEEE standards.

Cable Tray Technical Guide A practical guide to product selection and

A practical guide to product selection and installation This guide for engineers and installers has been developed by ABB as a practical reference regarding cable tray characteristics, installation, and





Cable Tray Installation Guide

In this helpful guide, we break down the importance of cable trays and how to manage installation in a few simple steps.

Cable Tray Installation Method Statement , PDF

This document outlines the method statement for the installation of cable trays, including the scope of work, management structure, and detailed installation



Types of Cable Trays - Advantages, Applications and Sizes

Explore the types of cable trays, their advantages, applications, and standard sizes. Learn how they improve cable management and support various industries.



Best Practices for Installing Cables in Trays

Learn the best practices for installing cables in trays. This guide covers essential steps, technical requirements, and key details for efficient cable



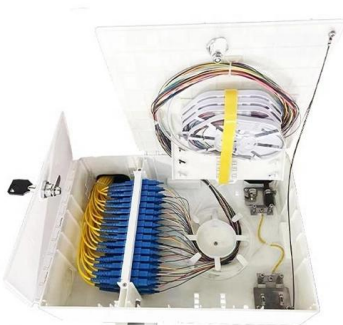
100+ Essential Questions Answered About Cable Trays:

Discover over 100 expert answers about cable trays, covering key topics like material selection, load capacity, installation methods, and maintenance.



Installations of Cable Trays Method Statement - Your

Cable trays are easy to install, and since they come in different sizes, you can choose the right tray for your individual needs. But to install them properly on-site,



Connecting Cable Trays: Your Guide to Secure and

Learn common methods for connecting cable trays safely and efficiently. Our guide covers splice plates, quick-connects, and key tips for secure



Cable Tray Installation

Whether you're building a commercial setup or upgrading an industrial plant, proper cable tray installation ensures neat wiring, safe access, and easy maintenance. But before you lay the first tray



Method Statement for Installation of Cable Tray or Trunking

On completion of cable tray/ ladder installation including fittings, inspect exposed finish. Remove burrs & construction debris and repair damages finishes

Method Statement installation of Cable Trays and Ladders

This method statement covers the site installation of the cable tray & ladders and the requirements of checks to be carried out.



Technical Specification for Cable tray installation and cable laying work

1. Scope :- This specification covers the following major activities; - Fabrication and installation of Mild Steel (MS) support structure for Galvanized Iron (GI) Cable tray. - Installation of perforated GI Cable



A guide to Cable Tray Sizes, Types and Types of Trunking

Ladder tray is mostly used for underground cables. Various types of tray fittings joint, bend, elbow, riser and reducer are used in the tray installation



Guide to cable support systems

A cable support system consists of cable support lengths and system components, such as cable support fittings, support elements, mounting elements and system accessories. The cable support

Contact Us

For datasheets, pricing, or custom telecom energy solutions, please visit:
<https://koskolong.co.za>