



**Adam Tas Corridor Energy**

# **Installation Standards for Cable Trays and Sewage Pipes**





## Overview

---

This standard ensures safety, durability, and performance across various environments. It is the first joint effort of NEMA and CSA International to put in one place standards for metal trays per both NEMA and CSA methods. Cable trays play a vital role in supporting electrical cables and wires in commercial, industrial, and utility installations. The Cable Tray ng standards, performance standards, test standards and application in this document have been tested extensively by competent professional engineers completely installed, without damage either to conductors or. This publication is intended as a practical guide for the proper and safe\* installation of cable ladder systems, cable tray systems, channel support systems and associated supports.



## Installation Standards for Cable Trays and Sewage Pipes

---



### **Cable Tray Technical Guide A practical guide to product selection and**

This guide for engineers and installers has been developed by ABB as a practical reference regarding cable tray characteristics, installation, and requirements.

### **Instrumentation Cable Tray Installation Checklist and**

Step-by-step instrumentation cable tray installation guide with safety tips, standards, inspections, and downloadable Excel checklist.



### **NEC Article 392: Cable Tray Systems**

This document describes regulations for cable trays from the National Electrical Code. It defines cable trays and their components. It provides rules for

### **A Guide to Installing and Supporting Electrical Cable Trays**

A professional guide to installing electrical cable tray systems per NEC Article 392. Covers



support, securing cables, and fill calculations.

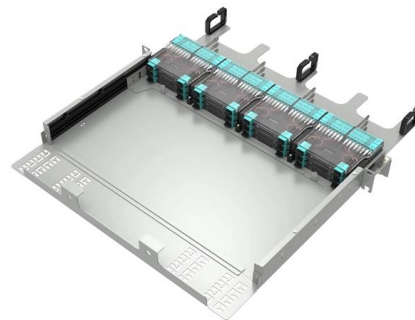


## Best Practices for Installing Cables in Trays

Learn the best practices for installing cables in trays. This guide covers essential steps, technical requirements, and key details

## CABLE TRAYS GENERAL INFORMATION AND

General information of K?raç Metal Cable Trays and installation guide are arranged in accordance with IEC 61537 standards and this document has been prepared for



## GUIDE CABLE TRAYS TECHNICAL

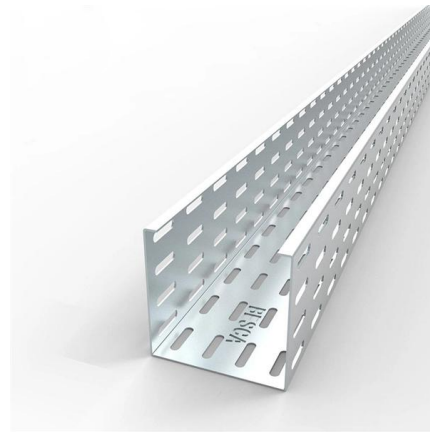
Specifies requirements for metal cable trays and associated fittings designed for use in accordance with the rules of Canadian Electrical Code, Part I and the National Electrical Code®





## METHOD STATEMENT FOR CABLE TRAY INSTALLATION

7.1.7 Install necessary fabricated supports for cable tray as per installation detail. All permanent materials (including fabricated supports), consumables, construction area and resources shall be

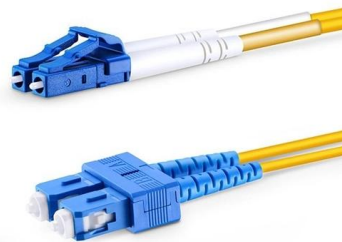


## Installations , Cable Tray Institute

The Cable Tray Institute (CTI) was founded in 1991 to support the cable tray industry by engaging in research, development, education, and the dissemination of

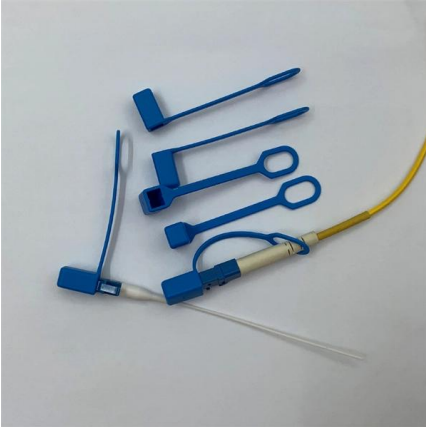
## LEGRAND CABLE TRAYS TECHNICAL GUIDE

Specifies requirements for metal cable trays and associated fittings designed for use in accordance with the rules of Canadian Electrical Code, Part I and the National Electrical Code®



## Technical Specification for Cable tray installation and cable laying work

1. Scope :- This specification covers the following major activities; - Fabrication and installation of Mild Steel (MS) support structure for Galvanized Iron (GI) Cable tray. - Installation of perforated GI Cable



## Cable Tray Technical Guide A practical guide to product selection and

A practical guide to product selection and installation This guide for engineers and installers has been developed by ABB as a practical reference regarding cable tray characteristics, installation, and

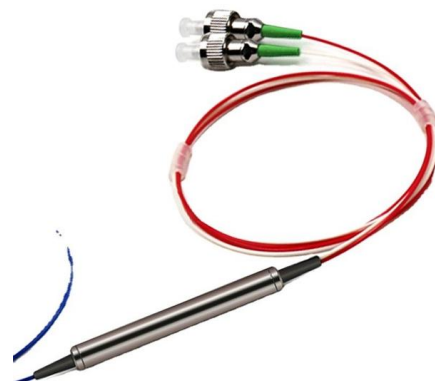


## CABLE TRAY

For Cable Tray Installers--This publication is intended as a practical guide for the proper installation of cable tray systems. Cable tray systems design shall comply with NEC Article 392, NEMA VE 1, and

## IEC Standard for Cable Tray: Complete Technical Guide

For proper installation, design, and maintenance, adherence to international standards is essential. One of the most recognized frameworks





## Method Statement for Cable Tray Installation

NEMA VE-2 - Cable Tray Installation Guidelines  
IEC 61537 - Cable Management - Cable Tray Systems and Cable Ladder System. 5  
AUTHORITIES AND RESPONSIBILITIES Site Manager

## Technical Guidelines for Cable Tray Installation and

Cable tray installation must comply with specific technical standards to ensure electrical safety, system reliability, and long-term maintainability. This document



## Best Practice Guide to Cable Ladder and Cable Tray Systems

This publication is intended as a practical guide for the proper and safe\* installation of cable ladder systems, cable tray systems, channel support systems and associated supports.

## Codes and Standards , Cable Tray Institute

The Cable Tray Institute is making available the current edition of this practical guide for the proper installation of aluminum or steel cable tray systems. These guidelines will be useful to engineers,



## ITER Cabling Handbook

This document deals with cables trays, cables and connector installation and segregation, cable trays earthing and E.M.C. directives. These rules shall be applied in the cabling engineering workflow for



## Cable Tray Installation Procedure Guide

The document outlines the procedure for installing cable trays, including essential tools, equipment, and safety measures. It emphasizes the importance of thorough



## Installation of Cable Tray, Trunking And Accessories

2. Purpose This method statement for the Installation of Cable Tray, Trunking, and Accessories shows and explains the procedure must be followed to install the cable tray and



## Cable Tray and Conduit Installation Method Statement

Step-by-step cable tray and conduit installation method with safety, quality and inspection procedures as per IEEE standards.



## NEC Standards for Cable Trays: Grounding, Fill Capacity

This article provides a comprehensive framework that governs various aspects of cable tray installations, including the types of cables that are deemed acceptable for use, requirements for

## Cable Trays and Accesories

Cable Trays and Accessories are designed to meet most requeriments of cable and electrical wire installations and comply to local international standards of



## Method Statement for the Installation of Cable Tray, Trunking, and

PREPARATION AND SUBMISSIONS BEFORE CABLE TRAY INSTALLATION All materials intended for cable tray, ladder and trunking shall be submitted for approval of the consultant as per the



## Instrument Cable Tray Installation Guide

This document provides guidance on installing instrument cables, cable trays, and conduits. It defines cable trays and explains common tray types. Standards for



## Contact Us

---

For datasheets, pricing, or custom telecom energy solutions, please visit:  
<https://koskolong.co.za>