



Adam Tas Corridor Energy

Installation effect of outdoor power distribution box





Overview

This installation provides convenient and regulated power access for various outdoor equipment, bypassing the need for long, exposed extension cords. The centralized hub ensures that exterior electrical loads are managed and protected by dedicated circuit breakers. ☐☐ Quick Answer: An outdoor electrical junction box is a weatherproof enclosure where electrical wires connect or split, required by code to protect connections from moisture, provide safe access for maintenance, and prevent electrical hazards in exterior applications. Designed for exterior use, it often features pre-wired receptacles directly on the enclosure. An outdoor breaker box is essential for managing electrical power distribution in outdoor settings, ensuring the safe and efficient operation of your electrical systems.



Installation effect of outdoor power distribution box



How To Safely Install an Outdoor Electrical Box for Your

Tip: If installing a junction box for power tools, choose a metal conduit for added durability. How Much Does It Cost to Put in an Outdoor Electrical Box? The cost

Understanding Distribution Boxes:A Comprehensive Guide

A distribution boxes is an essential device that manages the safe and efficient flow of electrical power throughout different areas of a building or facility.



Outdoor junction box: best practices guide

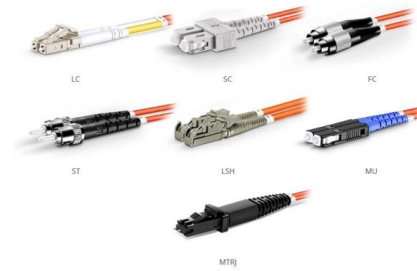
Neglecting proper installation can lead to costly repairs, water damage, electrical hazards, and even fire. This comprehensive guide details best practices for selecting, installing, and maintaining outdoor

Outdoor Electrical Junction Box: Types & NEC Code Requirements 2025

Whether you're planning to add outdoor outlets,



installing solar panels, or upgrading your home's exterior lighting, understanding outdoor electrical junction boxes is essential. The wrong box



OM1 Fiber Patch Cable Family



A Comprehensive Guide to electric box outside Installation and

Post-Installation Checks and Setup Once the installation is complete, performing thorough inspections and tests ensures that the electric box functions as intended and adheres to safety standards.

Safe Outdoor Electrical Panel Installation Guide

Learn how to complete a safe, code-compliant Outdoor Electrical Panel Installation with the right tools, PPE, and Linkewell's weatherproof power



Busbar

In electric power distribution, a busbar (also bus bar) is a metallic strip or bar, typically housed inside switchgear, panel boards, and busway enclosures for



Outdoor Breaker Box: Essential Considerations for Safe

Choosing the right outdoor breaker box can enhance safety and efficiency. The right box will not only accommodate your power needs but also



Outdoor Power Distribution Boxes: The Backbone of

Recent trends show a surge in outdoor installations due to the growing need for dependable electrical distribution in unpredictable

How to Install an Outdoor Breaker Box With Outlets

Guide to installing a safe, protected outdoor breaker box. Covers weather ratings, critical GFCI features, and placement rules.



Understanding Power Distribution Boxes: Types, Features, and

Temporary Power Distribution Box: These portable boxes are essential for construction sites and outdoor events, providing a reliable power source where permanent installations are not



Outdoor Electrical Outlet Installation Without the

Outdoor outlet safety guide Outdoor Electrical Outlet Installation Without the Extension-Cord
Circus Adding power outside is a smart upgrade for patios,



WORLD WIDE WEB JOURNAL Home

O'Reilly & Associates, Inc. 103A Morris St.
Sebastopol, CA United States

How we solve Outdoor Power Distribution

Outdoor venue Power Distribution Solutions. PDU boxes for distributing outdoor power safely and effectively.





The Complete Guide to Distribution Box: Installation, Types & More

Blog The Complete Guide to Distribution Box: Installation, Types & More By Admin Aug 2, 2025
No Comments # distribution box Introduction
Electrical systems power our homes, offices, and

How to Install a Distribution Box--A Comprehensive

Before starting the installation, finding a proper place for putting the distribution box is crucial, because it largely decides the safety and convenience



Weatherproof Outdoor Distribution Boxes: Key Design Insights

Learn the key design points for weatherproof outdoor distribution boxes to ensure durability, safety, and compliance in challenging environments !

How to Add an Outdoor Electrical Box (DIY) , Family

Add an outdoor electrical box to get power to where you need it, especially for holiday lights. Do it safely and easily.



Understanding Outdoor Power Distribution Box: A

In this comprehensive guide, we'll explore what outdoor power distribution boxes are, their key features, applications, and why they are essential



How to Install a Distribution Box--A Comprehensive

Whether you are an electrical contractor or a construction brigade, knowing how to properly and safely install distribution boxes is the basis of



How to confirm whether the installation location of the

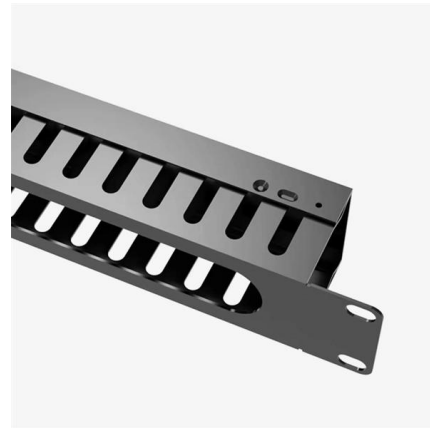
The electrical distribution box plays a vital role in the power system. It is responsible for distributing electricity to various circuits and equipment.





Size determination, installation method and wiring mode

The distribution box is the central hub of the home circuit and the general control of our daily power consumption. It is an indispensable electrical equipment. If there



Contact Us

For datasheets, pricing, or custom telecom energy solutions, please visit:
<https://koskolong.co.za>