



Adam Tas Corridor Energy

Installation height of distribution box control switch





Overview

The proper installation of a distribution box involves placing it at the right height to ensure safety and convenience. According to the "Code for Acceptance of Construction Quality of Building Electrical Engineering" GB50303-2002, the vertical distance between the bottom surface of the fixed stainless steel enclosure ip67 and the ground should be greater than 1. Both sources stipulate that socket outlets, switches and controls should be installed at a height between 450mm and 1200mm above the finished floor level. generally, this means it is a minimum of 450mm to the underside of an outlet and a maximum of 1200mm to the top of a switch or a control. VISUAL DEVICE NOT LESS THAN 90" TO TOP OR 6" BELOW CEILING, WHICH EVER IS HIGHER. Ensure safe placement: install in dry, accessible areas with good ventilation and at appropriate height (typically ~1).



Installation height of distribution box control switch

Standard Heights for Electrical Switches



This document provides standard heights for various electrical switch boards and fittings in different rooms of a house. It lists the ideal heights in millimeters from

Standard Outlet & Switch Height: NEC Code Guide

Standard outlet height is 12-18" from the floor; light switches at 48-50". NEC code rules for residential and ADA-compliant installations.



What is the Ideal Installation Height for a Distribution Box

The proper installation of a distribution box involves placing it at the right height to ensure safety and convenience. Mounting it 4.5 to 5.5 feet (1.4 to 1.7 meters) high

Key Points Of Distribution Box Installation

3. Distribution box and switch box shall be



installed in ventilated, dry and normal temperature places. It is strictly prohibited to install it in the gas, flue gas, steam, liquid and other harmful media with severe



Heights of Electrical Equipment in Dwellings

Section 1.18 of Approved Document M, which applies to new dwellings, includes the objective of assisting people whose reach is limited to use

Installation requirements for distribution boxes

Installation of closed or explosion-proof electrical facilities; distribution box electrical components, meters, switches and lines should be arranged neatly, firmly installed, easy to operate.



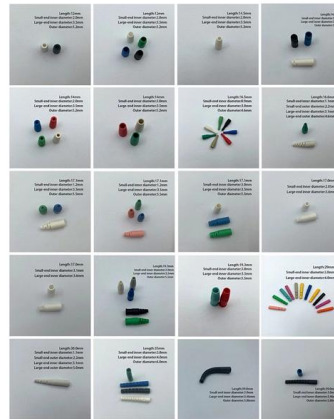
News

Uniformity in Height In spaces where multiple distribution cabinets or boxes are installed, maintaining a uniform installation height is crucial. This promotes a coordinated look across the area and enhances



The installation requirements for the distribution box

In homes, the best height for installation is about 1.5 meters from the floor -- it's easy to reach and out of children's reach. In industrial settings, you



What is the Ideal Installation Height for a Distribution Box

Install a distribution box at 4.5 to 5.5 feet high for safety, accessibility, and compliance. This height ensures easy use and protection from hazards.

The Complete Guide to NEC Essentials for Architects

Safety Switches The term "disconnect switch" is often used to designate an enclosed switch used for disconnecting a load. The official name is a safety switch. Safety switches are used to provide a local



Standard Outlet & Switch Height: NEC Code Guide

For a typical residential installation, the standard electrical outlet height is 12 to 16 inches from the finished floor to the bottom of the device box. The common light



Standard Heights for Electrical Switches

It lists the ideal heights in millimeters from the floor level for items like main switch

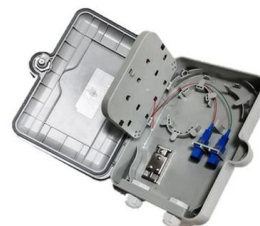


Electrical Mounting Heights in Dwellings: Pocket Guide

Pocket guide on electrical equipment mounting heights in dwellings, compliant with BS 7671 & Building Regulations. Accessibility & safety tips included.

Key Points Of Installation And Collocation Of Distribution Box In

The inlets and outlets of the mobile distribution box and switch box shall not be connected with pins Rubber insulated cable must be used for the mouth line and exit line. 8. The distribution box and





How to Improve the Installation Quality of Distribution Boxes

Learn key methods to enhance distribution box installation quality, including location, height, wiring, and safety compliance.

Installation Height And Location Selection Requirements For Ground

The distance between the distribution box and the switch box should not exceed 30 meters, and the horizontal distance between the switch box and the fixed electrical equipment it controls should not



Embedded Installation Of Distribution Box

According to the installation size of wall mounted (surface mounted) terminal combination electrical appliances, first drill bolt holes or embedded wood bricks, then open the upper cover of the

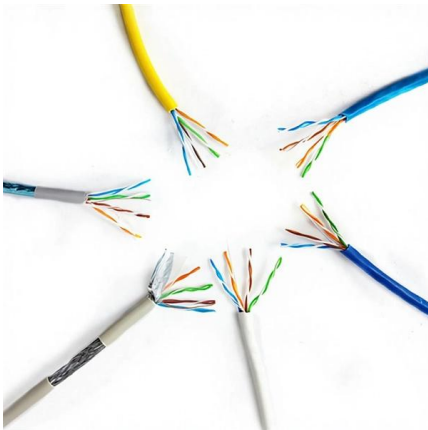
Standard Heights for Electrical Installations

The document provides guidelines for mounting heights for electrical switch sockets, light switches, and MCB distribution boards. It specifies the heights for different



Distribution Box Installation: A Complete Guide to Safe

The distribution box, often referred to as a breaker box, fuse box, or electrical panel, is a critical component of any electrical system. It acts as the central hub for



Electrical Switch Height Requirements

NEC Switch Height Regulations The National Electrical Code (NEC) specifies home wiring requirements, but when it comes to standard light switch



MOUNTING HEIGHTS FOR ELECTRICAL DEVICES ELECTRICAL

CONTRACTOR SHALL PROVIDE PULL BOXES, JUNCTION BOXES, SPLICE BOXES AND FITTINGS WHERE NECESSARY OR REQUIRED BY THE NEC. CONDUIT ROUTING SHOWN





The height requirement of distribution box

For the concealed distribution box in the wall, the wooden box larger than the distribution box shall be used to reserve holes. When installing the distribution box, the wooden box must be



Requirements And Specifications For Installation Of

Installation height and fixing method?: The bottom edge of the distribution box is usually between 1.5 meters and 1.8 meters above the ground,

IEC / BS 7671 Codes for Consumer Unit and Distribution

Residential: The recommended height for distribution board and consumer unit is between 1 metre to 1.8 metre from the floor. The suggested height is 1.3 metres



2013 48 Autumn Wiring Matters

Existing dwellings in existing dwellings, switches and controls are generally higher and outlets lower than the mounting heights required by Building regulations.



Contact Us

For datasheets, pricing, or custom telecom energy solutions, please visit:
<https://koskolong.co.za>