



Adam Tas Corridor Energy

Installation of Austrian Main Distribution Box





Installation of Austrian Main Distribution Box



Electric Panel Installation Method Statement

METHOD STATEMENT FOR Electric panel and distribution box installation and termination - Free download as PDF File (.pdf), Text File (.txt) or read online for

How to Install a Distribution Box--A Comprehensive

Before starting the installation, finding a proper place for putting the distribution box is crucial, because it largely decides the safety and convenience

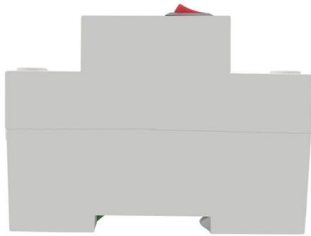
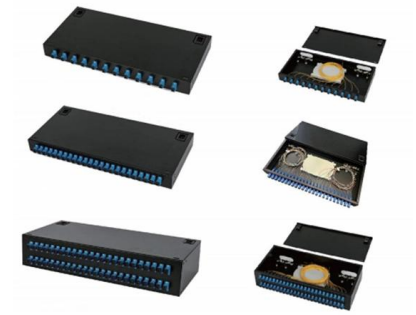


Small distribution box installation steps

The steps to install a small distribution box include selecting a suitable location, installing the base, placing the distribution box, connecting the

Distribution Box Guide: Types, Components & Solutions

Understand distribution boxes (DB boxes) in 5 minutes. Learn about types, components, functions, and uses. Find the perfect DB box for

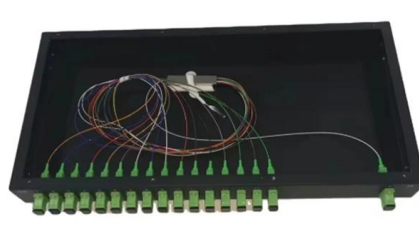


How to Wire a Home Distribution Box

Welcome to our channel! In this video, we'll walk you through the process of wiring a home distribution box with a detailed connection diagram.

Electrical Installation Guide

The Electrical Installation Guide as a wiki! This Electrical Installation Wiki is a collaborative platform, brought to you by Schneider Electric: our experts are continuously improving



How to Choose a House Distribution Box , CHINT global

A well-chosen distribution box ensures the safety and efficiency of your household electrical system. This article guides you through selecting a



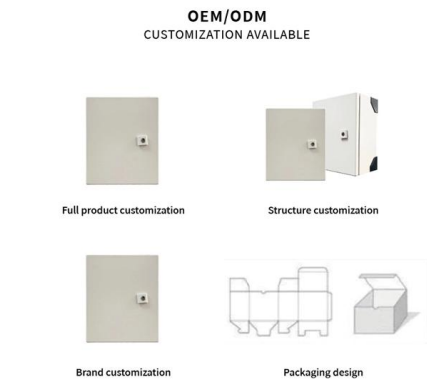
Electrical Distribution Boxes for Power Distribution , Wieland

Unlike conventional installation, you can lay the lines first and install the distribution box at a later time. The robust sheet steel housing protects the sensitive electronic built-in devices even in a harsh



How to Install a Cable Distribution Box Safely and

In modern electrical systems, cable distribution boxes (also known as electrical distribution boxes or distribution boxes) play a crucial role as the key



International-electrical-standards-regulations

Switches, sockets, etc., should be installed in a flush or surface mounted box or in an especially designed trunking system. All the accessories have to be screw fitted.



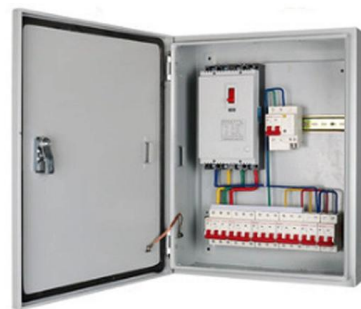
WASIR - WA Service and Installation Requirements

Foreword Welcome to this Sixth edition 3rd revision of the WA Distribution Connections Manual, now known as the Western Australian Service and Installation Requirements (WASIR).



Grid connection

To maintain the technical safety of the transmission grid of Austrian Power Grid AG (APG), connections to APG's grid are only permissible in compliance with the officially approved General Grid Conditions



Temporary Power Distribution Boxes for Electrical

Temporary power distribution boxes for flexible electrical installation. Robust solutions for construction sites, events and temporary energy infrastructure.

The installation requirements for the distribution box

Introduction
Understanding The Components of A Distribution Box
Selecting The Right Distribution Box
Site Preparation and Location
Requirements
Electrical Connections and Wiring
Compliance with Standards and Regulations
Conclusion
Proper installation of a distribution box isn't just a technical requirement. It's a vital step in ensuring the





safety and efficiency of your entire electrical system. Following best practices reduces the risk of electrical fires, power outages, and other hazards, protecting your property and keeping everyone safe. If you're looking for a reliable, See more on eabel Published: Feb 7, 2025Steinbacher Energie

Meter distributor grid Upper Austria overview - Steinbacher Energie

Surcharges f. outdoor installationvert. Flush-mounted/surface-mounted, steel leaf, powder-coated. IP30. Base sheet steel, RAL 7035 powder-coated. Clearance for plinth mounting, aluminium, pulvebe.



Requirements And Specifications For Installation Of

In flammable and explosive environments, explosion-proof distribution boxes should be selected and explosion-proof treatment should be carried out.

Power grid Austria

To enable electricity to be used in homes and businesses, it first needs to be transformed, i.e. converted, to a lower voltage level and then supplied to grid



Distribution box

Yet the distribution box is a highly complex component that not only ensures safe power

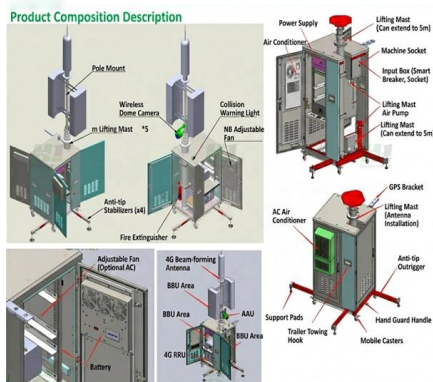


distribution, but is also responsible for protection in an emergency. In this article, you will learn everything you need



Main Distribution Board (MDB): The Backbone of Safe

Learn what a Main Distribution Board (MDB) is, how it works, its key components, types, and why it's vital for safe, reliable power distribution in any



Distribution Automation Handbook

3.14 Primary Distribution Substations A primary distribution substation is the connection point of a distribution system to a trans-mission or a sub-transmission network. Outgoing feeders from a

WA Electrical Requirements

Consumer Installation: An assembly of electrical wiring, components and equipment downstream from the point of supply, excluding network operator's metering equipment, and includes all types of



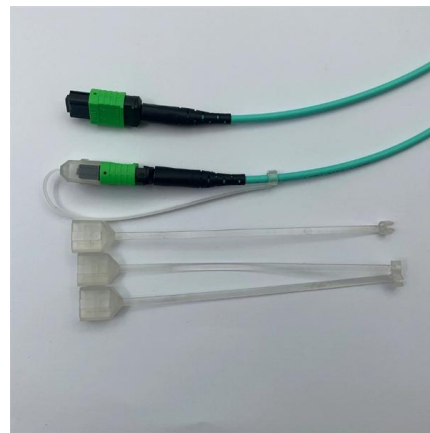


Distribution switchboards

Distribution switchboards, including the Main LV Switchboard (MLVS), are critical to the dependability of an electrical installation. They must comply with well-defined standards governing

Microsoft Word

Foreword Welcome to this Sixth edition 3rd revision of the WA Distribution Connections Manual, now known as the Western Australian Service and Installation Requirements (WASIR).



Contact Us

For datasheets, pricing, or custom telecom energy solutions, please visit:
<https://koskolong.co.za>