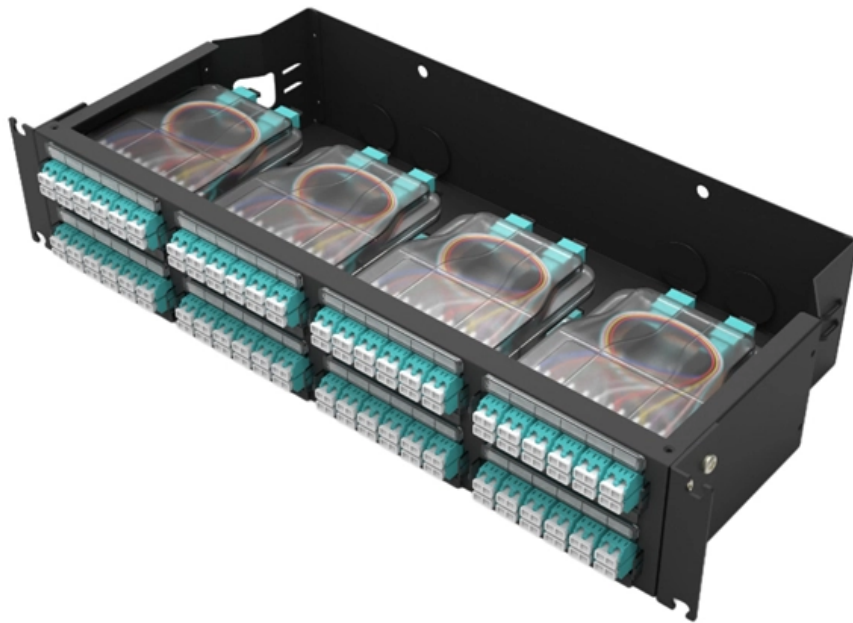




**Adam Tas Corridor Energy**

# **Installation of Rainproof Cable Tray Base**





## Installation of Rainproof Cable Tray Base

---



### Guide to cable support systems

Widths of 8 and 15 millimetres enable flexible adjustment to different cable trays, cable ladders and cable volumes. With the help of the matching SBV tightening strap locks and 576 spring chuck, the

### Technical Guidelines for Cable Tray Installation and

1. Route Planning and Layout Principles  
Coordinate with Building Structure: Cable tray routing should align with architectural design, avoiding unnecessary



### Cable Tray Installation and Maintenance Considerations

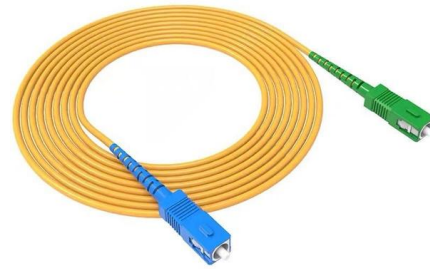
Learn about effective Cable Tray Installation and Maintenance. Get practical tips for planning, fitting, and looking after your cable trays.

### Best practice guide to cable ladder and cable tray

Cable ladder and cable tray systems The following recommendations are intended to be a



practical guide to ensure the safe and proper installation of

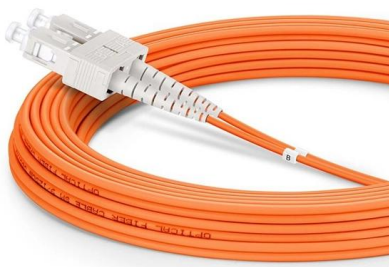


### **100+ Essential Questions Answered About Cable Trays:**

Cable trays, as an important component of modern building electrical systems, play a crucial role in supporting and protecting cable lines, ensuring

### **GUIDE CABLE TRAYS TECHNICAL**

If it has excellent electrical continuity and is integrated in the installation's equipotential bonding system, a metal cable tray reduces the coupling's impact and thus contributes to good EMC of the electrical



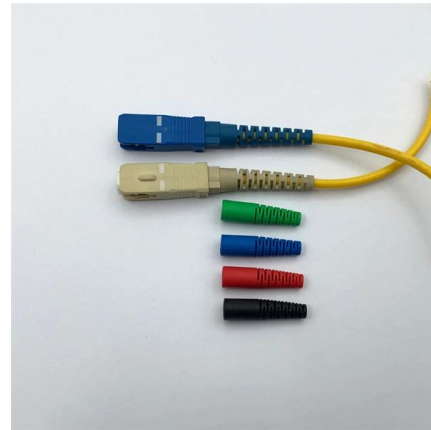
### **Metal Cable Tray Installation Guidelines , Cable Tray Institute**

The Cable Tray Institute is making available the current edition of this practical guide for the proper installation of aluminum or steel cable tray systems. These guidelines will be useful to engineers,



## **Cable Tray Technical Guide A practical guide to product selection and**

A practical guide to product selection and installation This guide for engineers and installers has been developed by ABB as a practical reference regarding cable tray characteristics, installation, and



## **Mastering Cable Tray Installation , Step-by-Step Guide for a Seamless**

Mastering cable tray installation is crucial for creating a safe, organised, and efficient cable management system. By following this step-by-step guide, you can ensure a seamless setup that



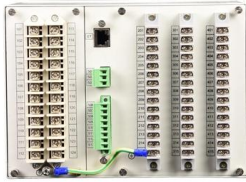
## **Cable Tray Installation Method Statement**

This document provides a method statement for installing cable trays and trunking systems for building electrical services.



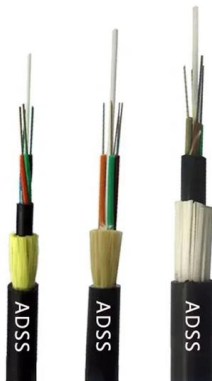
## **Technical Guidelines for Cable Tray Installation and**

Cable tray installation must comply with specific technical standards to ensure electrical safety, system reliability, and long-term maintainability. This document



## How to Install Cable Tray: A Comprehensive Guide to Different Cable

Welcome to our step-by-step guide on installing cable trays! In this video, we'll explore the different types of cable trays available and provide detailed instructions for their installation.

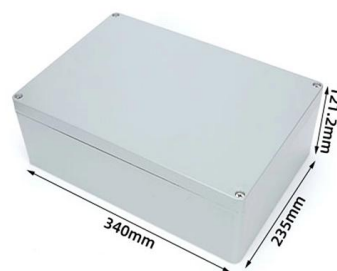


## DIY Installation: Mastering Light Duty Cable Tray Setup

Explore our comprehensive DIY guide to master the installation of light-duty cable trays. From planning to cable organization, follow step-by-step instructions for a tidy and efficient cable

## Best Practices for Installing Cables in Trays

Learn the best practices for installing cables in trays. This guide covers essential steps, technical requirements, and key details





## Mastering Cable Tray Installation , Step-by-Step Guide for a Seamless

Learn how to install cable trays correctly. Get the ultimate step-by-step guide on setting up a seamless and reliable cable management system.

### Essential Steps for Cable Tray Installation on Roof

Learn essential steps for cable tray installation on roof, including support systems, material selection, and environmental considerations for optimal



### Best Practice Guide to Cable Ladder and Cable Tray Systems

These guidelines will be particularly useful for the design, specification, procurement, installation and maintenance of these systems. Cable ladder systems and cable tray systems are designed for use

### Cable Tray Installation

Whether you're building a commercial setup or upgrading an industrial plant, proper cable tray installation ensures neat wiring, safe access, and easy maintenance. But before you lay the first tray





## **A Guide to Installing and Supporting Electrical Cable Trays**



This guide covers the critical steps, from selecting the right electrical cable tray and performing accurate cable fill calculations to managing a safe cable pull through

### **Cable Tray and Conduit Installation Method Statement**

Step-by-step cable tray and conduit installation method with safety, quality and inspection procedures as per IEEE standards.



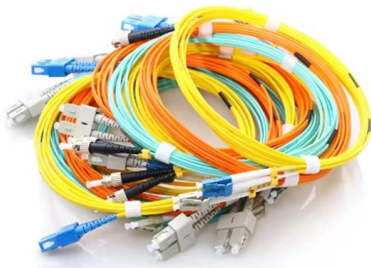
### **Cable Tray Technical Guide A practical guide to product selection and**

Cable tray length is selected based on the load to be supported, the distance between the supports (also referred to as the span), and handling and installation constraints.



### **Method Statement for Installation of Cable Tray or Trunking**

On completion of cable tray/ ladder installation including fittings, inspect exposed finish. Remove burrs & construction debris and repair damages finishes



## Method Statement installation of Cable Trays and Ladders

This method statement covers the site installation of the cable tray & ladders and the requirements of checks to be carried out.

## Contact Us

---

For datasheets, pricing, or custom telecom energy solutions, please visit:  
<https://koskolong.co.za>