



**Adam Tas Corridor Energy**

# **Installation of Short Plate Base for Grid Cable Tray**

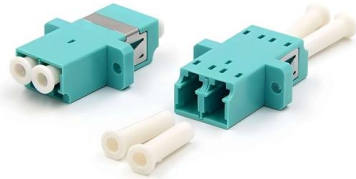




## Installation of Short Plate Base for Grid Cable Tray

---

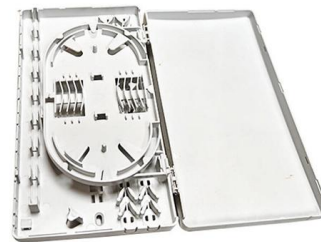
### How to Install Cable Tray: A Comprehensive Guide to Different Cable



Welcome to our step-by-step guide on installing cable trays! In this video, we'll explore the different types of cable trays available and provide detailed instructions for their installation.

### Best Practice Guide to Cable Ladder and Cable Tray Systems

This publication is intended as a practical guide for the proper and safe\* installation of cable ladder systems, cable tray systems, channel support systems and associated supports.



PRODUCTION NAME	Frequency conversion control cabinet
PROTECTION DEGREE	IP55
VOLTAGE	220/380V
SIZE	customized as required
MOUNTING WAY	Floor-standing
APPLICATION	Indoor and outdoor

### Cable Tray

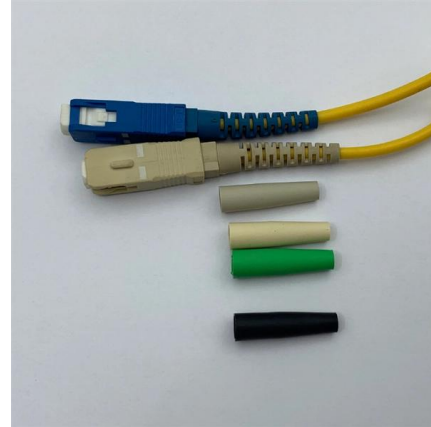
With the RS 60 cable tray installation system, we offer you the last installation type of the standard support construction, so that you can implement all installations

### Best practice guide to cable ladder and cable tray

Cable ladder and cable tray systems The following recommendations are intended to be a



practical guide to ensure the safe and proper installation of



### Master Cable Tray Installation: A Professional Step-by

Learn how to install cable trays for large-scale projects with our professional, step-by-step guide covering industry standards, safety protocols,



### Practices for grounding and bonding of cable trays

Metallic Cable Trays Cable tray may be used as the Equipment Grounding Conductor (EGC) in any installation where qualified persons will



### Installation of Cable Tray, Trunking And Accessories

2. Purpose This method statement for the Installation of Cable Tray, Trunking, and Accessories shows and explains the procedure must be followed to install the cable tray and



## Guide to cable support systems

Widths of 8 and 15 millimetres enable flexible adjustment to different cable trays, cable ladders and cable volumes. With the help of the matching SBV tightening strap locks and 576 spring chuck, the



## CABLE TRAYS GENERAL INFORMATION AND

Cable tray systems are to be installed so they are accessible. If possible 300mm minimum should be left above or between installed systems to allow for cable

## Understanding Cable Tray Grounding: A

Cable tray grounding is an indispensable aspect of electrical installations that plays a pivotal role in ensuring safety, reliability, and efficiency. It



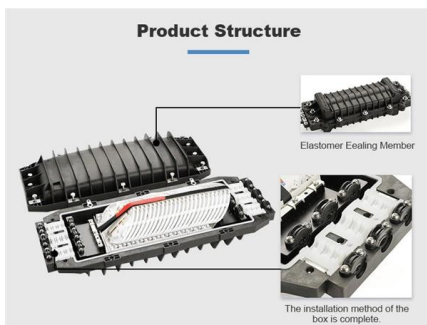
## B-Line series Cable Tray Design Considerations

By incorporating Eaton's support recommendations with straight sections, cable tray fittings, vertical adjustable splice plates and heavy duty expansion splice plates, B-Line series cable ladder solutions



## A Guide to Installing and Supporting Electrical Cable Trays

This guide covers the critical steps, from selecting the right electrical cable tray and performing accurate cable fill calculations to managing a safe cable pull through



## A Guide to Installing and Supporting Electrical Cable Trays

A professional guide to installing electrical cable tray systems per NEC Article 392. Covers support, securing cables, and fill calculations.

## Cable Tray Installation Guidelines , PDF , Galvanization

This document provides details on installing cable trays and their support systems. It includes diagrams showing how to mount cable trays on walls using pre





## Guide to cable support systems

The mesh cable trays are suitable for the installation of power cables and cables in various areas of application. The grid spacings mean that cables can be inserted and run out in various directions.



## Metal Cable Tray Installation Guidelines , Cable Tray Institute

The Cable Tray Institute is making available the current edition of this practical guide for the proper installation of aluminum or steel cable tray systems. These guidelines will be useful to engineers,



## Cable Tray Installation

Whether you're building a commercial setup or upgrading an industrial plant, proper cable tray installation ensures neat wiring, safe access, and easy maintenance. But before you lay the first tray

### Product Catalog



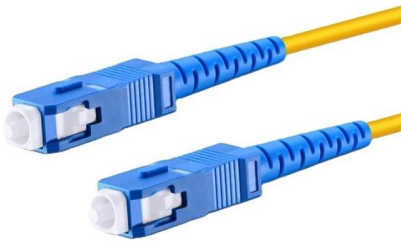
## Cable Tray Installation Method Statement

Make the holes and fix the cable tray supports with appropriate metal plugs, mounting brackets with base plates and nuts, 'L' angles / slotted 'C' channels and



### **Mesh cable tray systems**

4 1 Product description OBO mesh cable tray systems stand out through their high load capacity and good ventilation. They can be used universally. The mesh cable trays are suitable for the installation



### **GUIDE CABLE TRAYS TECHNICAL**

If it has excellent electrical continuity and is integrated in the installation's equipotential bonding system, a metal cable tray reduces the coupling's impact and thus contributes to good EMC of the electrical



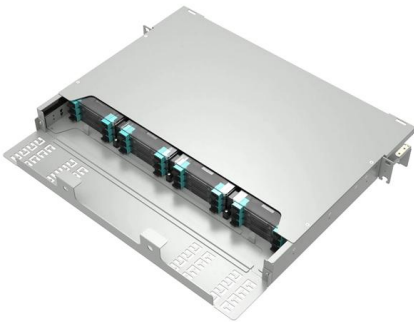
### **Anixter - Wire and Cable, Networking, Security and Utility Power**

Anixter - Wire and Cable, Networking, Security and Utility Power Solutions



## CABLE TRAY SYSTEMS GUIDE

The total load supported by the cable tray, uniformly distributed. This will be the combined weight of all of the cables or tray contents, any environmental loads (snow, ice, dust) and any concentrated static



## Best Practice Guide to Cable Ladder and Cable Tray Systems

Introduction This publication is intended as a practical guide for the proper and safe\* installation of cable ladder systems, cable tray systems, channel support systems and associated supports.

### 5-INCH COLOR TOUCHSCREEN

Intuitive operation, easily accessible with just one touch



## Cable tray manual

These documents: ANSI/NEMA VE-1, Metal Cable Tray Systems; NEMA VE-2, Cable Tray Installation Guidelines; and NEMA FG-1, Non Metallic Cable Tray Systems, are an excellent industry resource in



## IEEE 525-2007\_accepted

IEEE-SA Standards Board Abstract: The design, installation, and protection of wire and cable systems in substations are covered in this guide, with the objective of minimizing cable failures and their



## Cable Tray Technical Guide A practical guide to product selection and

Cable tray length is selected based on the load to be supported, the distance between the supports (also referred to as the span), and handling and installation constraints.



## Cable Tray Installation and Cable Handling Method

Efficient cable tray installation and proper cable handling are critical for ensuring the reliability and safety of electrical systems. Adherence to these guidelines is

## Connecting Cable Trays: Your Guide to Secure and

Learn common methods for connecting cable trays safely and efficiently. Our guide covers splice plates, quick-connects, and key tips for secure





## Contact Us

---

For datasheets, pricing, or custom telecom energy solutions, please visit:  
<https://koskolong.co.za>