



Adam Tas Corridor Energy

Installation of Temporary Electrical Distribution Boxes in Taiwan Buildings





Installation of Temporary Electrical Distribution Boxes in Taiwan Bu



Distribution Box Guide: Types, Components & Solutions

Understand distribution boxes (DB boxes) in 5 minutes. Learn about types, components, functions, and uses. Find the perfect DB box for your needs.

Building Construction Industry Guideline

Preface The Australian/New Zealand Standard AS/NZS 3012: Electrical installations - Construction and demolition sites (AS/NZS 3012) is referenced in Work Health and Safety (WHS) legislation. As part of



Essential Guidelines for Safe Temporary Electrical

Regulatory Frameworks Governing Temporary Electrical Installations Understanding the regulatory frameworks governing temporary electrical installations is vital to

Temporary Power Distribution and Industrial Lighting

Get reliable temporary power distribution and construction lighting solutions for your worksite



needs with our portable power boxes, panels, and LED work lights.



Temporary electrical wiring for construction sites

NEC Article 305 -- "Temporary Wiring" had cable (Type NM) is designed for dry locations. It should not be used wh re exposed to moisture either indoors or outdoors. For outdoor use and indoors in damp



Temporary Power Regulations in Construction , PDF

It reviews regulations around equipment approval, ground-fault protection, wiring methods, boxes and fittings, panelboards, lockout/tagout procedures, and



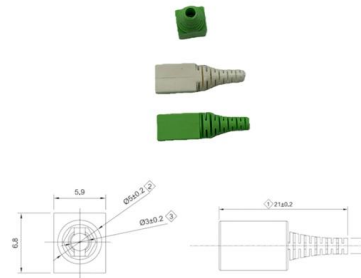
How To Maximize Worksite Safety When Using Power Distribution Boxes

Power distribution boxes are a perfect and safe option. Temporary power distribution is an essential but potentially dangerous aspect of most jobs. Temporary electrical power is utilized in



Best Practices for Installing Temporary Electrical Systems on

Temporary electrical systems for construction are essential, not just for operational efficiency but also for safety. This blog post explores the risks when these systems are absent and shares best practices

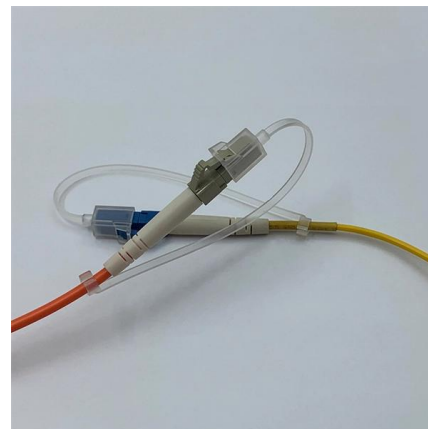


The installation requirements for the distribution box

A distribution box is the heart of any electrical system. It takes the incoming power and safely distributes it to different circuits throughout your

Temporary Electrics for Construction Sites , WysePower

Our comprehensive range of temporary power solutions will get your site up and running in no time at all. We design on-site service systems to ensure you have



Standard for Installing and Maintaining Temporary Electric Power at

Only qualified persons familiar with the construction and operation of temporary electrical power systems should perform the work described in this publication.



Temporary Power Safety Solutions

While the requirements for safely distributing power at construction sites, street fairs, carnivals, convention centers, and the like attempt to mimic those for permanent



Step-by-Step Guide: Temporary Construction Site Power

Looking for temporary power for your construction site? Let us walk you through the process to ensure you don't miss any important steps.

Understanding NFPA 70, Article 590: Temporary Electrical Installations

The NFPA 70, also known as the National Electrical Code (NEC), is a comprehensive set of electrical standards and guidelines aimed at ensuring electrical safety across various installations.



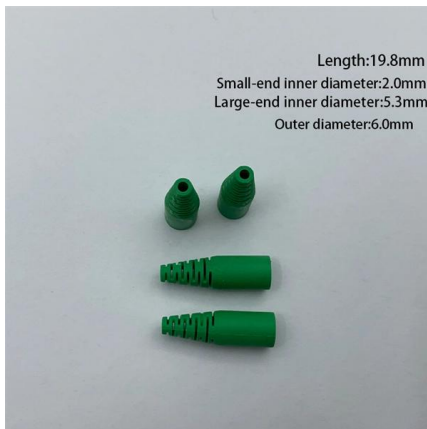


Temporary electrical installations on construction and

Electrical site distribution equipment All units for the distribution of electricity are to comply with BS 4363 Specification for distribution assemblies for

How to Install a Cable Distribution Box Safely and

In modern electrical systems, cable distribution boxes (also known as electrical distribution boxes or distribution boxes) play a crucial role as the key



Essential Guidelines for Safe Temporary Electrical

Implementing Best Practices for temporary electrical installations is crucial for minimizing risks and enhancing safety. Below are some recommended practices

Distribution Boards

Distribution boards, often referred to as electrical panels or breaker boxes, serve as the nerve center of any electrical system. Here we explore the crucial parts of a distribution board and gain insights into



Key Points Of Installation And Collocation Of Distribution Box In

If they are combined in the same distribution box, power and lighting lines should be set separately. 7. The wire inlets and outlets in the distribution box and switch box shall be set at the lower bottom of



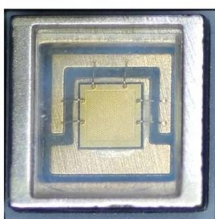
Installation requirements for distribution boxes

Installation of closed or explosion-proof electrical facilities; distribution box electrical components, meters, switches and lines should be arranged neatly, firmly installed, easy to operate.



Temporary Power Safety

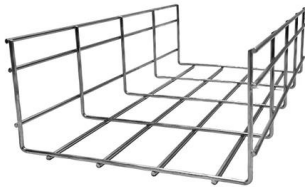
However, temporary power is essential to construction worksites and poses a great risk to workers. Follow these steps to ensure proper safety procedures are met





How to Install a Distribution Box--A Comprehensive

Whether you are an electrical contractor or a construction brigade, knowing how to properly and safely install distribution boxes is the basis of



Electrical Code rules for portable and temporary electrical power

Electrical Code rules for portable and temporary electrical power distribution This document is a summary of rules based on the National Electrical Code (NEC). Refer to the NEC for additional rules.

Temporary Installations, based on the 2020 NEC

Temporary installations for carnivals, circuses, fairs, and similar events must be installed per Article 525, not Article 590. After the construction is completed,



Temporary Power Safety: Distribution Boxes + Industrial

Learn how construction power, temporary electrical boxes, and IP67 connectors combine with E-abel distribution panels and Weipu industrial



Five mistakes when installing temporary distribution boxes and how to

In this article you will read about the five most common mistakes when installing temporary distribution boxes and practical tools to avoid them. Whether you are an installer yourself



Electrical Safety during use of Temporary Electrical Installation

Such installations are generally unprotected from environmental hazards as compared to installations in the buildings. The major risks in the use of power in such installation arise from short

Temporary Power Safety on Construction Sites: Best

Through a real-world project scenario, we explore how structured connectors, IP67 plug systems, and modular distribution cabinets create safer,





Temporary Electrical Installation Checklist

The checklist contains over 100 compliance items to verify requirements are met for safety of the electrical installation. The inspector must declare if the installation is

Five mistakes when installing temporary distribution boxes and how to

Temporary distribution boxes are indispensable at construction sites, events and temporary workplaces. Yet things often go wrong when installing or renting these installations,



How to Get Temporary Power for Your Construction Site

You're at the final stages of starting construction -- setting up your temporary power supply. How do you find a suitable power supply for your project? We've

Guide to Temporary Electrical Systems, 2nd Edition

While much of the standards development is still underway and yet to be published, the Guide to Temporary Electrical Systems gives guidance based on the latest



Contact Us

For datasheets, pricing, or custom telecom energy solutions, please visit:
<https://koskolong.co.za>