



**Adam Tas Corridor Energy**

# **Installation of cable tray internal wire duct**





## Installation of cable tray internal wire duct

---



### Tray Installations

Tray Installations The placement of cables, ducts, and conduits can be done using cable trays - for both outside plant (OSP) and interior spaces (ISP). This allows

### Cable Installation Manual for Power and Control Cables

When cables are installed in a raceway, underground electrical duct or cable tray, the following factors must be considered // Conductor configuration



### Cable Tray and Conduit Installation Method Statement

Step-by-step cable tray and conduit installation method with safety, quality and inspection procedures as per IEEE standards.

### Wiring Ducts Selection Guide: Types, Features,

Wiring ducts are rigid trays typically used as raceways for cables and wires within electrical



enclosures. Wiring ducts, along with conduit, wireways, and cable



### **METHOD STATEMENT FOR Cable tray and trunking system installation**

Cable tray and trunking system relevant to this particular section of works will be checked and verified that these are correct type.

### **Installation ducts: an overview of technologies and assembly solutions**

In this article, we explain what cable trays are, their types and materials, where and how to install them, and what to pay attention to in order to avoid mistakes and meet standard requirements.



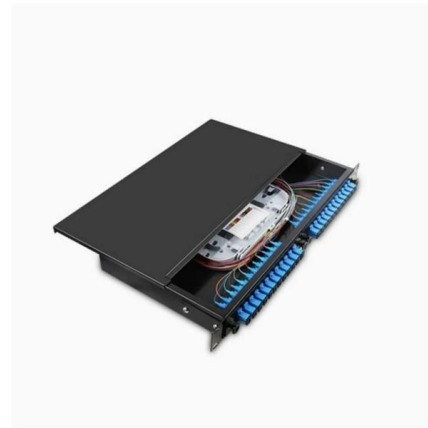
### **POWER CABLE INSTALLATION GUIDE**

Southwire Company's Power Cable Installation Guide provides installation information for extruded dielectric power cable systems. This guide covers copper and aluminum conductors from No. 14



## Cable Tray Installation

Whether you're building a commercial setup or upgrading an industrial plant, proper cable tray installation ensures neat wiring, safe access, and easy maintenance. But before you lay the first tray



## Cable Tray Technical Guide A practical guide to product selection and

A practical guide to product selection and installation This guide for engineers and installers has been developed by ABB as a practical reference regarding cable tray characteristics, installation, and

## Cable tray manual

These documents: ANSI/NEMA VE-1, Metal Cable Tray Systems; NEMA VE-2, Cable Tray Installation Guidelines; and NEMA FG-1, Non Metallic Cable Tray Systems, are an excellent industry resource in



## A Guide to Installing and Supporting Electrical Cable Trays

This guide covers the critical steps, from selecting the right electrical cable tray and performing accurate cable fill calculations to managing a safe cable pull through



## Best Practice Guide to Cable Ladder and Cable Tray Systems

Introduction This publication is intended as a practical guide for the proper and safe\* installation of cable ladder systems, cable tray systems, channel support systems and associated supports.



## Method Statement for Installation of Cable Tray or Trunking

On completion of cable tray/ ladder installation including fittings, inspect exposed finish. Remove burrs & construction debris and repair damages finishes

## Cable Tray Installation Procedure Guide

This document provides procedures for installing cable trays according to international standards. It describes inspecting and storing cable trays upon





## Installation ducts: an overview of technologies and assembly solutions

A cable tray is a rigid cover--usually in the form of an open or closed channel--designed for guiding and protecting electrical, signal, telecommunication cables, or installation pipes. It can be

## Cable Tray Systems in Ducts, Plenums and Other Air Handling Space

The wiring methods allowed under Section 300-22 that utilize cable tray must follow the installation and safety requirements as covered in Section 318 - Cable Tray." Many of the misinterpretations about

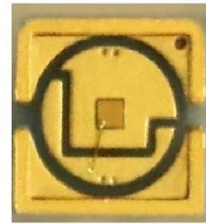


## Busway and Cable Tray Installation

Cable Tray Installation is the process of installing a structural system to securely fasten and support cables and raceways. It involves calculating angles and bends as well as measuring and cutting

## Tray Installations

The placement of cables, ducts, and conduits can be done using cable trays - for both outside plant (OSP) and interior spaces (ISP). This allows cables and ducts



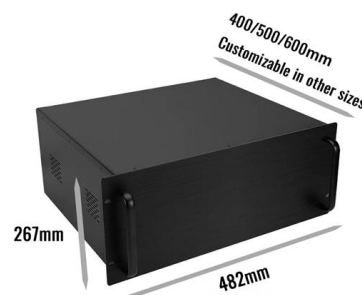
## Cable Tray Installation Method Statement

Below is the detailed cable tray installation method statement not only for cable tray but also applicable for GI ladder and trunking for indoor and outdoor applications



## Cable Tray Technical Guide A practical guide to product selection and

Cable tray is considered to be a system. It must provide continuous support for cables, and the electrical continuity of the cable tray system must be maintained.



## Wiring duct & trunking

ABB offers innovative wiring duct & trunking products for routing and concealing wiring in control panels. They are available in numerous configurations, materials,





## Installation Of Cable In Cable Trays: NEC, Safety

Installation of Cable in Cable Trays ensures proper routing, cable management, NEC compliance, grounding, fire safety, and load capacity.



## Fiber Cable Tray System

Installation and maintenance of cable tray wiring systems should be performed by a minimum of two qualified technicians. For the purposes of this guideline, a qualified technician is one who is familiar

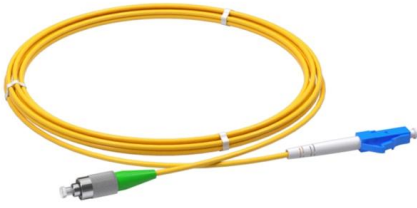
## Cable Routing

Unlike conduit, cable trays are open, leaving the cables exposed to the environment. This often necessitates special cable insulation rated for exposure



## GUIDE CABLE TRAYS TECHNICAL

If it has excellent electrical continuity and is integrated in the installation's equipotential bonding system, a metal cable tray reduces the coupling's impact and thus contributes to good EMC of the electrical



## Understanding Cable Pathways, Cable Conduits, Cable

A cable pathway or raceway is a protective channel or enclosure made of materials like metal or plastic, used to manage and safeguard electrical cables and wires. It



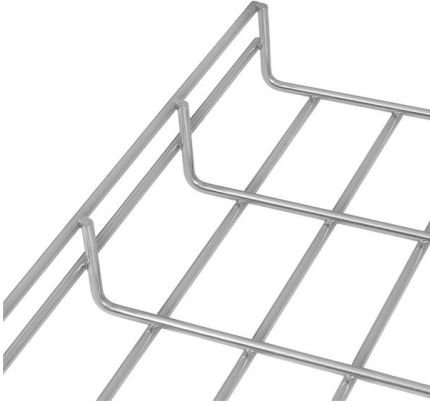
## Cable Tray & Conduit Installation Guide

This document provides a method statement for installing surface conduits, cable trays, and trunking. It outlines the scope of work, necessary equipment, health

## Cable Tray Installation

Learn everything about cable tray installation with our complete guide. Discover types, steps, and safety tips for efficient electrical cable management.





## **Cable Tray Systems**

Durable and reliable cable tray systems providing premium performance in commercial and industrial applications, available in a variety of materials to suit your needs.

## **Contact Us**

---

For datasheets, pricing, or custom telecom energy solutions, please visit:  
<https://koskolong.co.za>