



Adam Tas Corridor Energy

Installation of manual hole drill for distribution box





Overview

These are easy to use and don't pull the workpiece towards the drill so are safer than helical drill bits. Are you tired of drilling sloppy holes in electrical boxes?

Learn the secret to drilling perfect holes every time! In this video, we'll show you a simple and easy-to-follow technique to ensure accurate and precise holes in electrical boxes. The table below highlights the most commonly used power tools when you install distribution box setups: When you install distribution box. Necessary tools include screwdriver, wire stripper, electric drill, multimeter, and an insulation resistance tester.



Installation of manual hole drill for distribution box



A Comprehensive Look at Horizontal Directional Drilling

In today's high-demand energy sector, utilities and infrastructure developers face increasing pressure to deliver projects more quickly while

How to Install a Cable Distribution Box Safely and

This article provides a detailed overview of the entire process of installing a distribution box, from pre-installation preparation to post-installation



Small distribution box installation steps

The steps to install a small distribution box include selecting a suitable location, installing the base, placing the distribution box, connecting the



How to Install Small Enclosures

Excavate a hole, lift the box and cover into place separately, and backfill to complete the installation. A successful install begins at the



What hand and power tools are used to install a

Install distribution box systems with essential hand tools like screwdrivers and pliers, plus power tools such as drills and impact drivers for efficient setup.



Electric Panel Installation Method Statement

This document provides a method statement for installing and terminating electric panels and distribution boxes. It outlines 4 steps: 1) Pre-installation preparation



Hydraulic Knockout Hole Punch Driver Kit, Portable Manual

Hydraulic Knockout Hole Punch Driver Kit, Portable Manual Hydraulic Hole Punch Kit, 360 Degree Rotating Electrical Conduit Hole Cutter Set with 6 Dies, for Distribution Boxes Metal Sheet :





Essential Steps for Effective Septic Distribution Box Installation

Learn how to install a septic distribution box with essential steps, tips, and maintenance recommendations for long-lasting efficiency.



Junction box drilling 101: a step-by-step guide for beginners

By following the steps outlined in this guide, you can drill junction boxes with precision and confidence. Remember to prioritize safety, use the right tools, and take your time.

How To Determine The Perfect Size Hole To Drill For

Learn how to determine the perfect size hole to drill for electric installations with our comprehensive guide. Find out the tools and techniques needed to ensure a



Pipeline Design for Installation by Horizontal Directional Drilling

Published by the American Society of Civil Engineers Library of Congress Cataloging-in-Publication Data Pipeline design for installation by horizontal directional drilling : ASCE manual of practice.



Underground Installation Guide

SCOPE The project consists of the installation of the complete underground duct system for both primary and secondary voltages, including conduit, pull boxes, sectors ground sleeves, equipment



Methods for Cutting Holes in Hubbell Enclosures

Hole Saw Drill a 7/8" pilot hole with a carbide tipped masonry drill. hole using a diamond tipped masonry hole saw. This is the preferred method from engineeri Estimated drilling time is 1 - 1.5 minutes.

Drilling PERFECT Holes in Electrical Boxes with Ease

Learn the secret to drilling perfect holes every time! In this video, we'll show you a simple and easy-to-follow technique to ensure accurate and precise holes in electrical boxes.



drill

Use a step drill to drill the hole. These are easy to use and don't pull the workpiece towards the drill so are safer than helical drill bits. Don't try to



How to Install Large Enclosures

The following steps walk through the main points of a typical field installation of an underground enclosure that is 24 inches by 36 inches or larger.



Junction box drilling 101: a step-by-step guide for beginners

Electrical junction boxes play a crucial role in the distribution of electricity throughout a home or building. Proper installation of these boxes is essential for safe and efficient electrical

How to Cut a Hole in an Electrical Box

A hole saw attached to a standard drill provides a quick and precise method for cutting circular openings. For non-circular or custom openings, a metal nibbler or a rotary tool with a



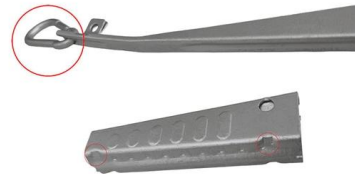


Distribution Box Installation: Advanced Techniques

Distribution Box Installation: Advanced Techniques. The installation of a distribution box is explored in detail, highlighting advanced techniques for achieving a professional and efficient setup.

Say Goodbye to DIY Struggles: How to Drill a Junction Box with Ease

This comprehensive guide will walk you through the process of drilling a junction box, covering everything from choosing the right tools to ensuring a secure and code-compliant installation.



Dahuasecurity

Hier sollte eine Beschreibung angezeigt werden, diese Seite lässt dies jedoch nicht zu.

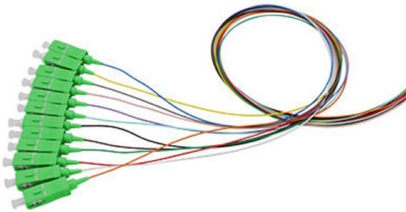
How to Install a Distribution Box--A Comprehensive

Distribution Box Installation: Put the distribution box on the installation surface, and align the position of the expansion bolts and tighten the screws. This



Comprehensive Guide to Installing a Septic Distribution Box

Step-by-Step Guide to Installing a Distribution Box for Septic Systems Installing a distribution box is a critical component in the proper functioning of a septic system. This section will



The Proper Way To Drill A Hole For An Electrical Service

What tools do I need to drill a hole for an electrical service? When installing an electrical service, it is important to drill holes in the proper locations to ensure the safe and efficient delivery of



Cautions and Requirements for Installation of

Distribution box is a low-voltage distribution device which assembles switchgear, measuring instruments, protective appliances and auxiliary equipment in a closed



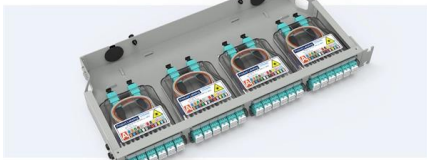
How to Install Large Enclosures

After bracing the enclosure, carefully install the covers. Rough handling of covers during installation with heavy machinery can cause the lip of



Pre-Terminated Patch Panel

- Multi-application support
- Flexible configuratvion
- Modular design



Cable Gland Plug
28mm Cable Gland Plug



MPO-LC up to 96 cores
MPO direct connection 48 ports



Mounting Bracket
Semi-open mounting holes

A Step-By-Step Guide To Drilling A Hole In A Junction

Learn how to safely and effectively drill a hole in a junction box with this step-by-step guide. Perfect for DIYers and electricians.



Distribution Box Installation: A Complete Guide to Safe

The distribution box, often referred to as a breaker box, fuse box, or electrical panel, is a critical component of any electrical system. It acts as the central hub for

Contact Us

For datasheets, pricing, or custom telecom energy solutions, please visit:
<https://koskolong.co.za>