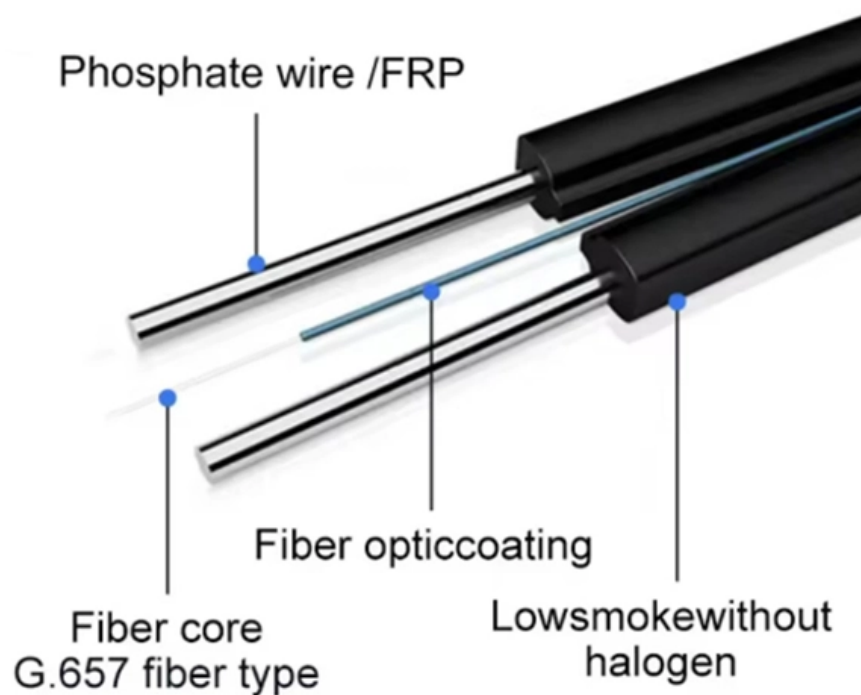




Installation spacing of heat-dissipating electrical distribution boxes



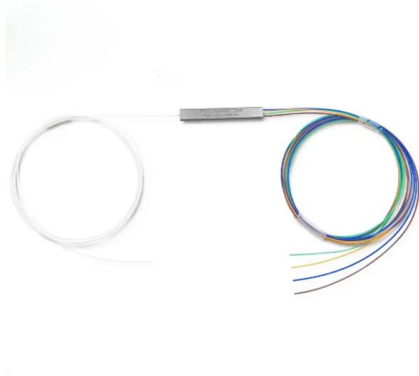


Overview

With horizontal air flow installations, the required free space must be at least 200 mm. The International Electrotechnical Commission (IEC) is the leading global organization that prepares and publishes International Standards for all electrical, electronic and related technologies. The technical content of IEC publications is kept under constant review by the IEC.



Installation spacing of heat-dissipating electrical distribution boxes

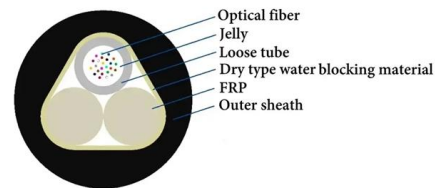


How to Select and Size Enclosure Thermal Management Systems

Housing electrical components inside an enclosure is a requirement in industrial applications. The enclosure is required to protect the controllers, power distribution components, power supplies and

The installation requirements for the distribution box

A distribution box is the heart of any electrical system. It takes the incoming power and safely distributes it to different circuits throughout your



IEC Standard for Power Distribution Board Design and

IEC Standards Relevant to Power Distribution Board Design The IEC has published multiple standards that apply to Power Distribution Board Design.

Heat Dissipation in Electrical Enclosures

Heat Dissipation in Electrical Enclosures
Selection Procedure: Determine input power in



watts per square feet by dividing the heat dissipated in the enclosure (in



Duct Bank Details and Pipe Sleeves Details

A duct bank is an underground network of conduits (typically PVC, HDPE, or concrete) encased in concrete to provide a protected pathway for

Heat Dissipation in Electrical Enclosures; FanBlower Selection

The accumulation of heat in an enclosure is potentially damaging to electrical and electronic devices. Overheating can shorten the life expectancy of costly electrical components or lead to catastrophic



Optimize the internal layout of distribution boxes: reduce arc risks

That's what optimizing a distribution box achieves--it transforms chaotic energy flow into a predictable, safe system where electricity moves efficiently while minimizing dangerous heat buildup and arc faults.



power distribution boxes for construction sites exported to Saudi

Conclusion The core of exporting power distribution boxes to Saudi construction sites is "compliance first, environmental adaptation, and localized services". It is recommended to

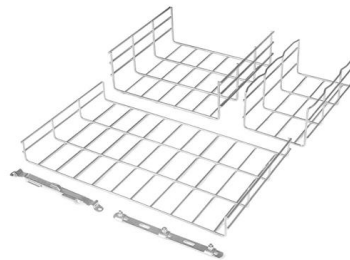


The installation requirements for the distribution box

Leave enough space around the box for air to flow and for future check-ups. Good airflow helps prevent overheating, and clear space makes it

Requirements And Specifications For Installation Of

In flammable and explosive environments, explosion-proof distribution boxes should be selected and explosion-proof treatment should be carried out.



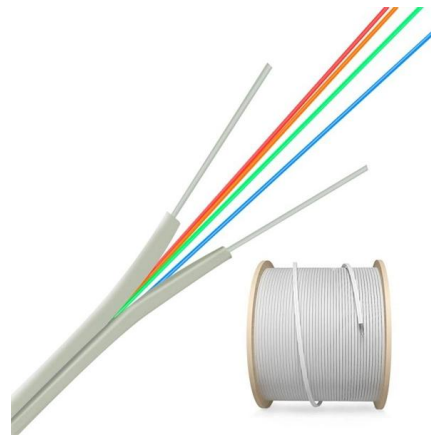
Installation requirements for distribution boxes

Distribution boxes shall be made of non-combustible materials; open distribution boards may be installed in production places and offices with low electric shock risk; enclosed cabinets shall



How to Select and Size Enclosure Thermal Management Systems

Optimal performance is achieved by placing a heater near the bottom of an enclosure to allow natural convection for heat distribution. Larger enclosures often require fan heaters to distribute the heat



Heat Dissipation in Electrical Enclosures; FanBlower

First calculate the surface area of the enclosure and, from the expected heat load and the surface area, determine the heat input power in watts/ft.2 Then the expected temperature rise can be



How to Improve Heat Dissipation in Photovoltaic Glazing for Longevity

Additionally, SCHOTT integrates thermally conductive interlayers and optimized cell spacing designs to facilitate heat distribution across the glazing surface, extending the operational





How to confirm whether the installation location of the

The electrical distribution box plays a vital role in the power system. It is responsible for distributing electricity to various circuits and equipment.



Summary of key points for construction and installation of distribution

The construction and installation points of distribution boxes and switch boxes are summarized as follows: 1. Select qualified products that meet national standards and safety requirements.



+Rittal_01US_english dd

Openings for air inlet and outlet in the cooling units of enclosures should have a minimum distance of 200 mm from a wall or from one another. Other minimum distances can be obtained from specific

IEC 60670-24:2024

NOTE 1 Enclosures according to this document are mainly used for distribution board for housing protective devices and other power dissipating electrical equipment and are installed at the beginning



Optimizing Air Circulation in Electrical Enclosures

To ensure smooth and successful operations, companies can strategically space and position components within electrical enclosures to enhance air circulation and mitigate hot spots.



IEC 60670-24:2024

These enclosures are intended to be installed where the prospective short circuit current does not exceed 10 kA unless they are protected by current limiting protective devices with a cut-off current



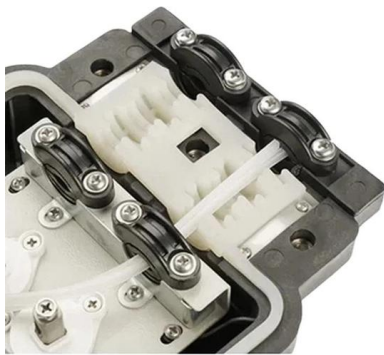
IDE Electric

Transparent window: Recommended for outdoor use: UV protection according to the ISO 4892-2 standard, method A: 1000 h. Supplied in individual packaging. When several items are sent together,



Low voltage distribution box: weatherability standard and protection

Low voltage distribution box outdoor use requires IP65 or NEMA 4X ratings, corrosion-resistant materials, and proper sealing for lasting weather protection.



The Ultimate Guide to Selecting the Right Industrial Distribution Box

Master the selection of electrical distribution boxes and meter sockets. Learn about enclosure materials, thermal management, and service entrance equipment for 2026.

Heat Dissipation in Electrical Enclosures; FanBlower Selection

Dissipation in sealed electrical enclosures The accumulation of heat in an enclosure is potentially damaging to electrical and electronic devices. Overheating can shorten the life expectancy of costly



Electrical Distribution Boxes for Power Distribution

The Wieland distribution boxes, in compliance to IEC 61439, together with our installation connector systems, in compliance to IEC 61535, as well as its system



What Are Electrical Busbars? A Complete Guide to

The performance and safety advantages they offer What Is an Electrical Busbar? An electrical busbar is a metallic strip or bar that carries large



Calculating heat dissipation Calculating heat dissipation

Dealing with heat losses in enclosures depends on whether the enclosure is equipped with cooling accessories, like filter fans and cooling units, and whether the enclosure is supposed to be "air tight".

Key Points Of Installation And Collocation Of Distribution Box In

If they are combined in the same distribution box, power and lighting lines should be set separately. 7. The wire inlets and outlets in the distribution box and switch box shall be set at the lower bottom of





Contact Us

For datasheets, pricing, or custom telecom energy solutions, please visit:
<https://koskolong.co.za>