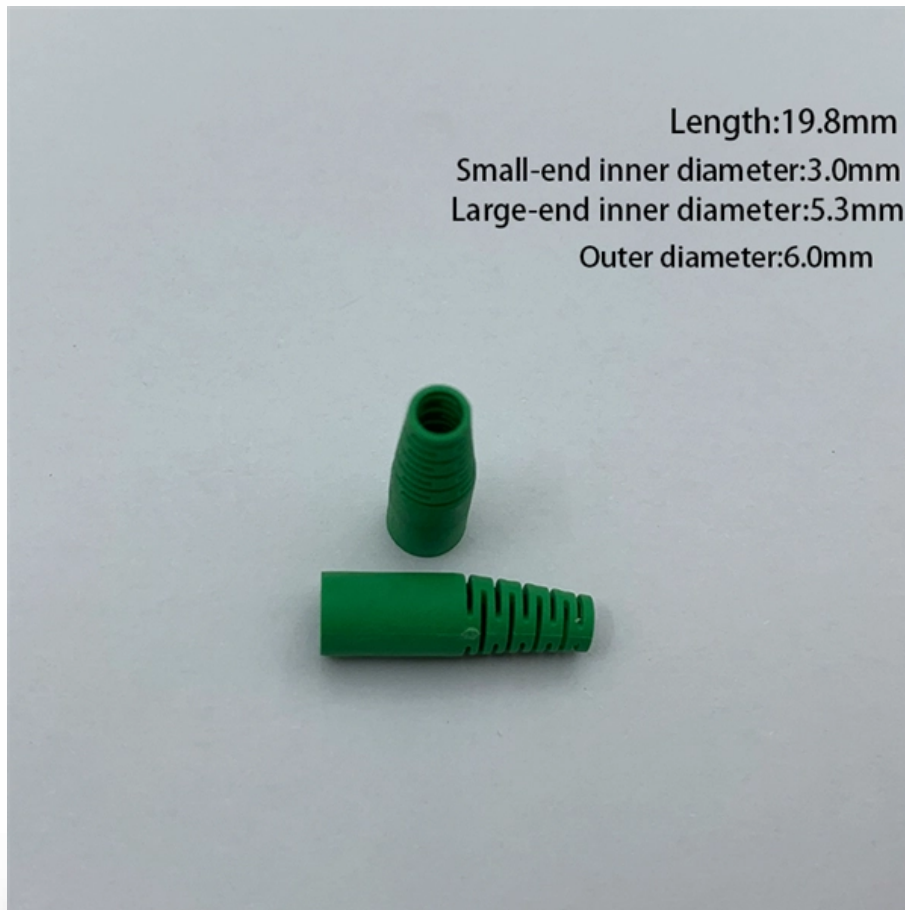




Adam Tas Corridor Energy

Integrated Power Supply Equipment Center for Computer Room





Integrated Power Supply Equipment Center for Computer Room



ABB Power Distribution for Data Centers

Partner with ABB to power your data center operations 24/7 with solutions that are space-saving, time-saving, energy-saving, cost-saving and infinitely scalable.

Industrial PowerCenter , Industrial Integrated Electrical

Industrial integrated power systems: PowerCenter is your single-source, integrated electrical system for cost-effective, reliable power distribution from project



Data center & server room, Power, Cooling and rack products

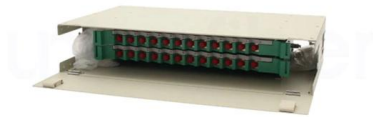
Discover our Data Centers & Server Room power protection, precision cooling, and IT equipment racks for industrial applications, small businesses, and homes.

Facility Considerations for the Data Center

Power and UPS Considerations for the Data Center Although IT equipment has always



required electrical power, the way IT systems are deployed today has created new power-related problems

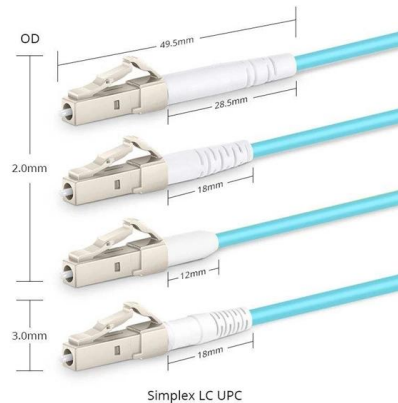


Server Room Power Layout: Stop Overloads & Downtime

Optimizing server room power layout is crucial for ensuring efficiency and reliability. A well-thought-out power layout minimizes downtime and maintains optimal temperatures. This article explores key

Integrated Power Center (IPC)

Browse our products and documents for Integrated Power Center (IPC) - Combines electrical distribution equipment and building management controls into a single



Data Centre Power Systems & Solutions , HARTING Technology Group

Data centre power systems are designed to provide reliable and scalable power to equipment racks, while data centre power equipment, such as power distribution units (PDUs) and uninterruptible



A Free Guide to Data Center Power

The term "data center power" refers to the infrastructure, systems, and processes used to provide and manage power in a data center. This includes power supply

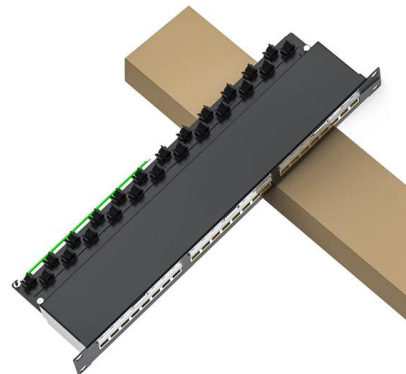


IEM

IEM innovates and optimizes power distribution for the technology and data center sectors--the fastest, most flexible, most scalable

Typical layout of a Data center arranged by three-main

Typical layout of a Data center arranged by three-main areas: server room, power room, NOC To ensure stable and continuous operation of IT devices 24/7, in



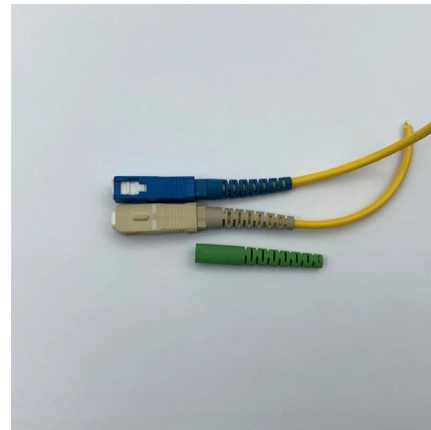
EverExceed UPS room power supply system design

The power supply range of the UPS power supply and distribution system is computer equipment (host and auxiliary equipment), communication equipment,



Industrial PowerCenter , Industrial Integrated Electrical Systems

Industrial integrated power systems:
PowerCenter is your single-source, integrated electrical system for cost-effective, reliable power



Server room , IT power solutions , Eaton

Properly safeguarding servers, storage, network switches and other IT equipment from damaging power anomalies requires a comprehensive approach. From



Google

Checking your browser before accessing undefined Click here if you are not automatically redirected after 5 seconds. Checking your browser - reCAPTCHA





ASHRAE TC9.9 Data Center Power Equipment Thermal Guidelines

Data Center Power Equipment Thermal Guidelines and Best Practices Whitepaper created by ASHRAE Technical Committee (TC) 9.9 Mission Critical Facilities, Data Centers, Technology Spaces, and

Wiring Closet

Wiring closet is also called an equipment room or server room (and various other names). It is a room on the floor of a building that contains hubs,



Power Distribution Unit (PDU) for Data Centers

Looking for a reliable PDU? Vertiv's power distribution units can remotely monitor and deliver consistent power to keep your operations running.

Power Supply Requirements for ICT rooms

The minimum requirement for main electrical panels for normal power supply, emergency supply and uninterruptible power supply is that they shall be located in separate cabinets. Main electrical panels



How to Design a Secure and Resilient Server Room

An article on how to design a resilient and secure server room power supply to protect critical servers and IT networks from power outages.



TIP applications for power distribution , Application manual

The voltage quality characterizes the conformity of important criteria of electric power supply for the operation of equipment with the voltage properties assured by the supplier.



Power distribution and server room power supply

We propose a more stable power receiving and distribution system with DC high voltage circuit breakers, highperformance air circuit breakers, and an





Delta InfraSuite Power System for Large Enterprises and Data

Delta InfraSuite Power System provides completely integrated power distribution for optimal power management of large enterprises and data centers.



UPS Room Layout Guide , Vital Power

Discover the optimal UPS room layout for your uninterrupted power supply needs. Explore Vital Power's comprehensive guide for efficient UPS installation and

Computer Rooms & Data Centers - Banks Electrical

Banks-EC specializes in designing and installing power solutions for data centers and computer rooms, ensuring uninterrupted operations, energy efficiency, and compliance with industry standards.



Listing Requirements for ITE Installed in Computer Rooms

For equipment that is not intended to be installed in computer rooms and therefore is not designed for it, manufacturers are permitted either to mark on



Contact Us

For datasheets, pricing, or custom telecom energy solutions, please visit:
<https://koskolong.co.za>