



Adam Tas Corridor Energy

Intelligent Cold Aisle Explosion-proof Type for Carrier Backbone Networks





Intelligent Cold Aisle Explosion-proof Type for Carrier Backbone Net

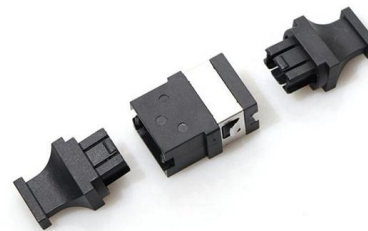


Aisle Containment Systems Physical Containment Systems

Door Options A choice of door options is available for use with the aisle containment system to provide the right combination of safety and security. Dual sliding doors or Vertical doors can be chosen for

What are hot and cold aisles in the data center?

Using hot and cold aisles in a data center is part of an energy-efficient layout for server racks and other computing equipment. Find out more here.



Combining Cold Aisle Containment with Intelligent Control to Optimize

While it is possible to take incremental steps to improve cooling energy efficiency by degrees, Emerson Network Power recommends implementing a comprehensive efficiency management platform that

Carrier Transicold Presents Intelligent Cold Chain Solutions for Global

"Global shipping demands intelligent cold chain



solutions that deliver advanced precision, enhanced control and consistent reliability to navigate the complexities of a rapidly evolving logistics



Cold Aisle Containment

Cold aisle containment will also minimize or even eliminate moisture management requirements. In addition to energy savings and improved operational efficiency,

Carrier Backbone Network : Service Provider : Solutions for : Solutions

In the current carrier backbone networks, handling increasing traffic is a serious challenge facing network operations. In addition, providing a value-added service as an advantage over others is an



Speedbone , Cold aisle containment

This ensures that the cold air supply through the raised floor only needs to be directed into these cold aisles. The servers draw in this cold air and, after being warmed through the cooling process,





Hot/Cold Aisle Containment , Data Center Containment

Hot and cold air containment systems designed to maximize cooling predictability, capacity, and efficiency at the rack, row or room level. AZE's Aisle Containment



Structured Cabling: The Hidden Driver of Cold Aisle

Discover how structured cabling enhances cold aisle cooling efficiency, reduces energy costs, and extends equipment lifespan in modern data

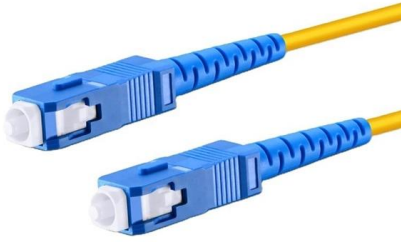
TECHNICAL DATA

Next Generation Corridor Aisle containment is the solution to the challenges which data centres have been presented with since day one: the optimisation of cooling and energy-efficiency through the



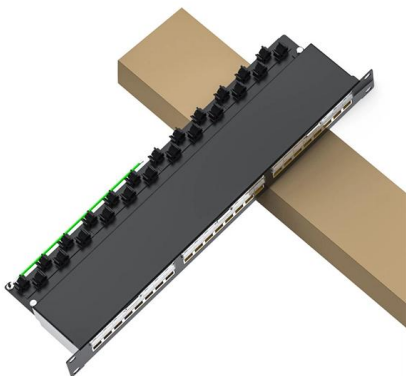
Hot Aisle Containment vs. Cold Aisle Containment:

Implementation of both hot and cold aisle containment does not reduce the volumetric flow rate of bypass airflow in a computer room. When cold



Cold Aisle Containment in Data Centers , Subzero

With cooling provided through a raised floor, this cold aisle containment project uses rigid wall panels in conjunction with the Polar Cap 2 roof system to provide

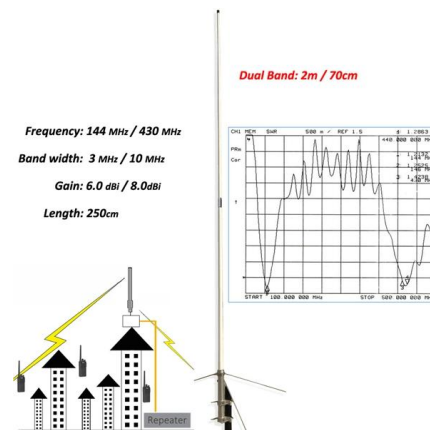


Document Display , HPE Support Center

Document Display , HPE Support Center Support Center

BUILDING BLOCKS FOR DATA CENTER INTEROPERABILITY

Infrastructure as a Platform addresses the key building blocks for data center interoperability that can provide agility for budgets, scalability for demand and flexibility for technology choices.





Hot and Cold Aisle Containment Solution , Legrand

Hot aisle containment is used to capture and direct hot exhaust air back to the cooling units. This popular option is ideal for data centers looking to maximize

Backbone Network Modernization

Huawei's intelligent, end-to-end WDM/OTN optical transport solution is designed for the backbone core, metro core, metro aggregation layer, and metro edge networks.

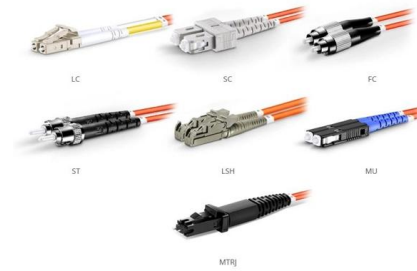


Cold Aisle Containment: Complete Implementation Guide for Data

Complete cold aisle containment guide for data centers. Learn CAC benefits, implementation steps, and achieve 35% cooling cost reduction.

Carrier Transicold Showcases Future-Ready Cold Chain

Home News keyboard_arrow_leftArrow
backHome Carrier Transicold Showcases Future-Ready Cold Chain Solutions at Intermodal Europe 2024



OM1 Fiber Patch Cable Family

Carrier Backbone Network : Service Provider : Solutions

To achieve these goals, devices used in carrier backbone network must have both high functionality for handling increasing traffic and flexibility for providing various



Carrier Transicold Showcases Future-Ready Cold Chain

Carrier Transicold helps improve transport and shipping of temperature-controlled cargoes with a complete line of equipment and services for refrigerated transport



Data Center Containment Curtains

TRAX hot aisle / cold aisle data center curtains are the industry leading low cost containment solutions. Increase cooling efficiency while measurably lowering





Carrier Backbone network SDN solution-H3C

H3C's Intelligent SDN Network Solution utilizes an intelligent network control layer to achieve smart management and intelligent operations for the network. Through northbound interfaces, it presents



Nationwide bandwidth explosion needs cool heads

Background: A national 'flag carrier' operator was upgrading core backbone network bandwidth with very energy dense equipment that stretched existing cooling capabilities. They wanted to implement aisle

DCI Backbone Network Solution

DCI Backbone Network Solution By 2025, 90% of services will be migrated to the cloud, being hosted in DCs. DCs are getting larger, and inter-DC traffic will quadruple over the coming five years, requiring



TOPWELLTECH

TOPWELLTECH - network cabling containment products, network cabinet



Ordering information

NO.	1	2	3	4	5	6
Model	SP280	SP280	SP280	SP280	SP280	SP280
Product name	Patch Panel	Patch Panel	Patch Panel	Patch Panel	Patch Panel	Patch Panel
Illustration						
HU	1	2	4	1	2	4
Maximum number of cores	144	288	576	144	288	576
Product size (including modules and accessories)	483.0*192.0*44.0 (mm)	483.0*192.0*88.0 (mm)	483.0*192.0*176.0 (mm)	483.0*192.0*44.0 (mm)	483.0*192.0*88.0 (mm)	483.0*192.0*176.0 (mm)
Standard color code	RAL9005	RAL9005	RAL9005	RAL9005	RAL9005	RAL9005
Inventory	√	√	√	√	√	√

CloudBackbone: Converged Network, Improved Efficiency

Huawei's CloudBackbone solution consists of Network Cloud Engine (NCE) and network devices. It features ultra-broadband, simplified, and intelligent characteristics, helping carriers to implement

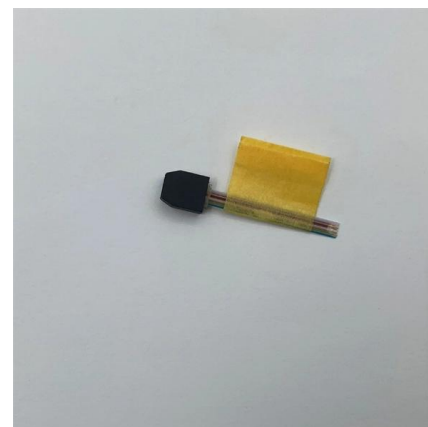


CloudBackbone: Converged Network, Improved Efficiency

CloudBackbone: Converged Network, Improved Efficiency Huawei's CloudBackbone solution consists of Network Cloud Engine (NCE) and network devices. It features ultra-broadband, simplified, and

The Advantages And Disadvantages Of Hot-Aisle, Cold

But there are some disadvantages to cold-aisle containment. Allowing the discharge air from the hot aisle to fill the room results in temperatures





ThinLINE® Container Refrigeration Unit , Carrier

No container protects your sensitive cargo like ThinLINE Defining excellence in cold chain shipping for over three decades Featuring Carrier

FusionModule2000 Smart Modular Data Center V500R002C03 Product

The FusionModule2000 smart modular data center solution (FusionModule2000 for short) includes smart modules A and B. This document describes the FusionModule2000 product



Contact Us

For datasheets, pricing, or custom telecom energy solutions, please visit:
<https://koskolong.co.za>