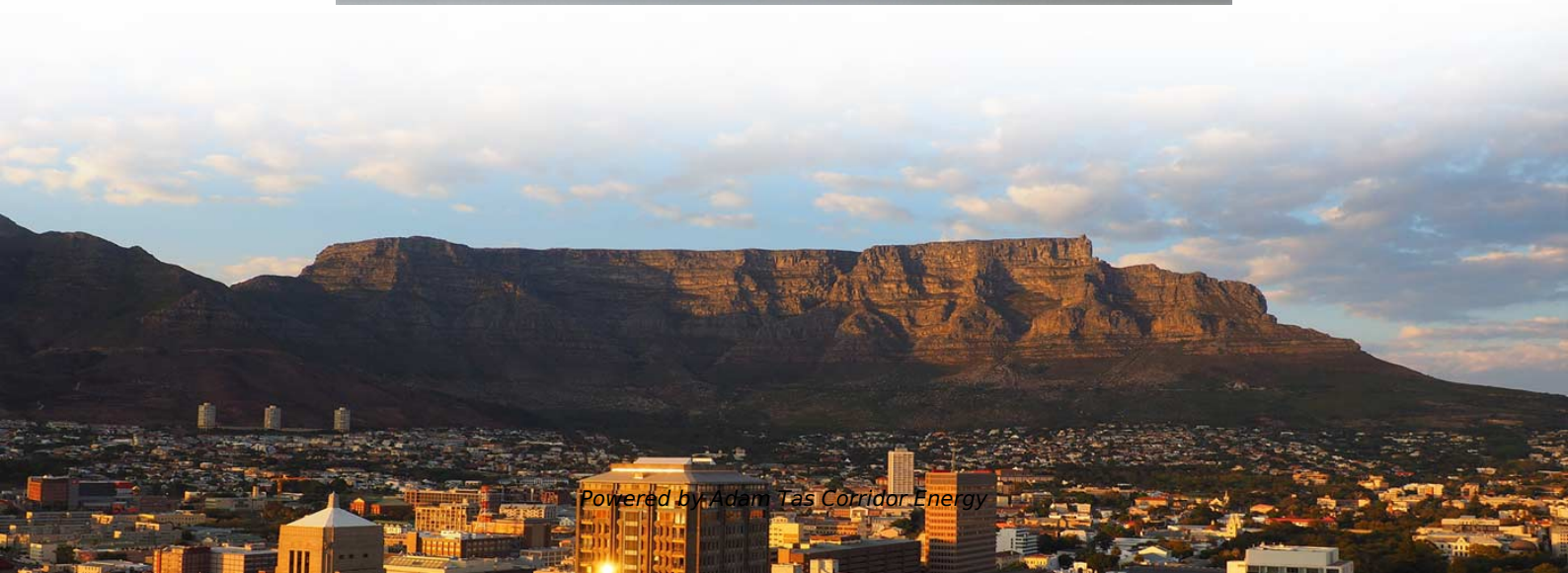




Adam Tas Corridor Energy

Ireland 19-inch chassis 19-inch installation solution





Ireland 19-inch chassis 19-inch installation solution

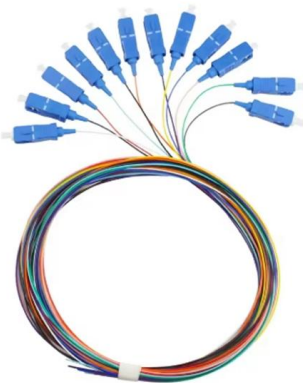
Prism 'L' Shaped 19-inch Chassis Support Rails Overview



Shop our selection of Prism 'L' Shaped 19-inch Chassis Support Rails for secure and efficient equipment installation. 19-Inch Server Racks: UK's Leading Data Centre Solutions

19" Chassis Components , nVent

nVent HOFFMAN Profiles 19-inch, AVP 19-inch equipment can be easily factory or field fitted in wall mounted enclosures when these profiles are used.



19 inch subracks and chassis

The application determines whether an open card holder or a fully enclosed solution is appropriate. How does the installation situation in the 19" rack affect the system

Prism 'L' Shaped 19-inch Chassis Support Rails Overview

Engineered for universal compatibility with all standard 19-inch rack enclosures, these Prism



support rails provide the robust strength, unwavering stability, and essential adaptability your heavy



19 Inch Rack Mount Din Rail Chassis Panel (4U/5U)

Compact and durable 19 inch rack mount DIN rail chassis Panel for organized installation of DINrail devices in data centers and industrial enclosures.



Comprehensive Guide to 19-Inch Server Racks for

This guide is your gateway to mastering the fundamentals of 19-inch server racks, from their standard dimensions to the intricacies of installation. We'll



19 Inch Rack Mount Enclosures , Metcase UK

A range of 3U instrument cases for mounting standard 19" subracks and chassis is also offered. METCASE enclosures can be supplied fully customised with all the





Gembird 19inch rack-mount server chassis 450mm black (ATX)

The Gembird 19-inch Rack-Mount Server Chassis is a robust and functional solution for housing server components in a standardized rack system. With a depth of 450 mm, this case provides ample space



19" Rackmount Chassis Platforms , Sarsen Technology

The rackmount systems we supply and support are designed and built to provide years of trouble-free performance in all demanding applications, and are available in flexible configurations that can adapt

19 inch rack mounting frame

This rack mounting frame helps to install Schneider Electric's protection relays on a standard rack system. It's ready to use 19 inch (453 mm) mounting frame with the dimensions in accordance to IEC



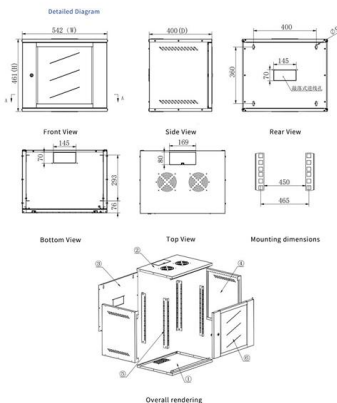
iConverter Chassis and Mounting Options

iConverter® Chassis and Mounting Options All iConverter modules are hot-swappable and can be installed in a 19-Module (2U) or 5-Module (1U) rack



Mounting Aid: The Solution for Installing 19-Inch

The mounting aid offers the solution for installing server rack accessories. The mounting aid is attached to one or both sides of the 19-inch



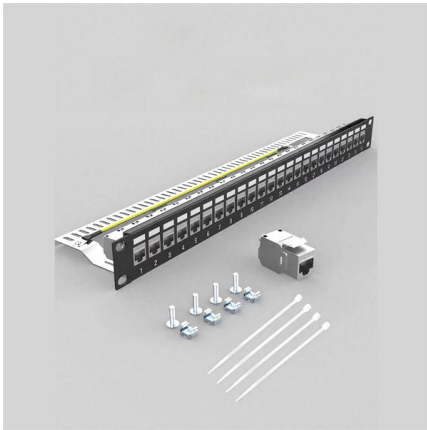
19-Inch Server Racks: UK's Leading Data Centre

Discover our high-quality Chassis Runners designed for 19-inch rack cabinets. Perfectly engineered to support heavy equipment. Order now! 19-Inch Server

1U Chassis -19 Inch Rack Mount

1U chassis is one of the best selling case for 19inch rack mount chaasis, we not only have 1U/2U/3U/4U server case, but can manufacture different sizes according to





19" Chassis Options , CP Cases UK

Our EasyGlide is the ultimate solution, saving you time and hassle. It fits into most of our cases and racks, so you can enjoy increased convenience and minimal

Rack Mount Enclosures: The Ultimate Guide to Cabinets

The 19-inch rack format is the most widely used standard for mounting equipment in racks, ensuring compatibility and interchangeability.

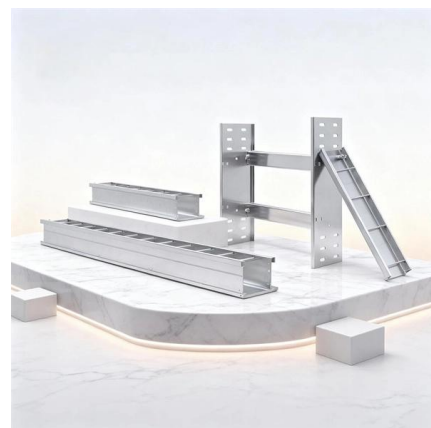


19" Rack PCs , InoNet

4U - 19" Rack PC Our 4U rack industrial computers are perfect if you need a robust and scalable solution to handle even the most demanding workloads. In addition,

19 Inch Server Chassis

19 Inch-Technology - Server Chassis: Chassis 1U, Chassis 2U, Chassis 3U, Chassis 4U, Chassis 5U, Chassis 6U, Chassis Accessories, Chassis from 6U now at low prices from Industry-Electronics your





Server case rackmount chassis 19 inch IPC ATX 4U

Chassis box for mounting a CPU in a rack 19 "cabinet. Specially designed housing for the installation of computer equipment of intensive use such as servers,

The Complete Guide to 19-Inch Industrial Chassis:

This guide gives you a clear, practical overview of 19-inch industrial chassis design, the differences between steel and aluminium, key finishing



How To Build A 19 Inch Rackmount Cases?

How to build a 19 inch rackmount cases to store all your electronic devices at home or office. It will protect your devices from any damage.

Custom Integrated 19" Racks Solutions , Elma Electronic

Integrated 19 in racks are complete rack systems that house electronics, power, cooling, and mechanical interfaces in a standardized 19-inch format -- providing a pre-engineered platform for



Designing for Success: Essential Aspects of 19-Inch Rackmount

Designing a 19-inch rackmount enclosure involves key aspects like optimal space utilization, cooling solutions, and durability to ensure reliable and efficient performance in various

Contact Us

For datasheets, pricing, or custom telecom energy solutions, please visit:
<https://koskolong.co.za>