



**Adam Tas Corridor Energy**

# **Ireland Inquiry Optical Line Terminal 25G**





## Ireland Inquiry Optical Line Terminal 25G

---



### 25G PON

25G PON leads the way for fiber evolution As fiber broadband networks become the infrastructure to connect everything and everyone, the

### An In-depth Guide to 25G SFP28 Optical Transceiver

Discover the advantages, specifications, and applications of 25G optical transceiver solutions--for high-speed data center, enterprise, and telecom networks.



### SFP28 25G LR Transceiver: Complete Guide for 25G Ethernet

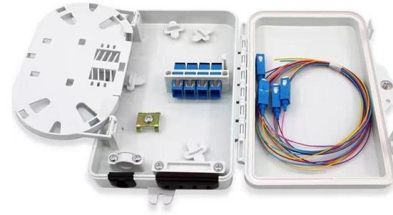
As 25G Ethernet becomes a key building block for modern data centers and enterprise networks, the SFP28 25G LR transceiver has emerged as a reliable solution for long-reach, high-speed optical

### Brocade 25GbE LR SFP+ Optimized, Certified Ethernet Optical

The Brocade® 25GbE long reach (LR) SFP+, part of the Brocade family of optical transceivers, is



optimized for Brocade products with Ethernet connectivity. This optical transceiver provides state-of



## GPON OLT Basics and Beyond: A Comprehensive

In today's rapidly evolving optical networking landscape, GPON (Gigabit Passive Optical Network) technology stands as the mainstream solution



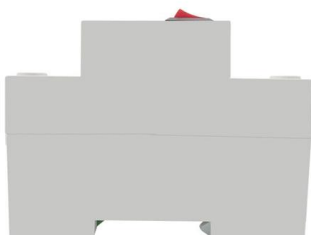
## 25G PON ONT

Focused on broadband-access and wireless-coverage products. For broadband access, we have already mass-produced all mainstream, standard-rate optical network terminals in accordance with



## Arista 25G Transceivers and Cables

Arista supports a range of 25G copper cables and optical transceivers compliant to IEEE standards and industry MSAs. Arista's 25G connectivity solutions include copper cables, Active Optical Cables





## 6COM 25G Transceivers and Cables FAQs

"Explore the 6COM 25G Transceivers and Cables FAQs, covering SFP28 modules, DACs, AOCs, network compatibility, technical features, and the benefits of 25G



## 25/50Gbps Passive Optical Network (PON)

WDM PON such as 25G-6Ch-CWDM, 25G-12 Ch-MWDM, 25G-12 Ch-LWDM, 25G-20 Ch-DWDM PtP links in O-band and 25G WDM PtP PON links in C/L band and 25Gb/s new line rate in C/ L Band

## Guide to Optical Line Terminal (OLT) Classifications:

In modern communication networks, optical line terminal (OLT) is the core device to realize point-to-multipoint (P2MP) in passive optical network (PON)



## 25G Optics: Building blocks for the modern fiber network

SFP28 25G optics are building tomorrow's networks today Driven by the rocket-propelled rise in demand for data, cellular, and video content for both business and consumer usages, many network



## ITU-T Rec. L.25 (01/2015) Optical fibre cable network maintenance

3.2.8 optical fibre identification: A technique for fibre identification by measuring certain optical characteristics to avoid incorrect cutting and/or connection of an optical fibre at a worksite. 3.2.9



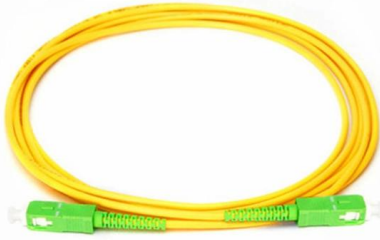
## Broadband Ireland Services and Nationwide Coverage

Explore Ireland's nationwide fibre rollout, high-speed broadband options and coverage updates. Learn how to connect your home or business effectively.

## What Is an OLT? , Definition, Function & Role in GPON

What is an OLT? Definition: An Optical Line Terminal (OLT), also called an Optical Line Termination, is a network device located at the service



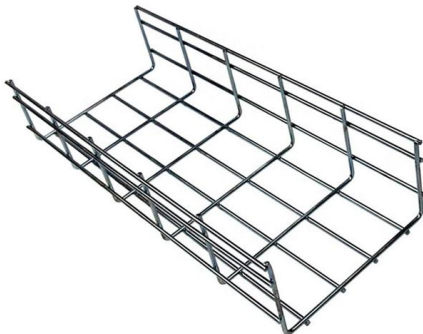


## Cisco 25G Transceivers and Cables Enable 25 Gigabit

SFP-25G-SR-S transceiver are an ideal solution for those same data center applications that require up 100 meters over OM4 fiber or 70 meters over

## Everything You Need to Know about 25G Optics

The 25G SFP28 optical module is an optical module with a transmission rate of 25Gbps. It is a new Ethernet standard with many



## Ogi Become First UK ISP to Deploy Nokia's 25Gbps Full

Phil Siveter, CEO of UK and Ireland at Nokia, said: "We are proud to have been selected by Ogi as one of the first UK deployments of our 25G PON technology,

## Decoding 25G Ethernet And Its Optics , by Emily Twain

Decoding 25G Ethernet And Its Optics Most us of us may quite familiar with 10G, 40G and 100G Ethernet network, but we know little about 25G

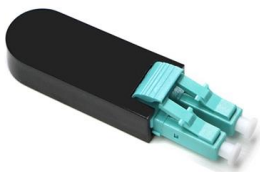


## 25GBASE-LR Application Overview

The TIA FOTC provides a comprehensive overview of 25GBASE-LR capabilities and single-mode optical fiber channel characteristics.

## 25GS-PON Specification 25 Gigabit Symmetric Passive Optical

The PMD requirements for the 25G signals of 25GS-PON are contained in clause 141 of IEEE Std 802.3caTM 2020, Draft Standard for Ethernet, Amendment: Physical Layer Specifications and



## You Should Know About 25G Transceivers and Cables

You Should Know About 25G Transceivers and Cables FAQs Q1: What is SFP28? A: SFP28 is the standard form factor of 25G optical modules. Its



## Nokia ONT Y-140Y-A 25GPON

A future-ready optical network terminal designed to deliver ultra-fast broadband to the home. Its sleek, minimalist form factor integrates seamlessly into modern home environments while housing



## Demystifying SFP28: The Essential Guide to 25G

SFP28 is a 25G transceiver module for fast, efficient data transfer in modern networks, offering high speed, compatibility, and energy savings.



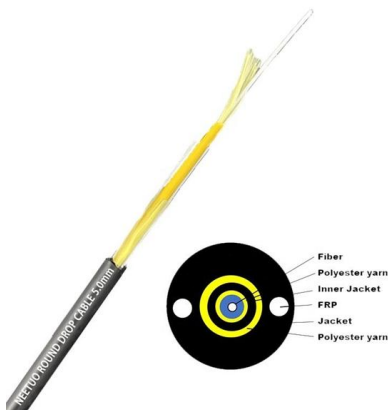
## 25GBASE IEEE 802.3by: The Single-Lane 25 Gb Ethernet Standard

Explore the IEEE 802.3by standard for 25GBASE Ethernet. Learn specs, media types, application scenarios, and how LINK-PP SFP28 modules support reliable 25GbE networks.



## Pluggable Transceivers Installation Guide

The LR SFP28 module provides a 25 Gb optical Ethernet connection using LC duplex optical connectors over SMF (single-mode fiber). One data lane operates in each direction, at 25.78 Gbps using single



## 25G SFP28 LR Transceiver: 10km Reach Optical

Experience reliable 25G data transmission with Innoptical's SFP28 LR transceivers. Reach up to 10km and ensure seamless interoperability for your long distance

## Contact Us

For datasheets, pricing, or custom telecom energy solutions, please visit:  
<https://koskolong.co.za>