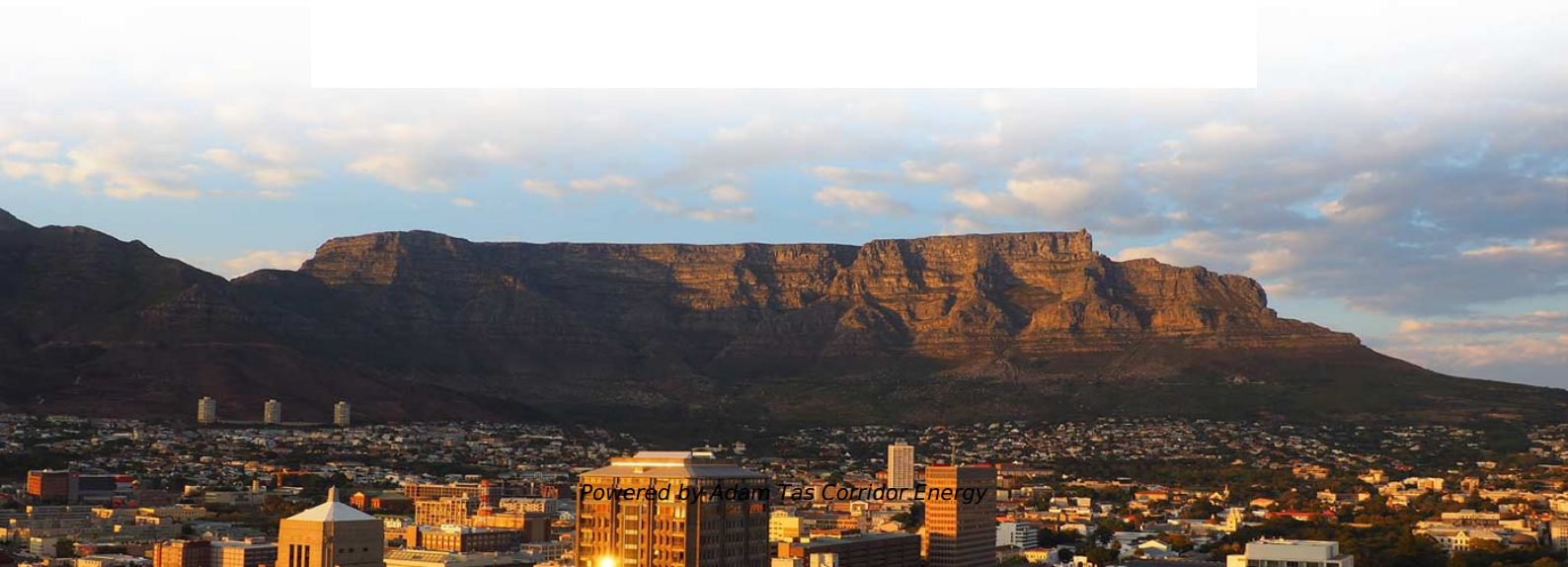




**Adam Tas Corridor Energy**

# **Is an indoor electrical distribution box necessary Is it safe**





## Overview

---

The best box keeps your electrical system safe and ready for changes later. Many experts say you should follow these steps: Make clear goals for your project. This heavy-duty cabinet secures components like MCB s, RCBO s, SPD s, and live copper busbars. The enclosure serves a critical dual purpose in every modern power network globally. It helps organize, protect, and control electrical connections in residential, commercial, and industrial electrical systems. It takes the incoming power and safely distributes it to different circuits throughout your building.



## Is an indoor electrical distribution box necessary Is it safe

---



### **DB BOX (Electrical Distribution Box): Everything You**

From low-voltage to high-voltage systems, and from indoor to outdoor installations, there is a suitable DB Box for every situation. At QINJIA Electric, we

### **Understanding Distribution Boxes: A Comprehensive Guide**

Learn what a distribution box is, its types, and how to choose the right one for your project. Includes clear examples and expert tips.



### **What Is an Electrical Distribution Box and Why Is It**

An electrical distribution box distributes power safely, prevents overloads, and protects circuits, ensuring efficient and reliable electrical systems.

### **Distribution Box: Comprehensive Guide on Types, Safety & Technology**

Explore the essential functions, types, safety



features, and technological advances of distribution boxes for efficient electrical power distribution.



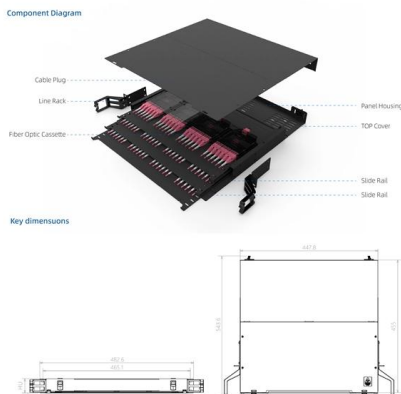
### How to Install a Cable Distribution Box Safely and

In modern electrical systems, cable distribution boxes (also known as electrical distribution boxes or distribution boxes) play a crucial role as the key



### Homeowners Ask: Are Junction Boxes Necessary?

Homeowners may ask, "Are junction boxes necessary?" Yes, they are! Electrical junction boxes play a critical safety role in a home's wiring system.



### Understanding Distribution Boxes: A Comprehensive Guide

A distribution box is a vital piece of equipment that ensures the effective and safe distribution of electrical power in various parts within a building



## How to confirm whether the installation location of the

The electrical distribution box plays a vital role in the power system. It is responsible for distributing electricity to various circuits and equipment.

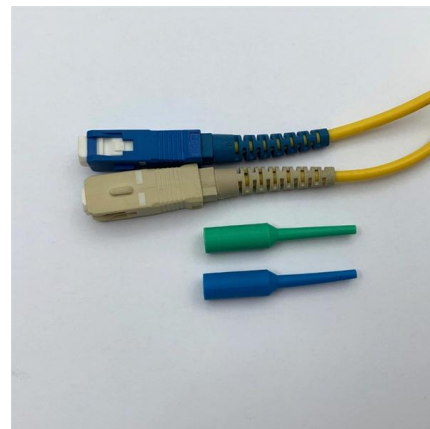


## The installation requirements for the distribution box

A clean and well-wired distribution box isn't just nice to look at -- it's essential for safety, performance, and easy maintenance. Here are a few best

## Distribution Boxes Explained: Types, Functions, and

A distribution box is essential for safely managing and controlling electrical circuits. It provides overload protection and ensures electricity is



## The Complete Guide to Distribution Box: Installation, Types & More

Quality distribution boxes represent a wise investment that pays dividends through improved safety, reduced maintenance costs, and enhanced system flexibility. As electrical demands



## How to Choose the Best Option for Indoor vs Outdoor

Choosing the right distribution box is essential for ensuring the safety and stability of your electrical system. Whether it's for indoor or outdoor use, the selection should



## What is a Distribution Box? - A Comprehensive Guide

A distribution box organizes and controls power flow, ensuring safety and efficiency in electrical systems.

## What is the Function of a Distribution Box in Electrical Systems

Understand the function of the distribution box in electrical systems and how it ensures safe and efficient power distribution.



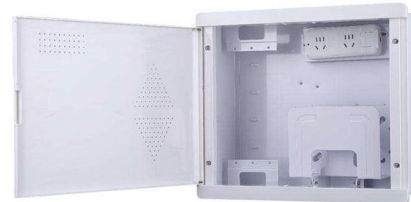


## Is It Safe to Live Near an Electrical Box? Unveiling the Truth

Living in a house close to an electrical box, also known as a power distribution box or transformer station, often raises concerns among homeowners regarding safety, health implications,

## Is a distribution box necessary? Sxpowercase

By ensuring safe and efficient power distribution, it protects your property, appliances, and loved ones from electrical hazards. Whether you're upgrading an existing system or planning a new



## What is an Electrical Distribution Box? A

In the world of electrical safety, distribution boxes are essential. They're the unsung heroes that keep your building's electrical flow organized,

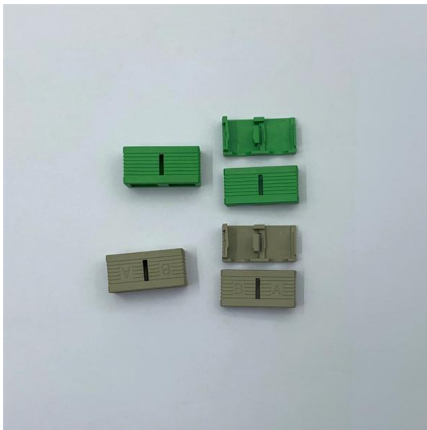
## Power Distribution Box Essentials: Functions, Types

We all know that electricity is the backbone of modern life. However, the problem may occur in its management. But there's a solution for every



## How to Choose the Right Electrical Box for Indoor and

Not all electrical boxes are built the same. This guide explains how to pick the right one for indoor walls, outdoor enclosures, and everything in between.



## How to Install a Distribution Box--A Comprehensive

Whether you are an electrical contractor or a construction brigade, knowing how to properly and safely install distribution boxes is the basis of



## Metal vs Plastic Electrical Distribution Box - Pros, Cons, and Best

Compare metal and plastic distribution boxes. Learn their pros, cons, and best applications to select the right enclosure for your electrical project.



## Choosing a suitable distribution box and what should be noted

You should pick a distribution box by thinking about your safety, what you need, and how much you can spend. The best box keeps your electrical system safe and ready for changes later.



## Guardians of Safety: A Comprehensive Guide to

Stringent electrical codes and regulations govern the design and installation of electrical boxes. This commitment to compliance ensures that power distribution

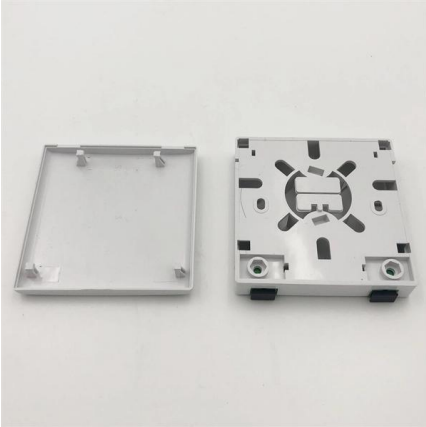
## Distribution box

Yet the distribution box is a highly complex component that not only ensures safe power distribution, but is also responsible for protection in an emergency. In this article, you will learn everything you need



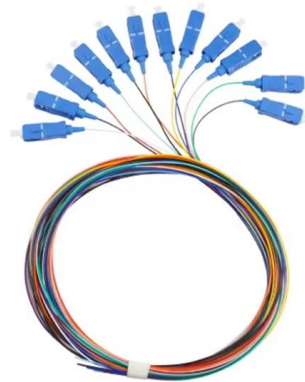
## Distribution Box Guide: Types, Components & Solutions

Distribution boxes are versatile and essential components in various electrical systems, providing safety, convenience, and efficiency. Their



### **Where is the best place to put a Electrical distribution box?**

Capacity Another key consideration when choosing the location for a Electrical distribution boxes is capacity. The box should be located in an area where it can accommodate the necessary



## **Contact Us**

---

For datasheets, pricing, or custom telecom energy solutions, please visit:  
<https://koskolong.co.za>