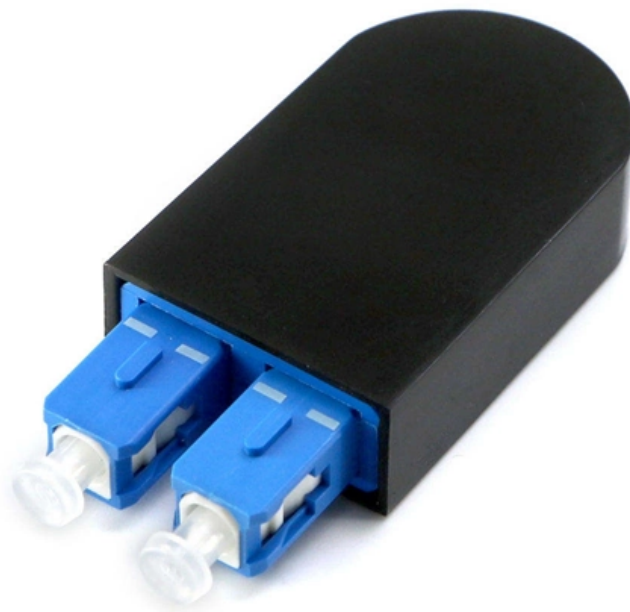




Adam Tas Corridor Energy

Is packet loss caused by the optical module





Overview

If so, this fault is typically caused by high insertion loss of the connector or the bending of the optical fiber. Packet loss describes the situation where a fragment of data transmitted across a network fails to reach its destination. There are multiple ways that optical modules fail in common ways that can interrupt network connectivity. The article Digital Diagnostic Function (DDM) For Optical Modules describes that DDM function can be used for real-time monitoring and fault location of the module's working status, in which the optical module's transmitting optical power and receiving optical power are the key parameters for. Most issues are not isolated but result from compatibility, environment, or improper operation.



Is packet loss caused by the optical module

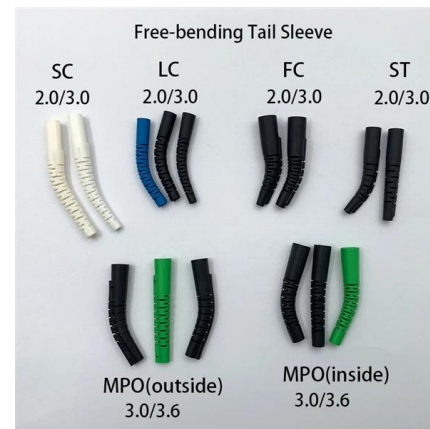


The Main Cause and Solution of Optical Transceiver

Customers will more or less encounter various failures when using optical transceivers, among which the more common failures are link failure and packet

What is High Packet Loss & How to Fix It

High packet loss is particularly concerning since it can severely impact the quality of VoIP calls, video conferencing, online gaming, and even



Fibre Optic Signal Loss and Attenuation

Ever wondered why your internet connection sometimes feels slower than expected, even with super-fast fiber optic cables? The answer often lies in



The Transmit Optical Power of an Optical Module Is Normal, But Packet

Symptom The display interface transceiver



verbose command output in the interface view shows that the transmit optical power of the optical module is normal. However, the display interface command



optical module Troubleshooting and Common Problems

An optical module is a critical component in modern optical communication systems, directly affecting transmission stability, network

Fiber loss

Cause Absorption Loss This is caused by the absorption of light by the optical fiber material itself. Optical fibers are mainly made of materials such as silica (SiO_2), and the silica material will absorb a



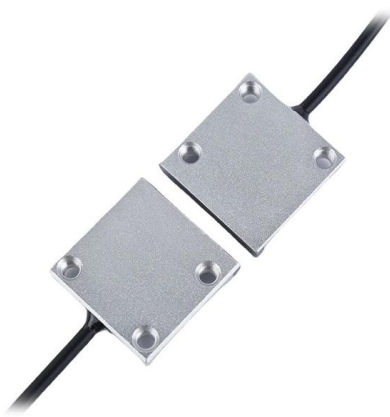
Understanding Packet Loss in Networks

Learn about packet loss, its causes, effects on network performance, and strategies for mitigation and prevention in computer networks.



Understanding Fiber-Optic Cable Signal Loss, Attenuation, and

To determine the power budget and power margin needed for fiber-optic connections, you need to understand how signal loss, attenuation, and dispersion affect transmission.



What Causes Fiber Optic Loss and How to Minimize It

Fiber optic loss, technically known as attenuation, describes the reduction in the optical power or signal strength as light travels from its source to the receiver. This power reduction occurs naturally along

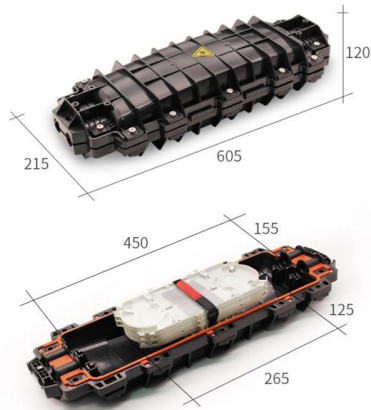
Fiber Insertion Loss and Return Loss: A Complete Guide

For example, if you directly test the power of an optical module with an optical power meter, you will get the optical power of the optical module. Then



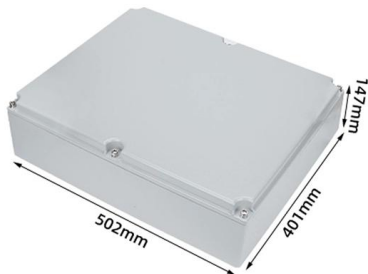
Common Causes of High Bit Error Rates and Packet

This article analyzes why bit errors and packet loss occur in optical links, covering physical and network layer issues as well as security risks, and provides a step



Understanding Fiber-Optic Cable Signal Loss, Attenuation, and

To determine the power budget and power margin needed for fiber-optic connections, you need to understand how signal loss, attenuation, and dispersion affect transmission. The uses

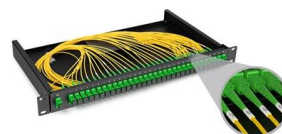


Optical Module Failure Diagnosis and Prevention:

These optical modules ultimately expressed themselves with an initial symptom associated with snap link drops and high packet loss. The issue often

What is Packet Loss? How to Fix It? , Fortinet

When a packet fails to travel between the router and the device this is called packet loss. Discover the causes of packet loss and how to fix them.





Optical Module Common Failure Of Optical Power

Impact: It may lead to low optical power received at the opposite end, which may cause packet loss or the port cannot be LINK UP.

Fiber-Optic Cable Signal Loss, Attenuation, and Dispersion , Juniper

Attenuation and Dispersion in Fiber-Optic Cable
Correct functioning of an optical data link depends on modulated light reaching the receiver with enough power to be demodulated correctly. Attenuation is



Understanding Signal Attenuation in Fiber Optics and

Attenuation in optical transceivers weakens signals. Manage loss by checking cables, cleaning connectors, and using proper fiber tools.

Optical fiber transmission loss causes and solutions

A brief introduction of optical fiber transmission loss The optical fiber is a technology that uses glass as a waveguide to transmit information from one end to the other



Network Packet Loss: One Article Sufficient for Network

As the name suggests, network packet loss refers to the situation where some data packets fail to successfully transmit from the source address to



How To Fix Packet Loss & Know When It's a Problem

Packet loss is a critical network performance metric, which should never happen at any one time on your network. We're going to look at what



WebiTelecomms Cabling

Understanding Signal Losses in Fiber Optic

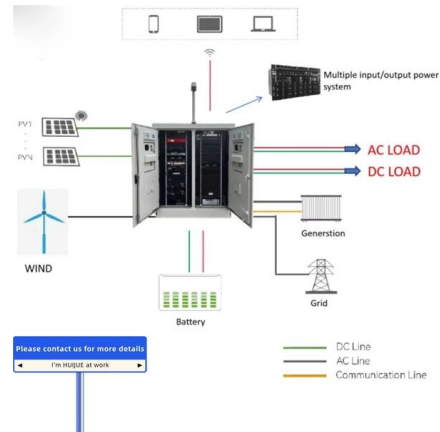
Explore the causes of signal losses in fiber optic communication, including absorption losses and scattering losses. Learn how these losses impact signal





Summary of common problems in the use of optical modules

B, the use of fiber optic connector end face has been contaminated or the use of poor-quality fiber optic connectors, optical module optical port secondary pollution; poor-quality optical



Common fault solutions for optical fiber modules

While optical fiber modules are designed to be reliable and durable, they can still experience faults and failures. In this article, we will explore some of the most common faults in optical fiber

The Transmit Optical Power of an Optical Module Is Normal, But

If so, this fault is typically caused by high insertion loss of the connector or the bending of the optical fiber. If the fault persists, replace the optical module to check whether the fault is caused by the



What Causes Packet Loss How to Reduce It , Preseem

A look at what causes packet loss and its effects on network performance, data quality in real-time applications, and the subscriber quality of



Demystifying Optical Transceiver Failures: Common

Excessive Link Loss and Fiber Issues (The Path is Blocked) The Problem: While not always the transceiver's fault, the optical link loss exceeds the



What Is Packet Loss? (And How to Test for It)

What Causes Packet Loss? Much of the time, packet loss is caused by factors outside of your control. This could be due to problems with services

Optical Module Failure Diagnosis and Prevention:

The packet loss, as a result of all outstanding faults previously attributed to optical networking issues, decreased by 80 percent. After testing, the





Contact Us

For datasheets, pricing, or custom telecom energy solutions, please visit:
<https://koskolong.co.za>