



Adam Tas Corridor Energy

Itut Optical Cable Testing Standards





Overview

This article introduces and explains the scope, application, and practical relevance of the eight most widely used fiber and optical cable standards: ITU-T G. Fiber optic networks rely on a foundation of rigorous international standards that define. - refers to single-mode optical fibre cables installed by pulling method to be used for telecommunication networks in ducts and tunnels; - recommends that optical fibre dimensional and transmission characteristics, together with their test methods, should comply with one or more of [ITU-T G.



Itut Optical Cable Testing Standards



Handbook Optical fibres, cables and systems

The first ITU-T Handbook related to optical fibres, Optical Fibres for Telecommunications, was published in 1984, and several others have been produced over the years. It is an honour to present you with

ITU-T standards For Fiber Optic Cable

What are the ITU-T standard types for optical fibers? What are the similarities and differences among them? ITU-T standards, also known as ITU-T Recommendations, describe the



Recommendation ITU-T G Suppl. 47 (03/2025)

Supplement 47 to ITU-T G-series Recommendations provides information on the general transmission characteristics of single-mode optical fibres and cables specified in the ITU-T G.65x-series of

Fiber Optic & Cable Standards Guide , FiberMania

Fiber optic networks are built on well-defined standards that ensure quality, performance, and



interoperability. This article explains eight of the most

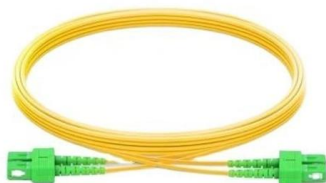


ITU-T L.100/L.10 (05/21) Optical fibre cables for duct and tunnel ap

Recommendation ITU-T L.100/L.10 describes characteristics, construction, test methods and performance criteria of optical fibre cables installed by pulling method for duct and tunnel

Major Recommendations: Optical

These standards provide attributes and values for optical fibres and cables which are needed to support: Network applications such as those recommended in Recommendation ITU-T G.957 up to 2.5 Gbit/s



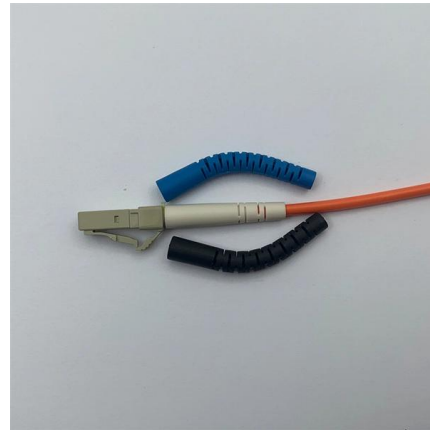
Optical technologies

This ITU-T Technology Watch Report provides an overview of the optical world and surveys standards and ongoing research work which will lead to a new



Summary

It also contains information used in the development of test method Recommendations such as Recommendations ITU-T G.650.1, ITU-T G.650.2 and ITU-T G.650.3. Moreover, this Supplement



Recommendation ITU-T G Suppl. 47 (03/2025)

General aspects of optical fibres and cables
Summary Supplement 47 to ITU-T G-series Recommendations provides information on the general transmission characteristics of single-mode

G.hn

G.hn was developed under the International Telecommunication Union 's Telecommunication Standardization sector (the ITU-T) and promoted by the HomeGrid Forum and several other



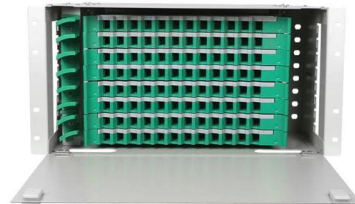
Table of contents

1 Scope 2 References 3 Definitions 4 Abbreviations and acronyms 5 Conventions 6 ITU-T G.65x-series Recommendations 7 Features of existing optical fibre categories and their application areas 7.1



ITU-T Standards for Various Optical Fibers

ITU-T standards, also known as ITU-T Recommendations, describe the geometrical properties and transmissive properties of multimode and single

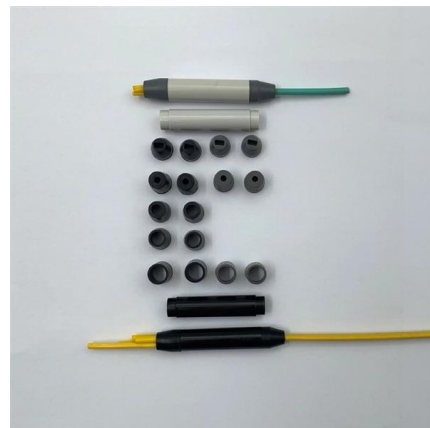


ITU-T Recommendations for Optical Fibers and Cables

Engineering Knowledge Base Glossaries, troubleshooting guides, optical formulas, 80+ infographics, and ITU-T standards references.

Fiber Optic & Cable Standards Guide , FiberMania

This article explains eight of the most important global fiber and cable standards -- ITU-T, IEC, TIA, ISO/IEC, and Telcordia -- covering their scope,



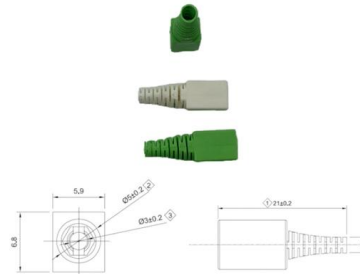


FS Community

Hier sollte eine Beschreibung angezeigt werden, diese Seite lässt dies jedoch nicht zu.

Recommendation ITU-T L.100 (01/2024)

This document provides comprehensive guidelines for single-mode optical fiber cables installed via the pulling method in ducts and tunnels, primarily for

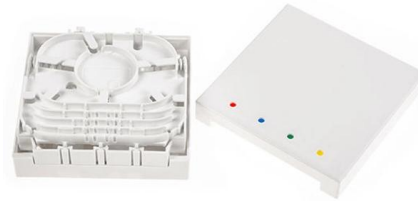


ITU-T Standards for Various Optical Fibers

ITU-T standards, also known as ITU-T Recommendations, describe the geometrical properties and transmissive properties of multimode and single-mode fiber optic cables.

Modem

The G.hn standard for instance, developed by ITU-T, provides a high-speed (up to 1 Gbit/s) local area network using existing home wiring (power lines, phone lines,



Cabling Standards - Fibertel Systems

Technology Cabling Standards ITU-T Recommendations: ITU-T G.650.1 and 650.2 - definitions and test methods for linear, deterministic attributes of single-mode fibers and cables. ITU-T G.651.1 -

Recent Standardization Activities in ITU-T on Single-mode Optical

The revision of these Recommendations are active topics in ITU-T due to the capacity growth in terrestrial and submarine optical fiber networks. In the next section, recent activities for revising these



Rear of the optical fiber distribution box



ITU iLibrary , Optical Fibres, Cables and Systems

The Handbook is intended as a guide for technologists, middle-level management, as well as regulators, to assist in the practical installation of optical fibre-based systems.



Passive optical network

Passive optical networks were first proposed by British Telecommunications in 1987. Two major standard groups, the Institute of Electrical and Electronics



ITU-T Rec. Technical Paper (04/2021) LSTP-GLSR Guide on the use of ITU

Summary ITU-T Technical Report "Guide on the use of ITU-T L-series Recommendations related to optical technologies for outside plant" provides information on the background, development and

ITU-T Rec. Series G Supplement 59 (02/2018) Guidance on optical

Guidance on optical fibre and cable reliability Summary Supplement 59 to ITU-T G-series Recommendations provides guidance regarding the long-term reliability of cabled optical fibres. This



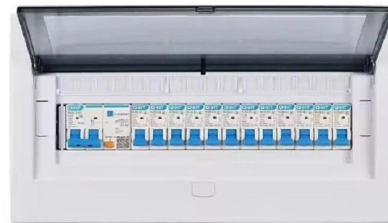
ITU-T L.100/L.10 (05/21) Optical fibre cables for duct and tunnel ap

Abstract Recommendation ITU-T L.100/L.10 describes characteristics, construction, test methods and performance criteria of optical fibre cables installed by pulling method for duct and



ITU-T

This part of IEC 60331 specifies the test procedure, and gives the performance requirement, including a recommended flame application time, for optical fibre cables required to maintain circuit



LoRawan outdoor base station

- * Industrial Internet gateway
- * Compatible with LoRaWAN network,
- * ClassA/B/C mode
- * Support 8/16 channel
- * Supports PoE power
- * supply and backup battery power supply
- * 10KV lightning protection



ITU-T Rec. L.163 (11/2018) Criteria for optical fibre cable

Recommendation ITU-T L.163 describes criteria for the installation of optical fibre cables defined in Recommendation ITU-T L.110 in remote areas with lack of usual infrastructure for installation

Contact Us

For datasheets, pricing, or custom telecom energy solutions, please visit:
<https://koskolong.co.za>