



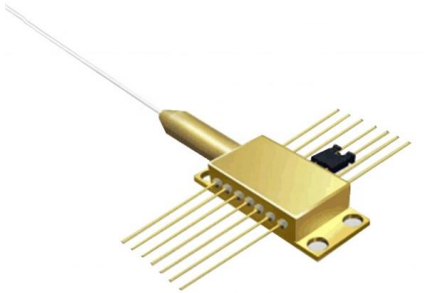
Adam Tas Corridor Energy

Jamaica debugging of 12-pin cold connector





Jamaica debugging of 12-pin cold connector



JTAG Connector Pinout Guide

JTAG Connectors and Pinout - Free download as PDF File (.pdf), Text File (.txt) or read online for free. This document discusses JTAG connection methods used by

RJ12 Connector Pinout Diagram: Understand the Wiring

This intricate interplay of pins requires precise wiring to ensure a seamless connection between devices. Understanding the pinout diagram of the RJ12



JTAG Interface Connector Pinout : DebugJet

This page describes the JTAG interface connector pin-outs for the ARM and PowerPC processors used by DebugJet. These connectors can be used for

12 Pin Diagram » Wiring Diagram & Schematic

Wiring a 12 Pin Diagram The wiring process for a 12 pin diagram is fairly straightforward. Wires



are used to physically connect each of the pins on the



Using TM4C12x Devices Over JTAG Interface

It also shows how to use the JTAG interface on the TM4C12x LaunchPad™ for debugging the on-board microcontroller using an external debugger, or by using the on-board debugger for debugging an off

JTAG Connectors and Pinout

Pinout Part numbers for connectors and headers are at the bottom of the table and at section Connector Information. For the TI 60 pin connector and the MIPI 60 pin connector, please check the Emulation



JTAG & SWD Pinout Guide: ARM 10-pin, 20-pin, ST

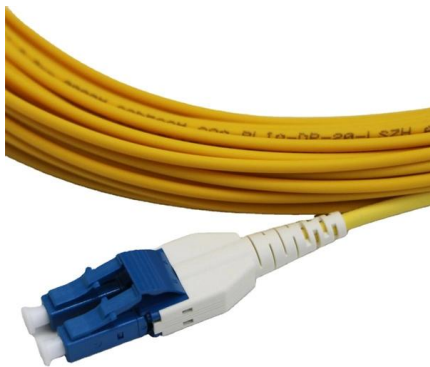
Find JTAG and SWD pinouts for common debug headers and probes. Compare ARM 10-pin, 20-pin, ST-Link, J-Link, Tag-Connect, and more.





Design Considerations for Debug

Debug related signals and considerations JTAG was the traditional mechanism for debug connections for ARM7/9 parts, but with the Cortex-M



Using TM4C12x Devices Over JTAG Interface

This application report describes the physical connections for JTAG and design considerations to be taken into account for a custom board. It also shows how to use the JTAG interface on the TM4C12x

J-Link/J-Trace User's Guide: Connectors

Several target connectors can be installed on the circuit board to access an ARM target system. You can physically plug in units, such as J-Link or J-Trace, to



WebiTelecomms Cabling

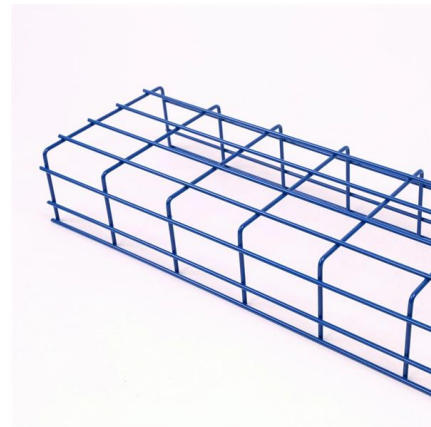
Plug For Jamaica: What You Need To Know

What is the plug for Jamaica? Understand the electrical outlets, their types, voltage, and figure out if you need an adapter.



Cortex-M Debug Connectors

The Cortex Debug+ETM Connector supports JTAG debug, Serial-Wire debug, Serial Wire Viewer (via SWO connection when Serial Wire debug mode is used) and instruction trace operations.



Selecting a Debug/Programming Connector for

Choosing a debug/programming connector for a microcontroller TL;DR abstract: for ARM SWD, TI Spy-Bi-Wire, or Microchip ICD, use the Tag-Connect No-Legs

12 Pin Round Connector Pinout

The 12 pin circular connector exhibits remarkable adaptability and compatibility, making it compatible with a wide range of applications across diverse industries.





Arm JTAG Interface Specifications

Signals. Layout Considerations SRST- versus TRST- Debugging from the very beginning Debugging a reset event Hot Plug-in The JTAG connector of the debug cable is not suitable for hot plug-in. Connect GND and VTREF first and then the JTAG connector. Otherwise glitches might happen due to the connection of all of the uncharged signals which could e.g. reset the device. To solve this challenge a special adapter might be required which connects ground of the debugger and See more on

J-Link/J-Trace User's Guide: Connectors - Keil

Several target connectors can be installed on the circuit board to access an ARM target system. You can physically plug in units, such as J-Link or J-Trace, to

JTAG 101 - Part 1: Overview and On-Chip Debug Methods

The type of debugging we will be discussing is sometimes known as "BDM debugging" even though it may use a JTAG port. For clarity, it will be



JTAG

JTAG (named after the Joint Test Action Group which codified it) is an industry standard for verifying designs of and testing printed circuit boards after manufacture. JTAG implements standards for on



HangTon Ethernet Power Debugging Cable for DJI Livox Mid-360

Cable for your image processing system sensor camera encoder reader with M12 12 pin A-coded connector to pass power, Ethernet network, function. Extension cable. 24AWG cable with



20-pin J-Link Connector

J-Link will also work if this pin is not connected, but you may experience some limitations when debugging. TRST should be separate from the

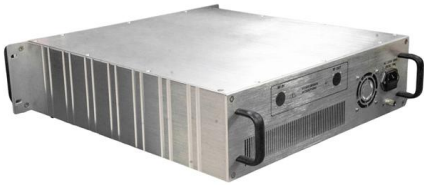
JTAG Connector PinOut Diagram (with different Interfaces)

The JTAG connector typically consists of multiple pins or contacts arranged in a specific pattern. Here in this article, we are going to see PinOut Diagrams of



12 Pin Connector, High-Quality, Versatile Solutions-Johoty

12 pin connector has 12 pogo pins with perfect consistency and low contact resistance. It adopts high-strength gold plating, corrosion &



WORLD WIDE WEB JOURNAL Home

O'Reilly & Associates, Inc. 103A Morris St.
Sebastopol, CA United States



3.4.1 Debug JTAG

This section describes the signals and connectors related to the JTAG interface. A 10-pin JTAG header is provided on the baseboard to facilitate software development and debugging using various JTAG

3.4.1 Debug JTAG

This section describes the signals and connectors related to the JTAG interface. A 10-pin JTAG header is provided on the baseboard to facilitate software development and debugging using various JTAG





Pin Mapping

Any pin apart from the fixed GND pins can be allocated to a JTAG signal or to another input or output function. In this section of the user guide, we shall deal just with those aspects of pin mapping

Contact Us

For datasheets, pricing, or custom telecom energy solutions, please visit:
<https://koskolong.co.za>