



**Adam Tas Corridor Energy**

# **Key Performance Indicators of Single-Mode Fiber**





## Overview

---

Single-mode fiber optic cables have a core diameter of about  $9\mu\text{m}$ , operate at wavelengths like 1310nm or 1550nm, deliver very low attenuation, and support long-distance transmissions without losing signal quality.

INTRODUCTION Optical Fiber is new medium, in which information (voice, Data or Video) is transmitted through a glass or plastic fiber, in the form of light. The field of applied science and engineering concerned with the design and application of optical fibers is known as fiber optics. This comprehensive guide explores Single-Mode Fiber Optic Cable, covering technical specifications, deployment scenarios, and best practices to help you optimize your fiber infrastructure for maximum performance and reliability. The core has a higher refractive index than the cladding, causing the light signal to be reflected back into the.



## Key Performance Indicators of Single-Mode Fiber

---



### Understanding Single Mode Fiber: Benefits,

Single mode fiber type is an essential component of modern communication networks and infrastructure. It is a type of fiber optic cable that

### Singlemode vs Multimode Fiber Optic Cable

We breakdown the differences between single mode and multimode fiber optic cable, covering aspects like physical structure, bandwidth over



### Performance Evaluation of Single Mode Fiber Optics for Long

In this paper the simulation is a computer model of a single mode optical fiber link system, includes attenuation function, dispersion function, nonlinear effective function, and propagation function.

### Single-Mode Fibers

Single-mode optical fibers are a key component in modern telecommunications, enabling high-speed data transmission over long distances.



This article explores



## Single Mode vs Multimode Fiber, What is The

Learn the key differences between single mode vs multimode fiber cables and choose the right one for your fiber optic system.



## Exploring the Intricacies of Single-Mode Fiber Optic Cable

Discover ascentoptics' guide to single-mode fiber optic cables. Explore key insights and optimize your network's performance today!



## Comparative Performance Analysis of Single Mode Fiber over

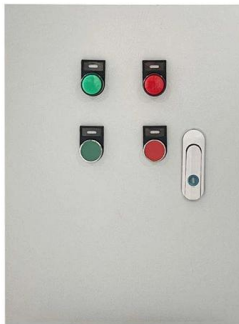
Abstract-- Single mode optical fibers have already been one of the major transmission media for long distance telecommunication, with very low losses and high bandwidth. The most important properties





## Single-Mode Fiber-Optic Cabling:

Explore the high-speed world of single-mode fiber-optic cabling, where data travels on beams of light, offering unparalleled efficiency.



## Single Mode vs Multimode Fiber: Key Differences

Single mode vs multimode fiber explained. Learn differences, speeds, distances, and which is best for your network needs.

## Single-mode Fibers

Single-mode fibers support only one guided mode per polarization direction, ensuring a constant output beam profile.



## What Is Single Mode Fiber and How Does It Work

Single mode fiber uses a small core to transmit one light path, enabling high-speed, long-distance data with minimal signal loss and low dispersion.



### **(PDF) Performance analysis of single mode optical fiber**

The role of the mode field diameter in the characterization of single-mode fibers is examined. The most relevant definitions of this parameter are

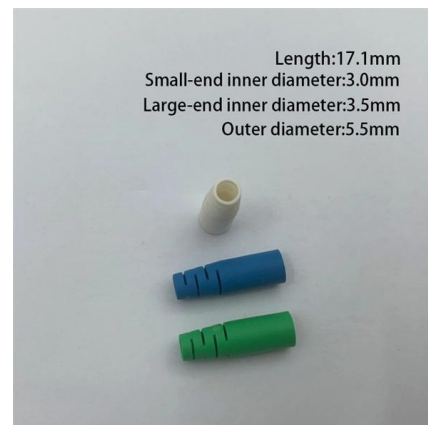


### **Single-Mode vs. Multi-Mode Fiber: Key Differences**

Discover the key differences between single-mode and multi-mode fiber. Compare speed, distance, and cost to choose the right fiber optic solution

### **The Essential Guide to Single Mode Fiber Cables**

Discover how single mode fiber cables are the modern telecommunications, enabling the reliable transmission of data across vast



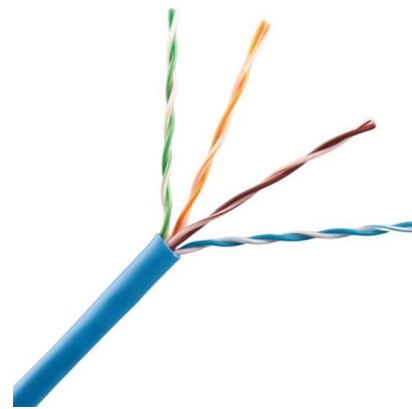


## Single-Mode Fiber Cable Guide: Types, Specs & Selection

This comprehensive guide explores Single-Mode Fiber Optic Cable, covering technical specifications, deployment scenarios, and best practices to help you optimize your fiber infrastructure

## Introduction to Single-Mode Fiber , White Paper

This white paper addresses some prevailing preconceived notions about single-mode fiber and provides guidance for single-mode testing, cleaning, and inspecting.



## Single Mode vs. Multimode Fiber: Key Differences and

Discover the key differences between single mode and multimode fiber optic cables, including core size, bandwidth, distance, and cost. Learn how to

## Optical Performance Analysis of Single-Mode Fiber Connections

conventional optical performance analyses of SMF connections. The two important parameters for the optical performance of fiber connections are insertion loss and return loss. The insertion loss in dB is



## Everything You Need to Know About Single Mode Fiber

Single mode fiber explained: find out how it works, why it's ideal for high-speed connections, and what sets it apart from other fiber optic cables.



## The Ultimate Guide to Single Mode Fiber

In this comprehensive guide, we will explore the principles, characteristics, and applications of single mode fiber, as well as best practices for designing and implementing single mode fiber networks.



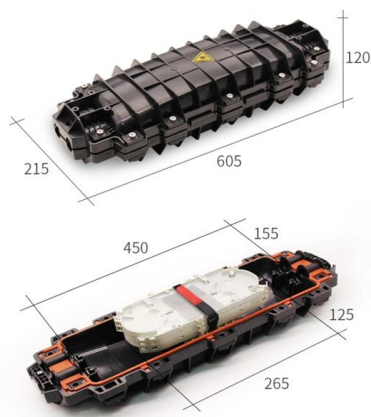
## What are the key specifications of single-mode fiber

Explore the essential specifications of single-mode fiber optic cables, including core size, attenuation rates, bandwidth capabilities, and standard



## What are the Key Performance Indicators of MTP/MPO

Selecting an MTP/MPO fiber cable involves a deep understanding of these KPIs and their relevance to your network's performance and scalability.



## Single-Mode vs. Multimode Fiber Cable: A Direct

Explore the difference between single-mode and multimode fiber cables. Make an informed decision for optimal communication with our in-depth comparison. [Fiber](#)

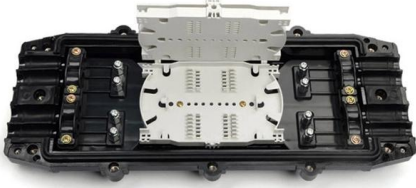
## Key performance indicators for Gigabit fiber-optic patch cord

Therefore, the 16G data rate Ethernet are most likely using OM3 fiber parallel optical technology to achieve short-range transmission of up to 100-300 m. 50/125 micron fiber patch cord optimized, high



## Single Mode Fibers

Single-mode fibre (also referred to as fundamental or mono-mode fibre) will permit only one mode to propagate and, as such, cannot suffer mode delay differences.



## Contact Us

---

For datasheets, pricing, or custom telecom energy solutions, please visit:  
<https://koskolong.co.za>