



**Adam Tas Corridor Energy**

# **Key points for controlling cable laying along cable trays**





## Overview

---

Installation of Cable in Cable Trays involves precise routing on support systems, NEC/IEC compliance, grounding, ampacity derating, bend radius control, segregation of services, fire safety, labeling, and reliable cable management for industrial and commercial. Let's take a closer look at the significance of managing cables in cable trays, the fundamental principles, methods, and steps required for effective implementation, as well as a case study of a successful cable management implementation. In industrial settings, electrical and instrumentation (E&I) cable trays or bridge racks play a critical role in organizing and supporting power, control, and signal cables across facilities. An effective layout ensures safety, minimizes interference, reduces maintenance time, and keeps the overall. Cable ladder systems and cable tray systems shall be manufactured in accordance with BS EN 61537, channel support.



## Key points for controlling cable laying along cable trays

---



### **Cable Tray Technical Guide A practical guide to product selection and**

Cable Tray Technical Guide A practical guide to product selection and installation This guide for engineers and installers has been developed by ABB as a practical reference regarding cable tray

### **Cable routing , Tips for proper cabling , Simply explained**

Cable trays are perforated or unperforated metal or plastic channels that are often used for laying and protecting cables. The channels are installed along walls or



### **Cable Pathways and Routing: Best Practices for**

Learn best practices for cable routing, cable management, and choosing the right cable pathways, trays, and conduits for efficient data center

### **Cable Tray Technical Guide A practical guide to product selection and**

In designing supports for a cable tray system,



consideration should be given to the loads associated with future cable additions and any additional loading that may be applied to the cable tray system (e.g.,



### **Instrumentation Cable Tray Installation Checklist and**

Step-by-step instrumentation cable tray installation guide with safety tips, standards, inspections, and downloadable Excel checklist.

### **FactSheet**

Overloading cable trays can lead to a breakdown of the tray, its connecting points, and/or supports, causing hazards to persons underneath the cable tray and even leading to possible electric shock



### **Technical Guidelines for Cable Tray Installation and**

Cable tray installation must comply with specific technical standards to ensure electrical safety, system reliability, and long-term maintainability. This document



## Best Practice Guide to Cable Ladder and Cable Tray Systems

This guide covers cable ladder systems, cable tray systems, channel support systems and associated supports intended for the support and accommodation of cables and possibly other electrical



## Best practice guide to cable ladder and cable tray

The following recommendations are intended to be a practical

## Cable Tray Systems: Requirements and Best Practices

This article explains the main requirements and good practices for cable tray systems, including tray types, materials, loading, supports, bonding, cable selection, and installation details.



## Best Practices for Cable Laying by EVIO

Laying cables correctly is pivotal in ensuring the longevity and reliability of an electrical installations. In this blog post, we'll walk through the



## Cable Tray Installation

Learn everything about cable tray installation with our complete guide. Discover types, steps, and safety tips for efficient electrical cable management.



## Cable Tray Installation and Maintenance Considerations

I get it. Getting cable trays set up right and keeping them in good shape is vital. It stops issues, keeps things working, and saves you money over time.

## Cable Tray Systems: Requirements and Best Practices

Comprehensive guide to cable tray systems requirements: tray types, materials, loading, supports, bonding, routing, and best practices for safe electrical cable management.





## Using IEC Standards in Cable Tray and Conduit System

Cable tray and conduit system planning is a vital aspect of modern electrical infrastructure. In industrial plants, commercial buildings, and utility

## Best Practices for Installing Cables in Trays

Quick Installation Checklist (Key Steps) Cable tray cable installation generally follows these steps: Inspect cables before



## Inspection Methods for Cable Trays: A Comprehensive

Cable trays play a crucial role in ensuring the safety and efficiency of electrical and communication systems. With their responsibility to manage cables

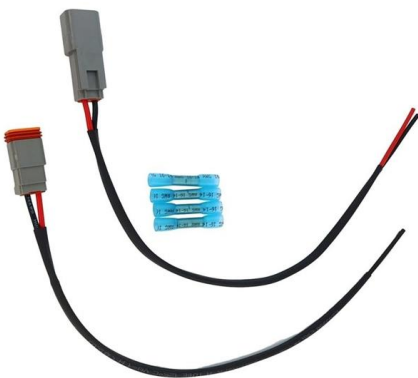
## Cable Tray Installation and Cable Handling Method

3. Cable Tray Support Locations Cable tray supports should be strategically positioned so that connectors between horizontal straight sections of the tray fall



## Mastering Cable Tray Installation , Step-by-Step Guide for a Seamless

Learn how to install cable trays correctly. Get the ultimate step-by-step guide on setting up a seamless and reliable cable management system.



## Cable Tray Design, Layout, and Overall Wiring Planning

Learn about effective Cable Tray Design and Layout for electrical systems. Our guide covers planning, material choice, safety,



## A Guide to Installing and Supporting Electrical Cable Trays

A professional guide to installing electrical cable tray systems per NEC Article 392. Covers support, securing cables, and fill calculations.





## Fundamentals of Cable Management: Best Practices

Discover the importance of cable management in network infrastructure, explore the components and principles of effective cable



## Cable Laying Method Statement

The document provides guidelines for cable laying in various areas of a plant. It outlines procedures for checking cable routes and trays, laying cables in trays

## Installation Of Cable In Cable Trays: NEC, Safety

Cable tray layout must take into consideration the design limits of the cable. To minimize damage and verify integrity after installation, follow the practices



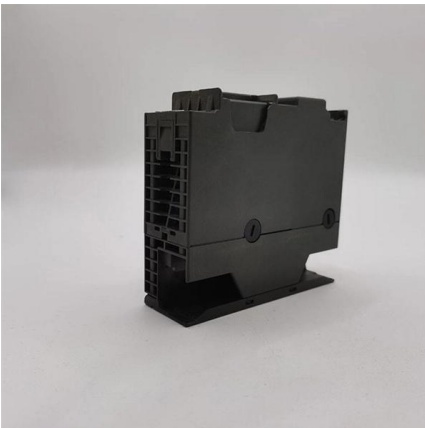
## Core Principles for Electrical and Instrumentation Cable

**Straightforward Pathways:** Cable trays should follow the shortest practical route between equipment, minimizing the need for unnecessary bends and junctions.



## Cable Laying Standards: A Comprehensive Guide for

Cable laying standards are essential to ensure the safety, stability, and longevity of cable systems in industrial and infrastructure projects. This guide outlines key



## How to Manage Cables in Cable Trays: Principles and Methods

Learn how to manage cables in cable trays effectively with our comprehensive guide for cable classification, protection, and installation to ensure electrical system safety and efficiency.

## Contact Us

---

For datasheets, pricing, or custom telecom energy solutions, please visit:  
<https://koskolong.co.za>