



Adam Tas Corridor Energy

Lao household electrical distribution box configuration requirements





Lao household electrical distribution box configuration requirement

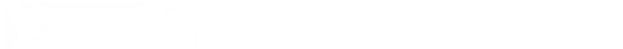


Laos promulgates regulations to control safety of consumer electric

The decision prescribes the principle, rules, and measures regarding the management, quality inspection, and certification for the safety of electrical and electronic equipment that are

World Bank Document

The physical installations of meters, power distribution equipment, communication links, computing hardware, testing equipment are expected to be done on existing power poles, power lines, and



National Standard for Plugs and socket

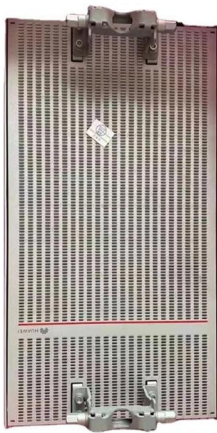
Plugs and socket - outlets for household and similar purposes - Part1: Particular requirements for switched socket - outlets with interlock for fixed electrical installations. This National Standard and its

Microsoft Word

The transmission of electricity through the Lao People's Democratic Republic shall be conducted via the national electricity transmission grid with



payment of a service fee, unless the Lao People's



Lao Electric Power Technical Standards

Lao Electric Power Technical Standards for electricity activities: planning, design, construction, operation, generation, transmission, distribution.

Microsoft Word

Electricity distribution refers to the distribution, by means of a high, medium or low power system, of electricity from the transmission system or from the electricity generating equipment to various types



Lighting and Appliances Market Study and Assessment Report

The household surveys conducted by the MECON project is directly relevant to the scope of the lighting and appliance market study and assessment under the GCF project, as it discussed households'



Lao PDR's Power Sector Development and Planning

05 Promote electricity exportation across GMS countries to achieve under MOU that was signed and the ASEAN Power Grid especially Lao-Thai-Malaysia-Singapore (LTMS) project 06 Promote the use of



Brief Introduction To The Requirements Of Distribution Box

The distribution box device is the low-voltage terminal responsible for completing the system power control, protection, and distribution device conversion. The power

Distribution Design Parameters Overview , PDF

Distribution Design Parameters Overview. This document provides design parameters for Electricité du Laos' distribution systems. It outlines standard





Asia Pacific Energy Portal

(aeÚÚÚÚÚ3) (ayÚÚÚÚÚ9 Û 2015) tmoaÛI VI 67 â l, 06/awa, 09 2017 (ayÚuđuU3); ayÚucantn 011/ûU9, ô6J5ijtñ 07 2017.



A Resilient Power System and Power Market in Lao PDR

To supply domestic demand and to export to neighbouring countries the electricity surplus generated in Lao PDR, IPPs should be able to transmit electricity domestically and to neighbouring countries by



Data Collection Survey On Improvement Of Power System Operation

Therefore, at the planning stage, it is only necessary to roughly confirm whether it is possible to secure the supply capacity to meet the expected domestic demand in Laos, and it is considered difficult to

Lao Electric Power Technical Standards

The insulation strength of a high-voltage and medium-voltage electrical circuit shall be decided by an appropriate combination of the withstand voltage test, the



CDM: Household appliance distribution in Lao PDR - CPA003

CPA 10030-P1-0003-CP1 : Household appliance distribution in Lao PDR - CPA003

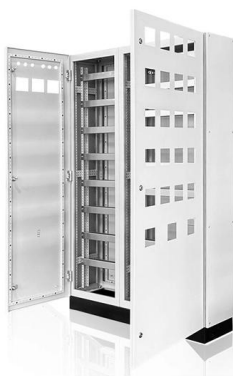
Distribution Box and Selection Guide

The nature of your property plays a crucial role in determining the appropriate Distribution Box. Different settings have distinct electrical



A Resilient Power System and Power Market in Lao PDR

Thus, electricity generated in Lao PDR can be supplied domestically as well as exported to neighbouring countries. The power transmission system of Lao PDR is divided into two types of transmission lines





Requirements And Specifications For Installation Of

In flammable and explosive environments, explosion-proof distribution boxes should be selected and explosion-proof treatment should be carried out.

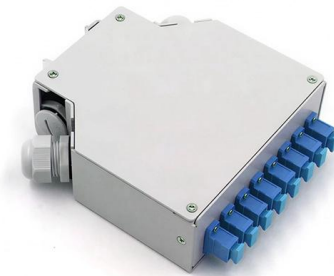


Law on Electricity (2017 Ed.) , ESCAP Policy Documents Management

The Law on Electricity (2017 Ed.) establishes specific standards in the administration, transmission, distribution and trade of electricity in line with the national social and economic growth of the Lao

Lao Electric Power Technical Standards

Lao Electric Power Technical Standards - Free download as PDF File (.pdf) or view presentation slides online.



Microsoft Word

Article 11. Licensing of Electricity Enterprise Persons or organizations who wish to engage in electricity enterprise such as production, transmission, distribution, exports, imports, or development of



SSA: Lao PDR: Country Partnership Strategy 2012-2016

Sector Development Challenges and Opportunities Increase electrification. The highest priority of the Government of the Lao People's Democratic Republic is to rapidly provide access to electricity to all



1 Introduction

Some segments of the transmission network utilise shieldwire(s) insulated from ground to afford a local distribution supply. Because of the particular insulation co-ordination requirements of the shieldwire

Laos Voltage and Power Plug Guide

Do you need a voltage converter for Laos? Laos's voltage standards may differ from your device requirements. For devices not supporting wide voltage ranges, we





How to Install a Distribution Box in Singapore?

The installation of a distribution box allows you to manage the distribution of electricity throughout your home or commercial space effectively. Given the rising

LAO PEOPLE'S DEMOCRATIC REPUBLIC PEACE INDEPENDENCE

Physical sources of electrical energy throughout the Lao People's Democratic Republic are the property of the national community that the State administers, preserves, and conservatively uses on a long



How to Choose a House Distribution Box , CHINT

A well-chosen distribution box ensures the safety and efficiency of your household electrical system. This article guides you through selecting a



Microsoft Word

Must be able to supply the electricity enough with the requirement in the building. Must have the system and reserved electrical supply rate. Must indicate the technical specification of objects, tools by



Contact Us

For datasheets, pricing, or custom telecom energy solutions, please visit:
<https://koskolong.co.za>