



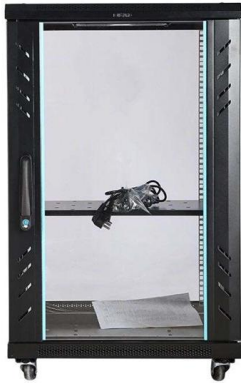
Adam Tas Corridor Energy

Large Core Switches





Large Core Switches



Core Switch vs Access Switch , Definitions and Key Differences

Core Switch vs Access Switch The core switch is used in the center of your network, while an access switch is placed on its edge. The main difference between these two kinds of hardware is

Understanding the Core Switch: Key Differences and Uses

Explore the core switch's role as the backbone of your network. Discover key differences, uses, and insights into layer 3 core switch technology.



UniFi Switching

From PoE-powered compact switches to 100G Campus Core models, UniFi offers a full range of switches--all centrally managed in UniFi without licensing fees.

Core Switches and Normal Switches: A Practical

These switches operate at the core layer, connecting distribution layers and providing



robust redundancy and fault tolerance. They are typically deployed



Best Core Switches for 2026 Enterprise Networks

Discover the best core switches for 2026 enterprise networks. Explore top-rated data center and modular options, key trends like 400G/800GbE, and expert recommendations.

CloudEngine 12800 Series Data Center Core Switches

The CloudEngine 12800 (CE12800) series switches are next-generation, high-performance core switches designed for data center networks and high-end campus networks.



What is Core Switch and How to Choose?

Discover what a core switch is and learn how to choose the right one for your network. Explore key features in selecting a core layer switch. Make



Best Enterprise Switches 2025: Top 5 Network Switches

This is not another surface-level review. This is a technical deep dive into the premier enterprise network switches defining 2025. We move beyond



What Is a Core Switch? Network Backbone Architecture Guide

In a large enterprise, the core switch aggregates data from multiple distribution switches and routes it rapidly across the local area network (LAN) or toward the data center.

What Is a Core Switch?

A core switch is the backbone of a large-scale network, designed to handle massive volumes of traffic with ultra-low latency and maximum reliability. Sitting at the top of the hierarchical model, core



Best Core Switches for 2026 Enterprise Networks

The market is segmented into core, distribution, and access switches, with core switches playing a pivotal role in managing high network traffic volumes and ensuring seamless connectivity within large



Ruijie Network Switches

These core switches are optimized for large-scale and cross-region data centers, built with high-density 100/200/400GE ports and smart scheduling to maximize computing efficiency for scalable, cost



ITEE::Future Data Centers Core Switches Design Challenges

In heavy data center systems the electronic links and switches consumes a large amount of power and it is difficult to perform power savings by turning of underutilized machines.

Understanding Core Switch: What It Is and How to

In the realm of system networking, three key types of switches are frequently mentioned: access switches, aggregation switches, and core switches.



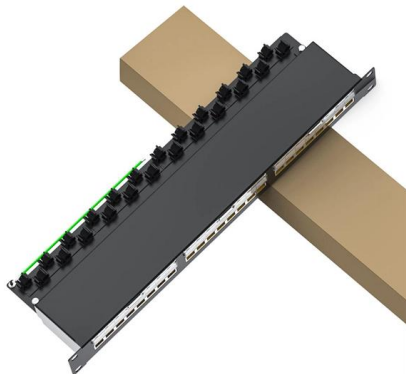


Large Format Inter-changeable Core Cylinder Schlage®

APPLICATION A1 ETI model A1 Inter-changeable Core Key Switch Controls will integrate into systems performing the Switch Action of Momentary on-on with 33°

Cisco Switch Selector

Medium-size to large-scale SAN architectures built with SAN core directors can expand 32-Gbps connectivity to the server rack using these switches either in

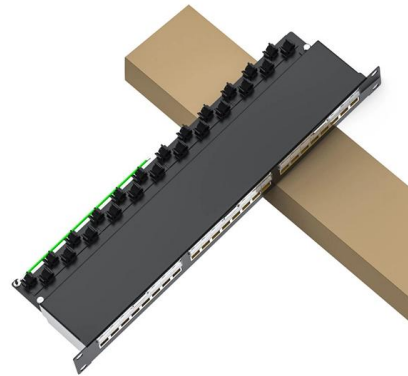


Understanding Core Switch: What It Is and How to Choose the

A core switch is not merely a type of switch but rather denotes the switch that operates at the core layer (the network's backbone). Positioned at the top of the three-layer network architecture

What is a Core Switch?

What is a Core Switch? A Deep Dive A core switch is the backbone of a network, providing high-speed switching for data packets between different network segments; essentially, it's



Large core fiber optical switch

Large core fiber optical switch The operating wavelength of optical switch can support 280nm, 375nm, 405nm, 488nm, 525nm, 532nm, 650nm, 780nm, 850nm,



Campus LAN Core and Distribution Switches

Build the foundation for an automated, digital-ready network with 400G core switches. Get set for whatever the future brings, with flexible solutions from ASIC



Shop Core Switches with Competitive Pricing - network-switch

Explore high-performance core switches from top-tier brands like Cisco, Huawei, Ruijie etc., with comprehensive port configurations, robust security protocols.





Large Core UV-IR High Power Fiber Optical Switch

The LFSH Series Fiber Optical Large Core Switch uniquely features high power handling up to 10W for large core fiber up to 1mm in diameter. It directly

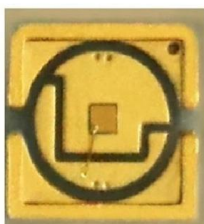
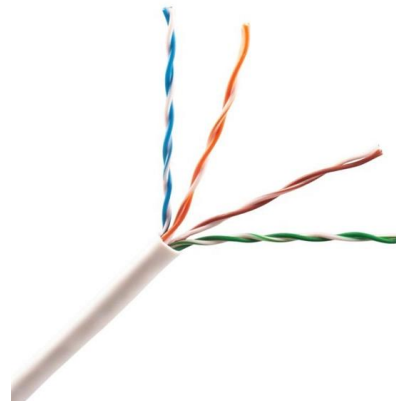


Data Center Switches

Ruijie data center and cloud computing switches help to build large-scale, automated and visualized cloud data centers, providing efficient and intelligent operation and maintenance experience.

How to choose the right core switch for a medium to

In medium to large networks, core switches are key devices to ensure efficient, stable and secure network operation. Choosing the right core switch not



What Is a Core Switch?

Sitting at the top of the hierarchical model, core switches interconnect distribution layer switches and provide high-speed data transfer across network segments. Unlike access or distribution switches, a



Core Switches: The Pillar of Network Infrastructure

Get a closer look at core switches: the nerve centers of network infrastructure that enhance performance and facilitate growth.



What Is a Core Switch in a Network?

A computer network relies on specialized hardware, such as a network switch, to manage the flow of digital traffic efficiently. A network switch connects multiple devices within a local area

Core Switch Explained: Key Functions and Benefits

Discover what a Core Switch is, its pivotal role in network architecture, and how it boosts performance and reliability in your data infrastructure.



What is a Core Switch , Functions and Difference over Normal Switch

What is a core switch and how it works? This article builds the basics of this kind of switch for the ones who don't know anything about it. What is a Core Switch? It is a powerful



Large Format Interchangeable Core Key Switch Controls

Large Format IC Core Schlage® Design The ICSC series key switch incorporate design features which meet or exceed the varied & demanding requirements of industrial, commercial and institutional



- ✓ Panda PM Fiber Armored Patch Cord - 3.0mm
- ✓ ER>30dB / 25dB
- ✓ Own Factory, MOQ 1 piece

Contact Us

For datasheets, pricing, or custom telecom energy solutions, please visit:
<https://koskolong.co.za>