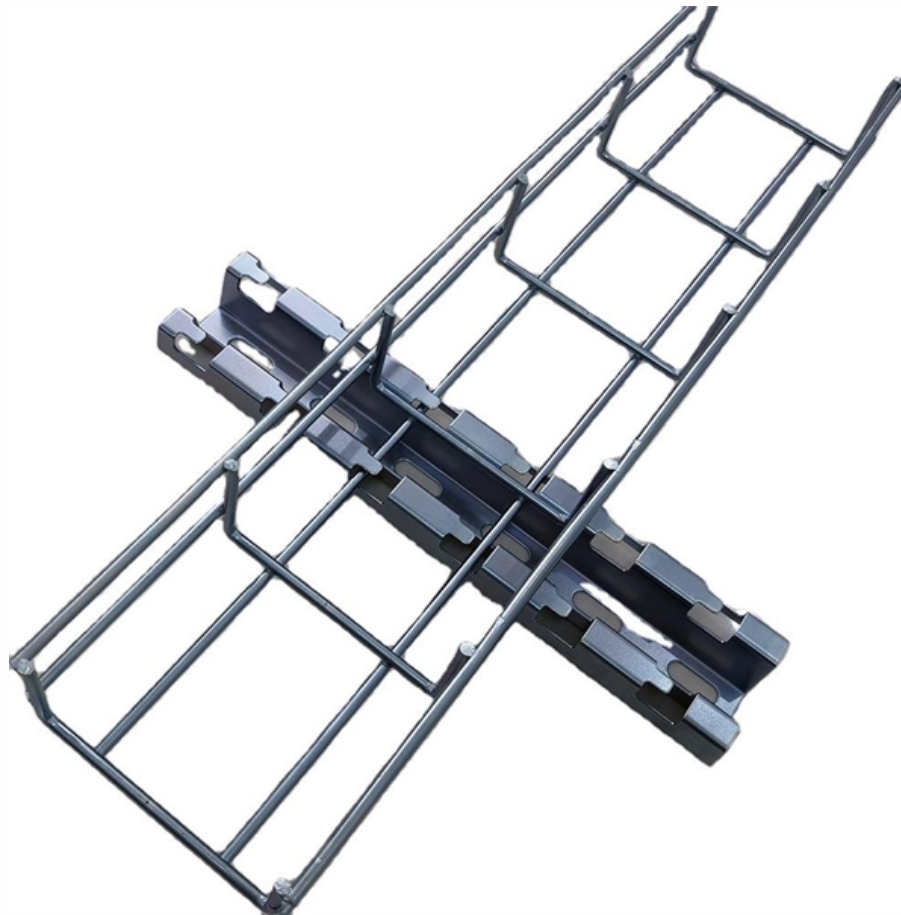




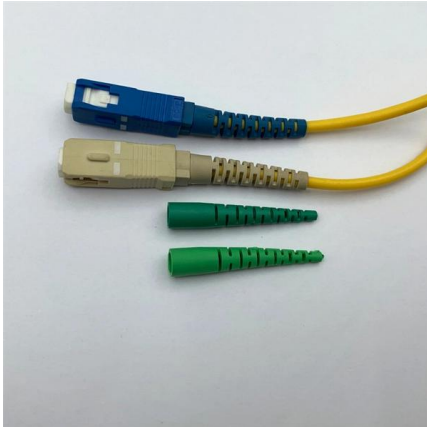
Adam Tas Corridor Energy

Large fiber core beam splitter 1 to 2





Large fiber core beam splitter 1 to 2



1x2 Optical Splitter , Multimode , FIBERONE

The FIBERONE 1×2 Multimode Optical Splitter is a premium component designed for the exact distribution of optical signals in high-performance data environments. Utilizing Fused Biconical

Multiport Fiber Optic Beam Splitters for Space Division Multiplexed

We incorporate two major types of SDM fibers (i.e. few mode fibers and multicore fibers) in a micro-optic collimator assembly and realize fully integrated multiport SDM fiber components (e.g.



What is Fiber Optic Splitter? How It Works?

What is a Fiber Optic Splitter? At its core, a fiber optic splitter (also known as a beam splitter or optical splitter) is a passive device that takes a single input optical



Fiber-Based Polarization Beam Combiners/Splitters, 1

Thorlabs' Single Mode Fiber-Based Polarization Beam Combiners (PBC) or Splitters are designed



to either combine two orthogonal polarizations into a single fiber or



Optical Splitters in Modern Networks

Unraveling the Power of Optical Splitters in Modern Networks In today's optical network topologies, the advent of fiber optic splitters contributes to

Fiber-optic splitter

A fiber-optic splitter, also known as a beam splitter, is based on a quartz substrate of an integrated waveguide optical power distribution device, similar to a coaxial cable transmission system.



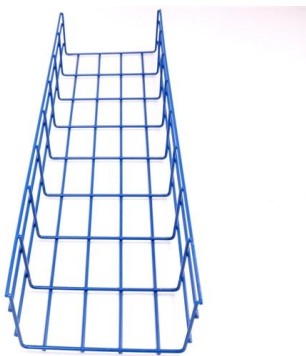
Fiber Optic Splitter

Specifically speaking, the passive optical splitter can split, or separate, an incident light beam into several light beams at a certain ratio. The 1x4 split configuration presented below is the basic



Datasheet

Fibers with smaller core diameters (<5 mm) must be kept extremely clean, contamination at fiber-fiber interfaces, combined with the high optical power density, can lead to significant optical damage.

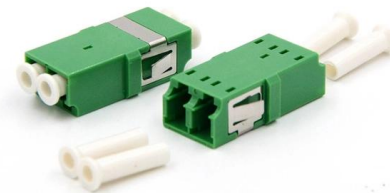


Large Core Fiber Coupler (Multimode Fiber Optic Splitter)

Employing excellent fused biconical taper (FBT) technology, Lfiber can fabricate desired large core fiber coupler (multimode fiber optic splitter) with precise operating wavelengths and coupling ratios.

Double nested dual-core negative curvature fiber polarization beam splitter

Polarization beam splitter (PBS) plays an important role in many applications, such as optical communication networks, wavelength division multiplexing, optical sensing, and some



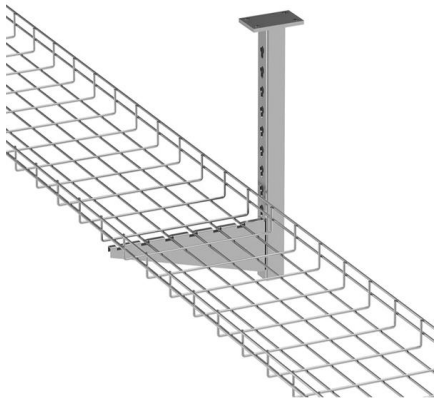
Dual hollow-core anti-resonant fiber polarization beam splitter with

In this paper, we propose an ultra-broadband polarization beam splitter for a dual hollow-core anti-resonant fiber. We divide the fiber core into two parts by introducing the two longer U



How Do Fiber Optic Splitters Work, and What Are Their

Explore the workings of fiber optic splitters, their technical specifications, and wide-ranging industrial applications in this informative,



Multicube Systems: Beam Splitter

These fiber-coupled Beam Splitters are compact opto-mechanical units that split a fiber-coupled source into two output fiber cables with high efficiency.

1x2 Optical Splitter , Multimode , FIBERONE

The FIBERONE 1x2 Multimode Optical Splitter is a premium component designed for the exact distribution of optical signals in high-performance data environments.



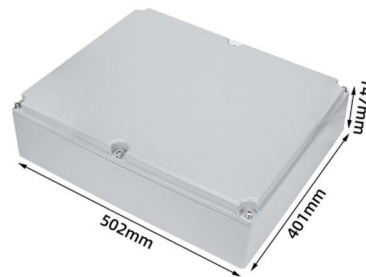


Single layer dual hollow core antiresonant fiber based polarization

In this article, traditional and available multilayer complex cladding geometry, in dual hollow core antiresonant fiber, is simplified to single layer arrangement and created efficient

Fiber WDMs, Combiners, Splitters and Couplers

Polarizing beamsplitters split incoming light into two orthogonal states. They can also be used to combine the light from two fibers into a single output fiber. When used



Polarizing Beam Splitter 1 ? 2, 48-MCS-015

This fiber-coupled Polarizing Beam Splitter 1 ? 2 is a compact opto-mechanical unit that splits the radiation guided in the two linear principle states of a polarization

Fiber Optic Splitter 1x2: A Smart Choice for Precise

Posted on August 1, 2025 In today's high-speed optical networks, precise and efficient signal distribution is fundamental. Among the most compact yet essential



FIBERONE: Fiber Optic Splitter Overview , 2026

It has a core with a larger diameter and allows for more generous tolerances when coupling or connecting to the fiber. This type of fiber is commonly used in short



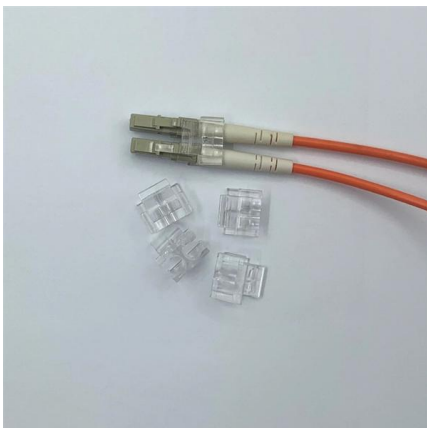
Fused Fiber Optic Couplers / Splitters

Our SM and double-clad fiber coupler offerings also include a selection of components ideal for OCT applications.



Polarizing Beam Splitter & Polarized Beam Splitter

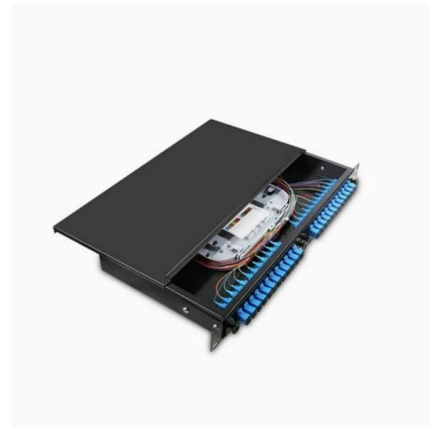
Coherent Telecommunication Systems: The Polarization Beam Splitter seamlessly integrates into coherent telecommunication systems to achieve reliable





Fiber Optic Splitters , PLC & FBT Optical Splitters

Discover a wide range of reliable fiber optic splitters. Our PLC and FBT splitters offer low loss and various split ratios for FTTH, PON, and CATV networks.



Single-mode polarization beam splitter based on dual-hollow-core anti

This paper proposes a single-mode polarization beam splitter (PBS) based on dual-hollow-core anti-resonant fiber (DHC-ARF). A glass dielectric layer is introduced through the center of

What Is an Optical Splitter?

Fiber optic splitter, also referred to as optical splitter, fiber splitter or beam splitter, is an integrated waveguide optical power distribution device that



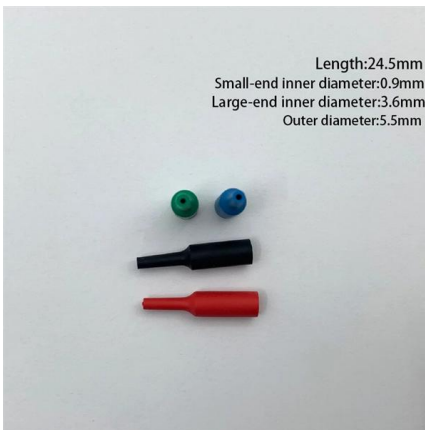
Your Go-to Guide to Optical Splitter

The optical splitter is an optical power distribution device that splits one optical signal into multiple optical fiber signals to achieve multichannel transmission.



DTS0095

Both 1XN and 2XN splitters can be constructed in this fashion with as many as eight or more outputs, with both low return losses and low insertion losses. This design is extremely flexible, allowing one to



Optical Splitters Demystified: The Silent Heroes

? How Does an Optical Splitter Work? The working principle is based on the fundamental physics of light. Light, traveling through the core of a fiber

Splitters - Optical Fiber Assemblies

Explore splitter fiber assemblies for precise 1:2 light routing in spectroscopic setups. Compatibility with UV-VIS and VIS-NIR applications.





1x2 /2x2 Large Fiber Core 105/125 mm Coupler/Splitter

Couplers are highly efficient in splitting light with little loss, about 0.2dB per joint, but incur significant losses when combining lights; for example, a 50/50 coupler produces a 50% loss to each beam

Contact Us

For datasheets, pricing, or custom telecom energy solutions, please visit:
<https://koskolong.co.za>