



Adam Tas Corridor Energy

Length requirements for vertical supports of cable trays





Overview

As uniform as possible, however, the Run Length Between Supports should ideally be in the range of 4 to 6 feet as indicated in the NEC design and load factor. Although BS 7671 touches on the subject of cable supports, it does not detail specifically what these support distances should be. 8 (Other Mechanical Stresses (AJ)) in that document provides requirements for cable support. The mechanical and electrical characteristics, tests, certifications, overall quality management, recommendations mentioned in this technical guide only apply to our own cable management ranges and cannot under any circumstances be transposed to silicone, overheating or. Our cable support systems are part of the Industrial installations area of application and, for all products used in industry, the following applies: They must withstand different weather and ambient conditions, as well as mechanical loads. It also demonstrates how Eaton's solutions and services can help: As an industry leader in cable tray, Eaton offers one of the widest ranges of.



Length requirements for vertical supports of cable trays

CABLE TRAYS GENERAL INFORMATION AND

Cable tray systems are to be installed so they are accessible. If possible 300mm minimum should be left above or between installed systems to allow for cable



Guide to cable support systems

With regard to the cable support lengths, the manufacturer must provide information on the limit values for the final support spacing, position and type of the connection with-in the span width as well as the



Cable Tray Spacing Standards for Installation and Safety

When planning the vertical spacing between floor-mounted cable trays, the minimum distance should be 150 millimeters. This clearance prevents



B-Line series Cable Tray Design Considerations

Our wind certification report provides you with list of acceptable B-Line series cable tray



supports, fittings and covers based off of the environmental conditions, cable loading, and type of cable tray in your



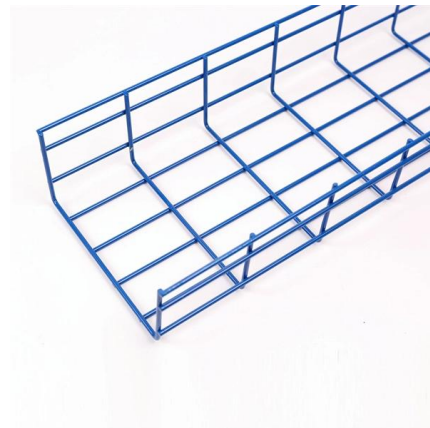
Cable Support Distances

The length between support positions will change depending on the cable design, size, materials and weight. For example, an MDPE sheathed cable will be stiffer and therefore require a greater distance



CABLE TRAY SYSTEMS GUIDE

Steel Ladder System Hubbell's NEXTFRAME® Ladder Tray is the effective and widely used cable runway that supports and delivers bundles of cable between cabinets, racks, and closets, along



Best Practice Guide to Cable Ladder and Cable Tray Systems

Where products of five metre lengths or above are packed in bundles, they shall be supported with a minimum of three timber bearers which provide sufficient clearance to accommodate the forks of a



Cable tray manual

INTRODUCTION The B-Line series Cable Tray Manual was produced by our technical staff. We recognize the need for a complete cable tray reference source for electrical engineers and designers.



Cable Tray, Cable Bus, Wire Mesh Cable Trays , MP

MP Husky manufacturers Cable Tray Systems, Cable Bus System, Wire Mesh/Wire, Cable Tray, & Cable Management Systems. Our cable support

Criteria for Sizing, Designing, Installing and Supporting of Cable-Tray

Vertical supports shall provide secure means, other than friction, for fastening cable trays to supports. 9.7.4 Supports shall be located so that connectors between horizontal straight sections of



Technical Specification for Cable tray installation and cable laying work

1. Scope :- This specification covers the following major activities; - Fabrication and installation of Mild Steel (MS) support structure for Galvanized Iron (GI) Cable tray. - Installation of perforated GI Cable



Document DICOS

Supports for cable trays should provide strength and working load capabilities sufficient to meet the load requirement of the cable tray wiring system. Consideration should be given to loads associated with



Cable Tray Support Spacing: Key Guidelines Explained

Explore the essential cable tray support spacing requirements for safe and efficient installations. Learn NEC guidelines for perforated, ladder, and wire

CABLE TRAY

Supports for cable trays should provide strength and working load capabilities sufficient to meet the load requirement of the cable tray wiring system. Consideration should be given to the loads associated



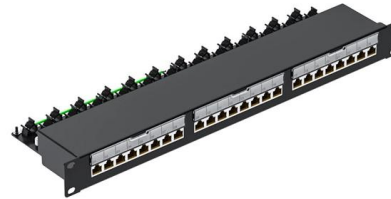


Cable Tray Spacing Standards for Installation and Safety

Key Factors Impacting Cable Tray Spacing
Understanding cable tray spacing is key to meeting safety regulations and maintaining system

Vertical Straight Cable Tray Support Spacing , Eng-Tips

However, NEMA VE-2 section 4.3.1 states that" The support span should not be greater than the straight section length or as recommended by the manufacturer, to ensure no more than



Best practice guide to cable ladder and cable tray

Cable ladder and cable tray systems The following recommendations are intended to be a practical guide to ensure the safe and proper installation of

Best Practice Guide to Cable Ladder and Cable Tray Systems

Introduction This publication is intended as a practical guide for the proper and safe* installation of cable ladder systems, cable tray systems, channel support systems and associated supports.



Cable Tray Technical Guide A practical guide to product selection and

Cable tray length is selected based on the load to be supported, the distance between the supports (also referred to as the span), and handling and installation constraints.

26 05 36 Cable Trays for Electrical Systems

Install cable tray as a complete system, including fasteners, hold-down clips, support systems, barrier strips, adjustable horizontal and vertical splice plates, elbows, reducers, tees, crosses, cable



Cable Tray Technical Guide A practical guide to product selection and

Cable Tray Technical Guide A practical guide to product selection and installation This guide for engineers and installers has been developed by ABB as a practical reference regarding cable tray





Guide to cable support systems

The cable support lengths and fittings can basically be designed as cable trays, cable ladders or mesh cable trays, in which cables are routed. Fittings can, on the one hand, be used for horizontal or



Vertical Straight Cable Tray Support Spacing , Eng-Tips

In vertical trays, cables shall also be secured at intermediate locations as necessary to keep all cables completely within and secured to the tray." So, it is no indication what could be the

GENERAL INFORMATION

In vertical installations, the weight of the suspended cable creates a tensile load on itself and is the factor, from a cable perspective, that limits the height of vertical installation for a tight buffer cable.



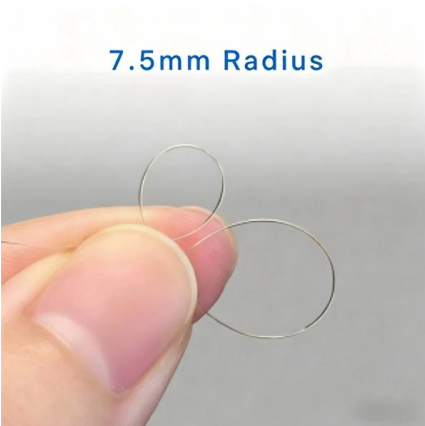
IEC Standard for Cable Tray: Complete Technical Guide

The IEC standard for cable tray recognizes multiple tray types depending on application and structure. Each type serves a different purpose in



GUIDE CABLE TRAYS TECHNICAL

Specifies requirements for metal cable trays and associated fittings designed for use in accordance with the rules of Canadian Electrical Code, Part I and the National Electrical Code®



Cable Tray Installation Method Statement

Manufacturer's instruction for installation shall be followed. Ensure the installation of cable tray / ladder are neat, in straight line for good aesthetic look. Trim the extra

A Guide to Installing and Supporting Electrical Cable Trays

A professional guide to installing electrical cable tray systems per NEC Article 392. Covers support, securing cables, and fill calculations.





Contact Us

For datasheets, pricing, or custom telecom energy solutions, please visit:
<https://koskolong.co.za>