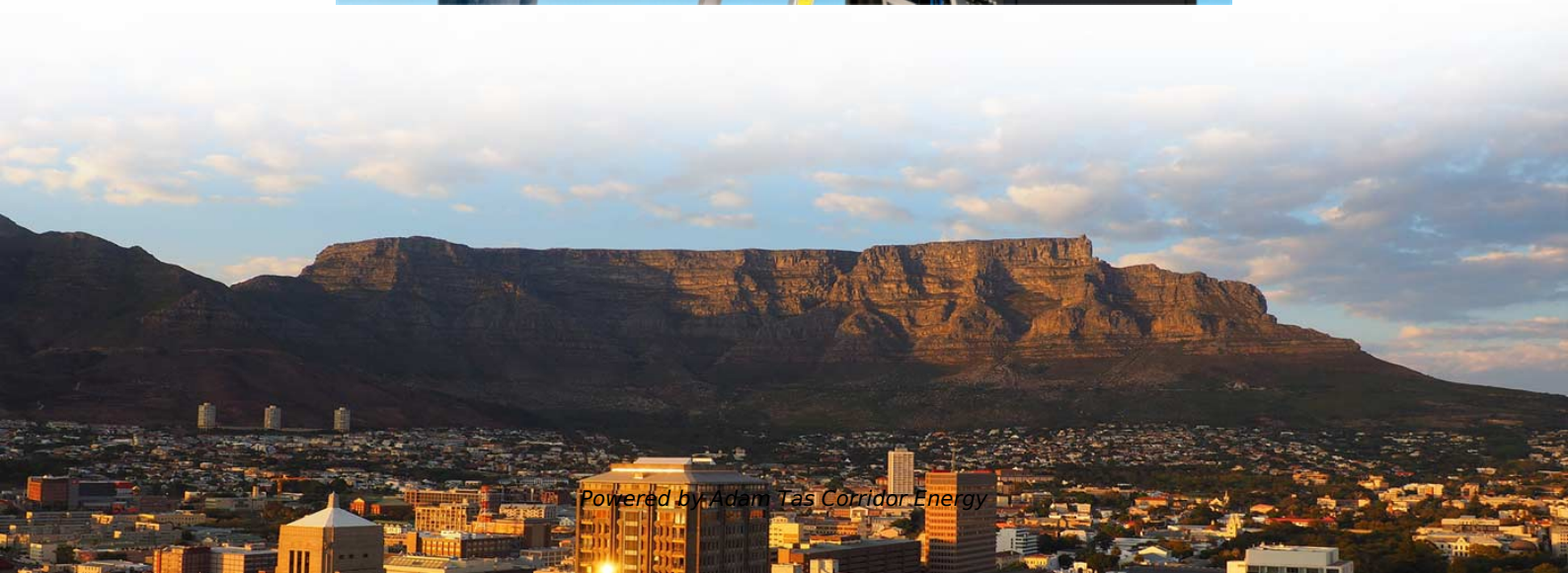




Adam Tas Corridor Energy

Level 1 distribution box with one switch and one protection





Overview

Designed for local control with strict safety standards, such as "one device, one circuit breaker, one residual current device, and one box. A decisive factor for the selection of the right fuse box is the size and number of PD (division units / 1 PD = 17. Depending on whether you want to use the surface-mounted distributors as small distributors or for larger sub-distribution. That is, a distribution electric box is arranged under the general distribution box, and a switch box is arranged under the switch box, and electrical equipment is arranged under the switch box to form a three-level distribution. The complete set of products can form a complete three-level protection system for construction electricity, achieving the goal of one machine, one switch, and one protection, which is very suitable for various standard engineering applications.



Level 1 distribution box with one switch and one protection

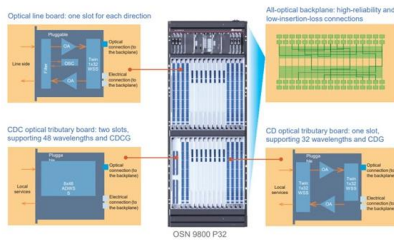


ABB Low voltage distribution system

ABB Low voltage distribution system offers safe and reliable distribution based on InLine ZLBM fuse switch disconnecter. It's a full IP2X protected system consisting

Reuters , Breaking International News & Views

Find latest news from every corner of the globe at Reuters , your online source for breaking international news coverage.



Business Standard

Hier sollte eine Beschreibung angezeigt werden, diese Seite lässt dies jedoch nicht zu.

The difference between the first, second, and third levels of

The complete set of products can form a complete three-level protection system for



construction electricity, achieving the goal of one machine, one switch, and one protection, which is



The Financial Express , First Financial Daily of Bangladesh

Get latest stock share market news, financial news, economy news, politics news, breaking news, Bangladesh economy news at The Financial Express.

Understanding Distribution Boxes: A Comprehensive Guide

Learn what a distribution box is, its types, and how to choose the right one for your project. Includes clear examples and expert tips.



Wiring a Single Phase Distribution Board: A Step-by

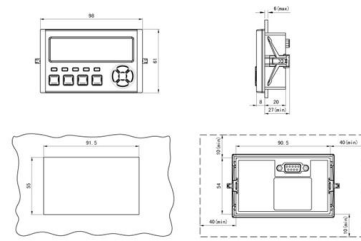
Wiring a single phase distribution board can seem like a daunting task, but with the right instructions and understanding of the process, it can be easily





Distribution switchboards

System modularity that makes it possible to integrate numerous functions in a single distribution switchboard, including protection, distribution switchboard maintenance, operation and



Power Distribution Boxes Explained Simply

Discover the essentials of a Power Distribution Box--how it works, key types, benefits, and tips to ensure safe, efficient electrical power management.

Distribution Box Guide: Types, Components & Solutions

With devices like DB circuit breakers, variable frequency drives (VFD), and automatic transfer switches (ATS), these boxes provide reliable



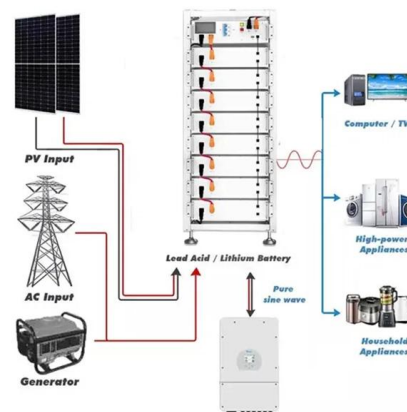
Distribution switchboards

The high level of performance is obtained through Protection Coordination, where the combined operation of protective and switching devices with internal electrical and mechanical



Basics in low voltage distribution equipment

In some cases, more highly functional low voltage distribution equipment is needed to best protect, control and monitor critical power electrical distribution systems safely and efficiently.



The Meaning and Function of Primary, Secondary, and Tertiary

Designed for local control with strict safety standards, such as "one device, one circuit breaker, one residual current device, and one box." May include both fixed and portable boxes, ensuring individual

What is Level 1, Level 2 and Level 3 distribution box

"One machine, one gate, one leak, one box, one lock" principle, that is, it is strictly prohibited to directly control two or more sets of electrical equipment (including sockets) with the same switch.





The installation requirements for the distribution box

Learn how to install a distribution box safely and correctly. Covers wiring, placement, standards, and expert tips for a compliant setup.



Single Phase Distribution Box Definition and Main Parts

A single phase distribution box controls and protects home or office circuits. Learn its definition, main parts, and how it ensures electrical safety.



A Complete Guide to LV Distribution Board , CHINT global

LV distribution boards, part of the electrical distribution system, securely distribute low-voltage power to facility circuits.

Distribution Boxes: Types and Functions

Learn what an electrical distribution box (DB/distribution board) is, its main components (MCB/RCCB/RCBO, SPD, busbar) and common types.



Distribution Boxes Types - The Complete Guide

The best device for distributing solar power is a panel box for fuse bank. Before being dispersed throughout the house, the power is stored on the solar



The Ultimate Guide to Distribution Box Types

Discover the key types of distribution boxes with NUOMAK's comprehensive guide. Learn about Main Distribution Boards (MDB), Consumer Units, Transfer



Configure surface-mounted distribution box now

In this way, you can design a tailor-made surface-mounted distribution box for every area of application that meets the requirements for simple, safe and low





The Complete Guide to Distribution Box: Installation, Types & More

The main switch, or main breaker, controls the entire electrical supply to the distribution box. This large switch allows you to disconnect all power to the building during emergencies or



How to Choose a House Distribution Box , CHINT global

A well-chosen distribution box ensures the safety and efficiency of your household electrical system. This article guides you through selecting a



1075KW HH ESS

A Complete Guide to Distribution Boards

Dual RCD consumer units are a step down in terms of protective capacity but are still suitable for most standard uses. They consist of two circuit



The Meaning and Function of Primary, Secondary, and Tertiary

Forms part of the three-level protection system. Features inner and outer doors, powder-coated exteriors, and rainproof tops for outdoor use. Tertiary Distribution Box: The system includes a



Contact Us

For datasheets, pricing, or custom telecom energy solutions, please visit:
<https://koskolong.co.za>