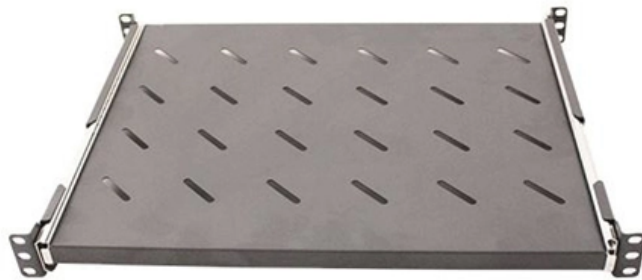




Adam Tas Corridor Energy

Local temperature rise in the distribution box





Overview

Loose connections or worn out contact surfaces are the root causes of electrical system conduction troubles. Think of the last time you touched a device that was too hot - that discomfort is multiplied a thousandfold inside a distribution box. In the daily maintenance of power distribution systems, the biggest concern is the unexplained overheating of the wiring terminals. Extremely high long-term external temperatures can overheat technological buildings, transformer stations, and in.



Local temperature rise in the distribution box



Three main causes of distribution box failure

The distribution box of rural power network transformation operates outdoors. It not only receives direct sunlight, but also generates heat during operation. Therefore,

Thermal Distribution Simulation and Temperature Rise Prediction of

Download Citation , On Nov 29, 2024, Yang Wenqiang and others published Thermal Distribution Simulation and Temperature Rise Prediction of Low-Voltage Comprehensive Distribution Box , Find,



The Failure Of Distribution Box Caused By Ambient Temperature And

Causes of distribution box failure caused by ambient temperature The low-voltage apparatus in the distribution box is composed of fuse, AC contactor, residual current action protector, capacitor and

Low voltage Distribution Box Monitoring

In this Paper, the primary focus is on the distribution box health monitoring from which

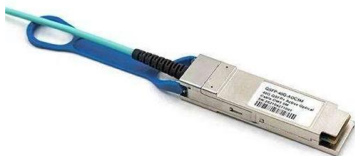


load power distribution monitoring is done. Distribution box is one from which power is distributed to low level.



A Scheme for Suppressing Local Temperature Rise in High

Furthermore, it identifies key components affected by temperature rise and proposes solutions to mitigate temperature rise induced by increased current through casing structure



How to calculate the temperature rise in a sealed enclosure

How to calculate the temperature rise in a sealed enclosure Often times electrical or electronic components are housed in sealed enclosures to prevent the ingress of



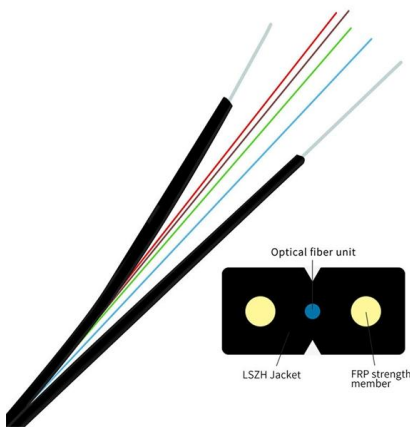
Temperature rise test and analysis of high current

2 Temperature rise tests of the switchgear In order to get the detailed temperature distribution in the switchgear, we choose a KYN28A-12 (Z) overhead



Temperature Rise Test and Analysis of High Current Switchgear in

For the purpose of getting the detailed temperature distribution in the switchgear, a series of temperature rise tests were carried out based on the KYN28A-12(Z) overhead line switchgear, and the



Vulnerability of power distribution networks to local temperature

Meanwhile, the anticipated rise in local temperatures in cooling-degree days due to GCC will reduce the capacity of distribution grid (DG) lines and increase the electricity demand. GCC

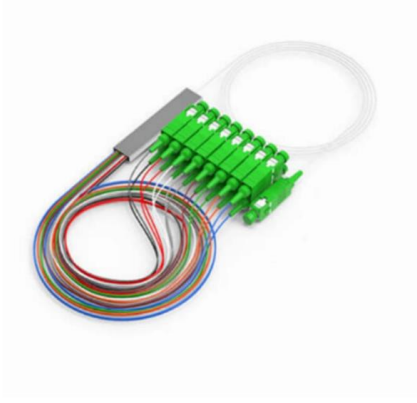
A Scheme for Suppressing Local Temperature Rise in High

This paper investigates and analyzes the distribution characteristics of temperature rise under typical working conditions and identifies the primary factors influencing temperature rise in DC



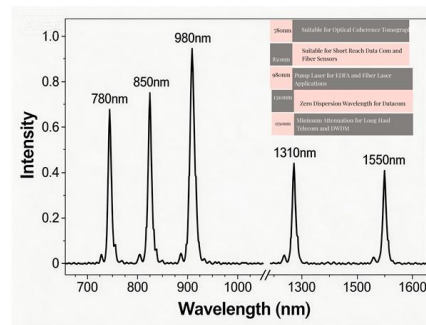
Thermal Distribution Simulation and Temperature Rise Prediction of

Low-voltage comprehensive distribution boxes are widely used in distribution networks, and their temperature rise performance of being long-term power on direct



Study on temperature distribution of box-type distribution room under

As an important part of the power transmission and distribution network in the power system, many problems in the box-type distribution room deserve attention. Especially the overheating problem will



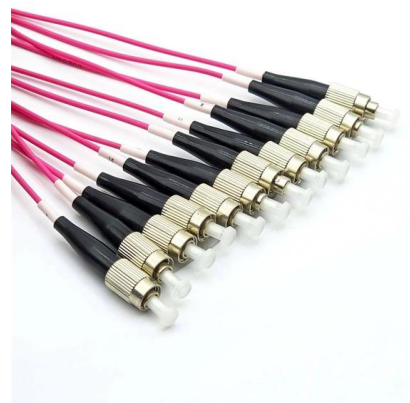
Experimental study on thermal storage characteristics of cold storage

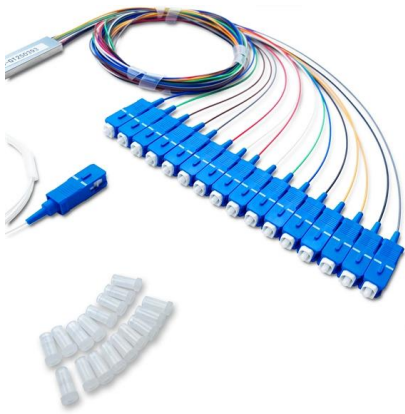
Thermal storage characteristics are important evaluation indicators of cold storage equipment. A cold storage distribution box was tested to investigate the effects of the amount of



Thermal conditions of electrical equipment and

They cause a local temperature increase, which worsens the contact quality even further as the current increases. This causes thermal runaway, which



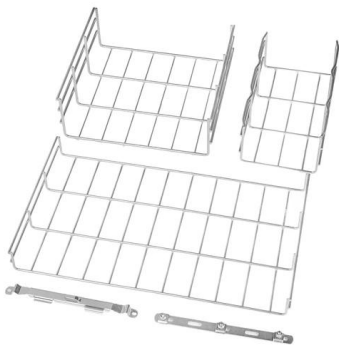


Reuters , Breaking International News & Views

Find latest news from every corner of the globe at Reuters , your online source for breaking international news coverage.

Distribution box cooling method

This method is usually suitable for distribution boxes with larger power or places with higher ambient temperature. Heat sink or heat sink: heat sink or heat sink can be installed inside or outside the



Thermal Distribution Simulation and Temperature Rise Prediction of

Download Citation , On Nov 29, 2024, Yang Wenqiang and others published Thermal Distribution Simulation and Temperature Rise Prediction of Low-Voltage Comprehensive Distribution Box ,

How to confirm whether the installation location of the

If the electrical power distribution box needs to be installed in a humid area, a box that meets the protection level (IP level) requirements must be



Temperature rise test of distribution boxes: evaluate the heat

A seemingly insignificant 5°C increase in operating temperature translates to dramatically accelerated aging. But with the testing approaches we've discussed today, we can spot those small temperature



Non-intrusive temperature rise fault-identification of distribution

Non-intrusive temperature rise fault-identification is realized by setting clustering rules and temperature thresholds to compare the location of the heat source with the location of the distribution



Top-oil temperature modelling by calibrating oil time constant for an

In this paper, a wide range of constant load temperature rise tests were carried out on an 11/0.433 kV distribution transformer to study the dynamic thermal behaviour of the top-oil temperature.





THE EFFECT OF TEMPERATURE AND TEMPERATURE RISE

In this paper, we will attempt to show that specific instances of such electrical equipment failures could be caused by temperature rise in prefabricated substation.



Research on temperature rise of high current switchgear

Reference [3 - 6] also shows their simulation of the switchgear and paper shows the detailed temperature distribution. With the simulation results,

How to calculate the temperature rise in a sealed enclosure

How to calculate the temperature rise in a sealed enclosure Often times electrical or electronic components are housed in sealed enclosures to prevent the ingress of



The Truth About Heat Dissipation In Industrial Power Distribution

If the temperature rise of the power distribution terminal strip equipment can be controlled within a reasonable range, surrounding circuit breakers and relays will not frequently malfunction due



Temperature rise test and analysis of high

Reference introduced an advanced temperature measurement technology and a practical switchgear temperature warning system. However, there are few researches on the rate of temperature rise and



Research on temperature rise of high current switchgear in distribution

Reference [3 - 6] also shows their simulation of the switchgear and paper shows the detailed temperature distribution. With the simulation results, some authors start to detect the

How to Calculate Temperature Rise Inside Enclosures

Learn how to calculate the temperature rise inside enclosures. Using this information, you can determine the necessary cooling for your enclosure!





THE EFFECT OF TEMPERATURE AND TEMPERATURE RISE TEST OF DISTRIBUTION

The temperature rise tests are therefore focused mainly on the temperature measurement of transformer insulation system (coolant or oil) and windings. Measurements on HV components are not

Contact Us

For datasheets, pricing, or custom telecom energy solutions, please visit:
<https://koskolong.co.za>