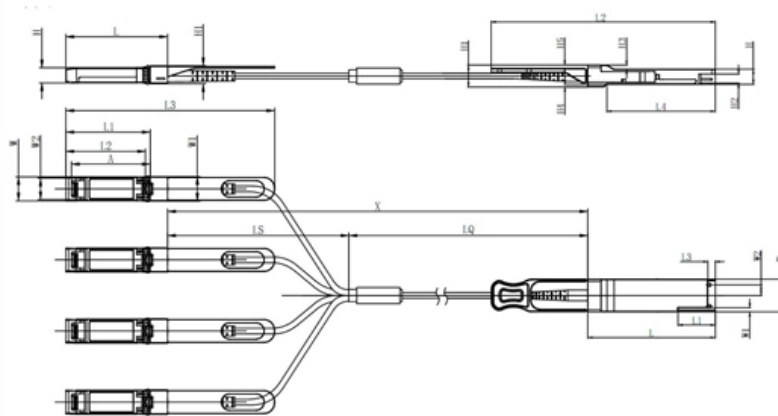




Location of the beam splitter in the optical distribution box



Unit mm

QSFP28	L	L1	L2	L3	L4	W	W1	W2	H	H1	H2	H3	H4	H5	H6
Max	72.2	-	128	4.35	61.4	18.45	-	6.2	8.6	12.4	5.35	2.5	1.6	2.0	-
Type	72.0	-	-	4.20	61.2	18.35	-	-	8.5	12.2	5.2	2.3	1.5	1.8	6.55
Min	68.8	16.5	124	4.05	61.0	18.25	2.2	5.8	8.4	12.0	5.05	2.1	1.3	1.6	-

SFP28	L	L1	L2	L3	W	W1	W2	H	H1	A
Max	57.6	47.7	44.55	119.9	13.8	14.0	12.3	8.7	10.3	45.25
Type	57.4	47.5	44.35	117.9	13.55	13.8	12.1	8.5	10.1	45
Min	57.2	47.3	44.15	115.9	13.3	13.6	11.9	8.4	9.9	44.65





Location of the beam splitter in the optical distribution box



What is PLC splitter?

A fiber-optic splitter, also known as a beam splitter, is based on a

SOPTO

Explore key differences among ODF, Splitter Distribution Box, and Fiber Terminal Box. Cover features, applications, matching products, and selection criteria for FTTH/optical networks.



FIBER OPTIC DISTRIBUTION BOX

AR-DB-CDO-10P-HC DESCRIPTION The equipment is used as an intermediate distribution point or a termination point for the feeder cable to connect with a drop cable in FTTH . ommunication network



How to Install the Splitter Distribution Box

How to install the splitter distribution box is the important information we need to know. This

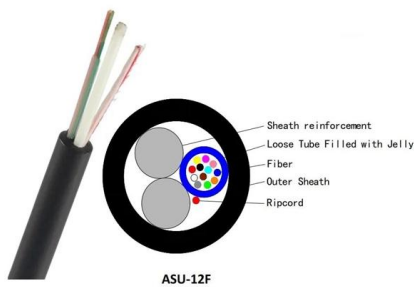


article includes the following: 1. Install the fixture
2.



Fiber Distribution Box.pub

Fiber Distribution box contains the shell, the internals (supporting frame, set fiber disc, fixing device) and optical fiber joint protective element. Prominent advantages of fiber termination box lie in efficient



Introduction to Passive Optical Network Splitter Architectures

In this scenario, the splitters are located in the central office or OLT location, shown in the blue circle. This architecture is similar to a "point to point" network, since one fiber is needed for each customer



Optical Splitters Demystified: The Silent Heroes

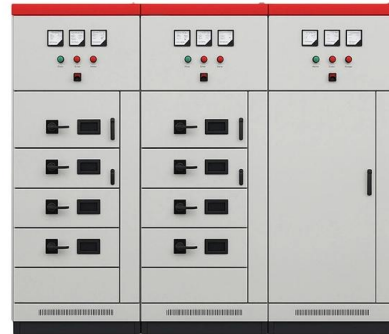
An Optical Splitter, also known as a beam splitter, is a passive optical device that divides a single input optical signal into two or more output signals.





2021 Ultimate Guide of the Fiber Distribution Box

A fiber optic distribution box is a wall-mounted or pole-mounted box with or without a splitter, for indoor and outdoor application. It is used in the FTTH



An In-Depth Exploration of Fiber Optic Distribution

It begins with an introduction to fiber optic technology and the pivotal role of distribution boxes in managing fiber optic cables. The article categorizes the

Fiber Optic Splitter Box Installation and Use for Fiber Optic

The use of the splitter box facilitates signal splitting, management, monitoring, and protection in the network. Regular maintenance and troubleshooting of the fiber optic splitter box are



Integrated wiring fiber optic distribution box installation tutorial

The optical fiber distribution box allows people to easily access the optical fibers in the box, and can well protect the optical fibers. In addition, the drawer structure also facilitates high



FIBER OPTIC DISTRIBUTION BOX

AR-DB-CDO-10P-HC DESCRIPTION The equipment is used as an intermediate distribution point or a termination point for the feeder cable to connect with a drop cable in FTTx communication network



Optical Splitters Demystified: The Silent Heroes

An optical splitter is a passive device, but it doesn't work alone. It relies on active equipment at both ends of the fiber link: the Optical Line Terminal

Basics of Fiber Optic Distribution Box

Fiber optic distribution box (FDB) is an important component to provide connection, distribution and management of fiber cables.



Fiber Optic Splitter: How It Works & Types Guide

This guide demystifies fiber optic splitters, explaining their design, operating principles, types, key specifications, and real-world applications.



PLC Splitter FTTB Optical Fiber Distribution Box

The distribution box can be used in outdoor and indoor installations for the connection, distribution, and dispatch between outdoor optical fiber cable and



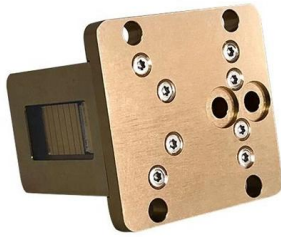
Optical Splitters in Modern Networks

Unraveling the Power of Optical Splitters in Modern Networks In today's optical network topologies, the advent of fiber optic splitters contributes to

Understanding Fiber Splitters: The Backbone of Fiber

A fiber splitter, also known as a beam splitter, is a passive optical device that splits an optical signal into multiple signals. It is a crucial component





The Applications And Benefits of Splitter Distribution Box

The optical fiber cable distribution box provides a cost-effective solution for the FTTH network. Currently, some manufacturers supply this type of box with loaded fiber splitters, adapters,

FDB-04 Fiber Distribution Box, with 1*4 PLC splitter

Overview FDB-04 Series 4 ports Fiber Distribution Box, also called Splitter Distribution Box or Fiber Terminal Box, can be used in FTTH projects and is



The Essential Role of the Fiber Distribution Box in

In the rapidly evolving world of telecommunications and data management, the fiber distribution box stands out as a crucial component of modern network

What is Fiber Optic Splitter and Types

What is a Fiber Optic Splitter? Fiber optic splitter is a passive optical device used to distribute optical signals, which can divide input optical signals into



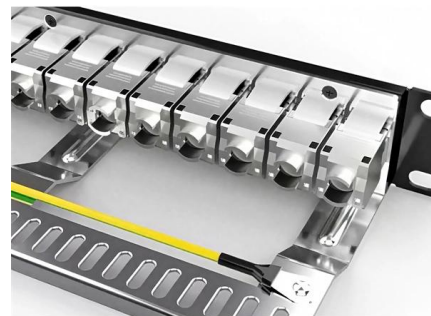
Fiber Optic Splitter

Fiber optic splitter, also referred to as optical splitter, or beam splitter, is an integrated waveguide optical power distribution device that can split an incident light beam into two or more light beams, and vice



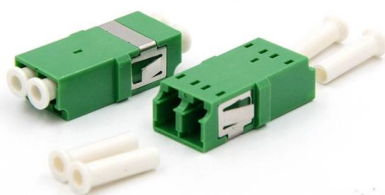
FDB-16C Fiber Distribution Box with PLC splitter-AOA Tech

Overview FDB-16C Series 16 ports Fiber Distribution Box, also called Splitter Distribution Box or Fiber Terminal Box, can be used in FTTH projects and is



Optical fiber distribution box structure

Splice tray: The external fiber optic cable should be welded together with the splitter or the headless end of the pigtail in the fiber optic junction box. A





Your Go-to Guide to Optical Splitter

When an optical signal enters the input port, the coupler inside the splitter can help split the signal into multiple paths that lead to the output ports of the splitter. An



FTTH Products , OLT, ONU, Optical Splitters, Fiber

Discover essential FTTH products like OLT, ONU, optical splitters, and fiber distribution boxes. Learn how to design and deploy an efficient FTTH network for

Fiber-optic splitter

It is an optical fiber tandem device with many input and output terminals, especially applicable to a passive optical network (EPON, GPON, BPON, FTTX, FTTH etc.) to connect the main distribution



Contact Us

For datasheets, pricing, or custom telecom energy solutions, please visit:
<https://koskolong.co.za>