



Low-voltage four-core enclosed busbar

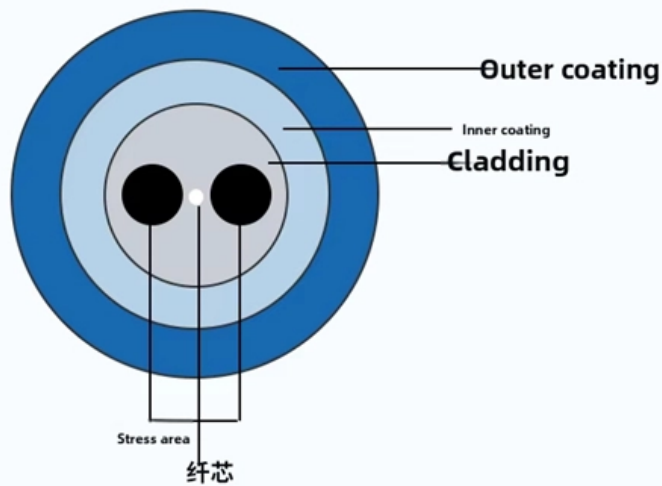
Maintain the performance of polarization maintaining fiber

Accurate refractive index distribution

Good longitudinal uniformity

Optical fiber environment performance is stable

The cross-sectional area has good symmetry





Low-voltage four-core enclosed busbar



Technical Brochure Enclosure o Busbar Chamber System (BBS) o Enclosed

Technical Specification ABB "BBS Busbar Chamber Systems" is made of 1.5mm or 2mm steel plate finished with impact-resistant stove textured grey epoxy powder coating to RAL7032 (standard) or

Low Voltage Bus Bars for Switchgear: Tailored Electrical Conduits for

Low Voltage Bus Bars for Switchgear play a pivotal role in efficient power distribution within electrical systems. By offering customized solutions designed for compatibility, safety, and optimal



IEC 61439 Busbar Standard: A Guide to Low-Voltage

This standard covers busbars used for low-voltage assemblies, power distribution, photovoltaic power systems, and electrical energy control. The IEC

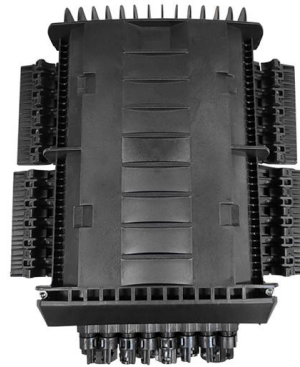


What Are Electrical Busbars? A Complete Guide to

The performance and safety advantages they offer What Is an Electrical Busbar? An electrical



busbar is a metallic strip or bar that carries large



Busbar System

An electrical busbar system is a modular approach to electrical wiring in which instead of routing standard cables to each electrical device, the electrical devices are fitted to adapters that mount



Technical Brochure Enclosure o Busbar Chamber System (BBS) o

System (BBS) Enclosed Switch-disconnectors (LSB) Enclosed Fuse Switches (FSB) Busbar Chamber System (BBS) Technical Specification ABB "BBS Busbar Chamber Systems" is made of 1.5mm or



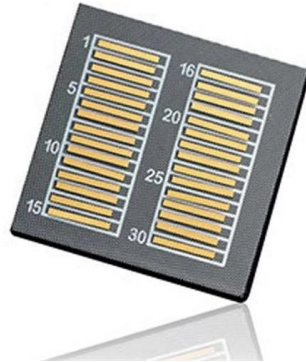
TPEL2691668

Abstract--This paper presents a comprehensive analysis about bus bar design procedure. Some applications in terms of rated power and shape are investigated regarding their particular



BR01701001U_PowerXpert_Busbar_Brochure_EN

Our low power range covers 40, 63, 80, 100 and 125 A ratings. With its attractive appearance and suitability for wall, bench, overhead, or underfloor installation it provides the obvious solution for a

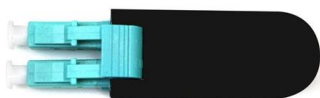


Low-voltage switchgear

I agree that Rittal BmbH & Co. KG may process the personal data that I have provided above in order to send me information about system solutions relating to

Guide to Low Voltage Busbar Trunking Systems Verified to BS EN

Guide to Low Voltage Busbar Trunking Systems Verified to BS EN 61439-6 5 Busbar Trunking System : An enclosed electrical distribution system comprising solid conductors separated by insulating



Busbar

At its core, a busbar system is designed to replace all the line side wiring and associated accessories of an electrical panel. In a traditionally wired panel, the large high amperage feed cables are run to



Design and installation of low voltage busbar trunking

Feeder Trunking Run Feeder trunking runs are used for the interconnection between switchboards or switchboard and transformer. Busbar



Insulated Busbars for Electrical Distribution

Explore insulated busbars designed for safer power distribution, compact installation, and reliable performance in electrical systems.



Metal Enclosed Busbar System (MEB) - LV & MV

Because of the extremely low impedance, the resultant voltage drop is also low. The effective design allows power to be delivered with the greatest possible efficiency



SIVACON

The SIVACON 8PS LDM busbar system is the innovative alternative to cables for wind turbines and PV stations. It ensures safe, reliable power transmission (800



GRL Low-Voltage Enclosed Busbar Systems

GRL's Low-Voltage Enclosed Busbar System exemplifies these benefits: It eliminates drilling and cuts installation time and cabinet space by up to 60%. Key advantages--such as faster

Guide to Low Voltage Busbar Trunking Systems Verified to BS EN

Busbar trunking systems (BTS) are better suited for power distribution than cables when a low magnetic induction is required, as the BTS construction facilitates the optimum arrangement of conductors to





(PDF) Busbar Design for High-Power SiC Converters

This paper also presents optimized busbar designs for both module-based and discrete device-based SiC high-power converters, comparing various SiC power module packages and

POWER BUSBAR SOLUTION

POWER BUSBAR SOLUTION TE Connectivity's busbar solutions are typically made from aluminum or copper with electrical distribution applications in mind, with the ability to transmit high current power



Busbar Design for High-Power SiC Converters

Busbars are critical components that connect high-current and high-voltage subcomponents in high-power converters. This paper reviews the latest

Closed busbar systems -A unique power distribution

What is an Enclosed Busbar System? An enclosed busbar system is a highly efficient and organized method of electrical distribution, which involves the use of



Catalog Extract LV 10 - 10/2022

Our busbar systems for electrical installations offer a particularly easy way of fitting distribution systems with electrotechnical components. The modular design saves space, while quick assembly contacts



Busbars and Connectors in HV and EHV installations

Insulated Busbars & Trunking Systems In indoors MV and LV installations, namely with high currents and space available is low, busbars may be surrounded by



Contact Us

For datasheets, pricing, or custom telecom energy solutions, please visit:
<https://koskolong.co.za>