



Adam Tas Corridor Energy

Malawi 940nm Laser Diode Model





Malawi 940nm Laser Diode Model



940nm Multimode laser diodes - Sheumann Laser

Multimode laser diodes offer higher output power than single-mode laser diodes. For applications where higher power is required, and beam quality is not as critical.

940nm Laser Diodes , element14 Malaysia

Buy 940nm Laser Diodes. element14 Malaysia offers fast quotes, same day dispatch, fast delivery, wide inventory, datasheets & technical support.



940 nm Laserdiode von 200 mW bis 200 W

Diese fasergekoppelten Einzelmodus- und Multimode-Laserdioden mit 940 nm werden als Lagerware oder zusammen mit einem schlüsselfertigen CW- oder gepulsten Laserdiodentreiber angeboten.



940nm, 10 Watt Laser Diode Fiber Coupled

These 940nm 10W Laser Diodes are known for their high efficiency and robust thermal design



structure. They are designed to yield lifetimes of thousands of hours at full rated power. The 11-pin fiber

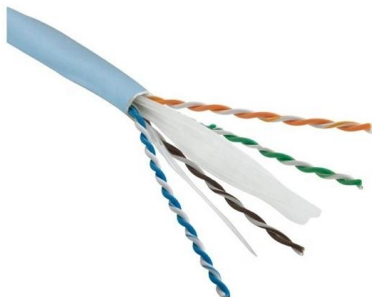


DIODE LASER SYSTEMS, 940 nm

RLTMDL-940 series 80-250 VAC power supply included. Available options: 3 % and 1 % stability, fibercoupling, adjustable power

940nm Single-mode laser diodes - Sheumann Laser

High brightness, quality, and reliability are the foundation of our single-mode laser diode product family. Our 940nm single-mode laser diodes are capable of



DATA SHEET

940NM-50MW-SMF Product Overview This Fabry-Perot laser is offered in a coaxial single-mode fiber-coupled package, with integrated photodiode. The laser is mounted in a heat-sink bracket that allows



940nm Laser Diode, 70W Output Power

Product Overview 940nm Laser Diode , 70W Output Power These high power 940nm laser diodes deliver up to 70W of output power with an emission



940nm laser diode

Laser diodes are classified based on continuous operation - Contact us for any special requests regarding classification or power limitation.



940nm 70W Laser Diode Module

940NM 70 WATT LASER DIODE These 940nm lasers offer up to 70 watts of optical output in both pulsed and CW modes of operation. They are coupled to 105mm fiber with a NA of 0.22. These



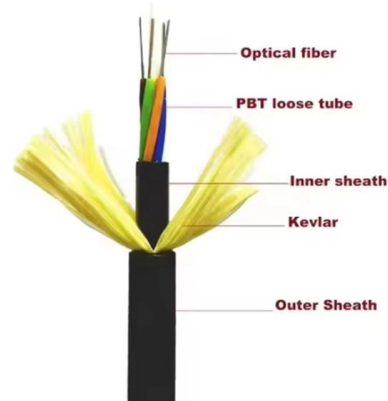
940 nm Collimated Diode Laser System

940 nm IR Collimated Diode Laser System The LRD-0940 Series of Collimated Diode (Semiconductor) Lasers are ideal for applications requiring a wavelength of



VD-0940P-100W-XX-3A0 VCSEL Diode

In its maximum rating diode laser operation could damage its performance or cause potential safety hazard such as equipment failure. 3. Electrostatic discharge is the main reason for the laser fault of

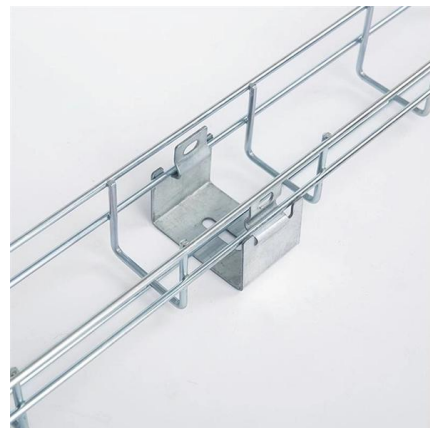


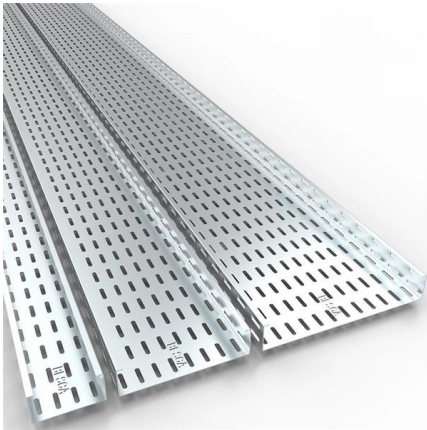
940nm Laser

940nm Laser Features Output Power: 100mW (CW) Efficient Quantum Well Structure Standard TO-5 Package

PN_A231_940 nm laser diode

940nm laser diode Model 1a: 100mW / singlemode fiber / 14 pin Butterfly package / SMF or PMF Reference: 940LD-1a-0-0 (-1: SMF ; -2: PMF)



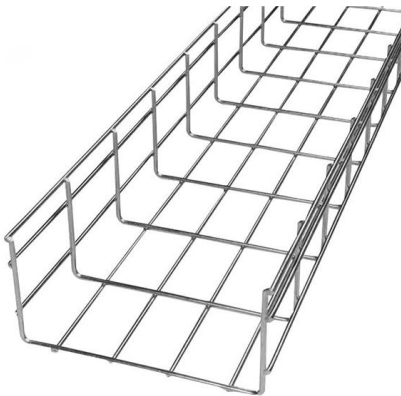
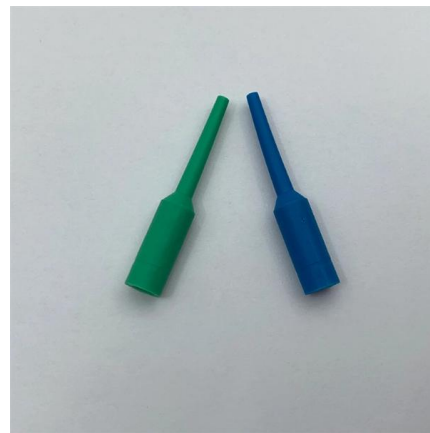


940nm Laser Diode, 100m, Butterfly Package

These single mode fiber-coupled Fabry-Perot laser diodes are centered at 940nm and offer output power up to 100mW. They are offered in an industry standard

940nm Laser Diode, 10W

940nm Laser Diode, 10W Output Power, Multimode Fiber \$ 475.00 SKU: 940LD-2-MM Laser Diode In-Stock Shop all products from AeroDIODE

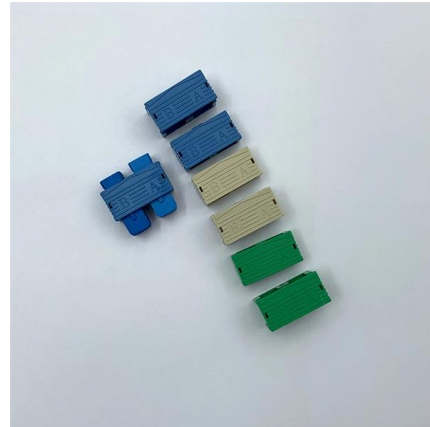


940nm multimode laser diode

Multimode Laser Diode 940nm Multimode Laser Diode Laser diode provided by CNI laser at 940 nm in C-mount package provide state-of-the-art power and brightness. The multimode laser diode, small

AI Dynamic Spot Size 1800W 4D Wavelength 808 Diode Laser Hair

model number Araslite place of origin Beijing, China brand name winkonlaser Technology 4D Laser + Non Crystal + SIFHR Frequency 1- 20Hz wavelength 808nm 755nm 1064nm 940nm Laser Type: 100



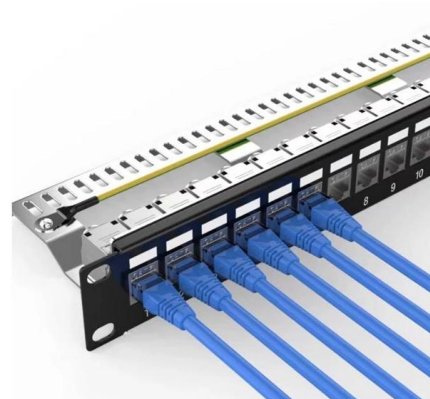
SINGLE BAR DIODE LASER MODULE

SINGLE BAR DIODE LASER MODULE 940 nm, Conduction-Cooled Conduction-cooled single bars are well introduced in the market and are an industry standard in terms of size and footprint.



940 nm laser diode

AERODIODE - Institut d'optique d'Aquitaine - Rue François Mitterrand 33400 Talence - France - Tél. : +33 (0)6 27 69 41 52
contact.aerodiode@aerodiode -



940 nm laser diode from 200 mW up to 200 W - fiber

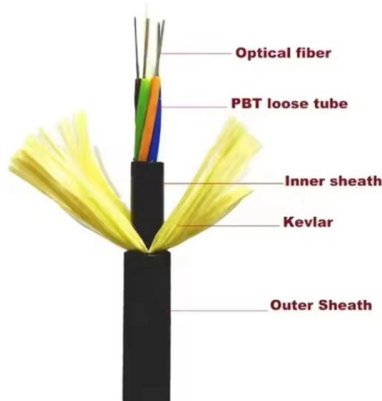
These fiber-coupled 940nm laser diodes are offered as stock items or associated with a CW or Pulsed Laser Diode Driver. They are compatible with our high





940 nm Laser diodes & Turn-key solutions

Choose your own fiber-coupled laser diode + turn-key Driver solution Standard singlemode or multimode laser diodes are offered as stock items or combined with a CW or pulsed turn-key laser diode driver. 1st



940nm Infrared Laser Diode

Sufficient heat dissipation is required for CW operation. Do not operate the device above maximum ratings even short period of time. Doing so may cause unexpected and permanent damage to the

All-Inclusive 10W Laser Diode System, 940nm

These high power 940nm laser diodes deliver up to 10W of output power with an emission bandwidth of 3 nm. The multimode fiber pigtail has a 105µm core, NA



Model Number: APS-940nm-1500mW-MTM-9.0mm-CC

Model Number: APS-940nm-1500mW-MTM-9.0mm-CC APS 1500 mW 940 nm Laser Diode Module With Adjustable Aspheric Collimating Lens Absolute Maximum Ratings at 25 oC



new AeroDIODE product cover sheet 1-8-25

Laser diode pinning: AERODIODE - Institut
d'optique d'Aquitaine - Rue François Mitterrand
33400 Talence - France - Tél. : +33 (0)6 27 69 41
52 contact.aerodiode@aerodiode -



Contact Us

For datasheets, pricing, or custom telecom energy solutions, please visit:
<https://koskolong.co.za>