



**Adam Tas Corridor Energy**

# **Mali Single-Fiber Bidirectional 10G**





## Overview

---

Our 10G BiDi SFP+ 80km transceiver provides ultra-long single-fiber reach using Tx1490nm/Rx1550nm wavelength technology. Delivering robust 23 dB link budget over 80km single-mode fiber, this 10G BiDi module enables carrier-grade long-haul applications. By using bidirectional (BiDi) wavelength division, these modules send and receive. The 10G BiDi SFP+ module will give you the ability to do just that, allowing you to have high-speed, bi-directional (sending and receiving) communication over a single strand of fiber sized for 10G. This article delves into the technical details, real-world applications, and selection criteria for BiDi SFP+ transceivers, guiding.



## Mali Single-Fiber Bidirectional 10G

---

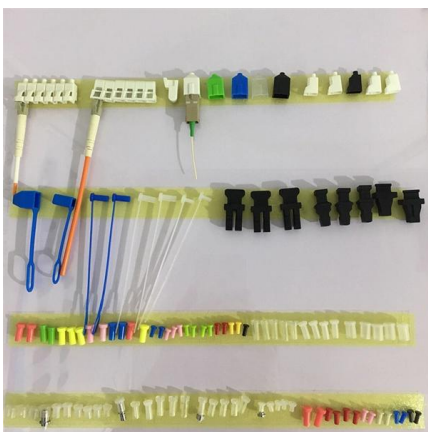


### Everything You Need to Know About 10G Duplex XFP Optical

In the fast-paced world of networking, 10G Duplex XFP (10-Gigabit Small Form-factor Pluggable Extended) optical transceivers are critical components for enabling high-speed, long

### SFP-10G-BXD1 (Single-Fiber-Bidirectional Module)

Single-fiber bidirectional (BiDi) optical modules must be used in pairs. For example, SFP-10G-BXD1 must be used with SFP-10G-BXU1. Translation Favorite Download Update Date:2019-05-16



### SFP+ BiDi 10G Guide: Single Fiber 10G Optical Transceivers

Learn what SFP+ BiDi 10G is, how single-fiber 10G transceivers work, key specs, use cases, and how to choose the right BiDi module.

### How Single Fiber Transceivers with BiDi SFP+ Save Fiber in Modern

Explore how single fiber transceivers like BiDi SFP+ save fiber infrastructure with bidirectional



optics in data centers and enterprise networks.



### SFP-1100-WB SFP+ 10G BiDirectional Optical Module

The SFP-1100-WB is a BiDirectional single fiber strand 10G SFP+ optical module using Tx:1550nm and Rx:1490nm wavelengths and supporting links up to 100Km



### The Ultimate Guide to SFP Modules (2026): Types,

Confused by SFP vs SFP+? Read the definitive 2026 guide on SFP modules. We explain Single Mode vs Multimode, DDM diagnostics, and how to choose the right



### The Complete Guide to BiDi Transceiver

BiDi variants are also available in the XFP form factor for 10G. The 25G BiDi transceiver provides 25GBase-BX throughput up to 40km over single





## **SFP+ BiDi 10G Guide: Single Fiber 10G Optical Transceivers**

SFP+ BiDi 10G is a proven and efficient solution for delivering 10-gigabit connectivity over a single strand of single-mode fiber. By using bidirectional wavelength transmission, it helps organizations



## **10G BiDi SFP+ Modules: A Guide to Single-Fiber 10G**

This guide takes a deep dive into how the 10G BiDi SFP+ supports fiber savings, lessens complexity in deployment, and reduces costs to you and your customers.

## **SFP+ 10G BIDI Tx1330/Rx1270nm 60KM**

This module utilizes bidirectional (BiDi) technology, allowing simultaneous transmission and reception of data on a single fiber, effectively doubling the capacity of existing fiber infrastructure.



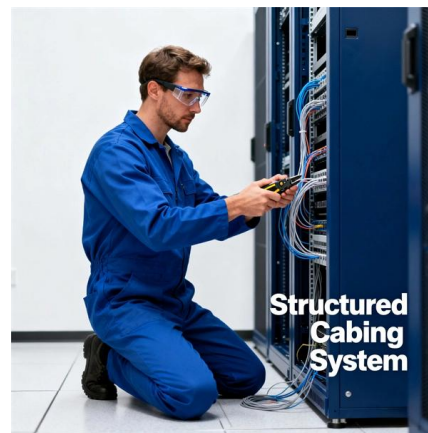
## **10G BiDi SFP+ 80km , Tx1490/Rx1550 , Single Fiber**

Delivering robust 23 dB link budget over 80km single-mode fiber,



### Ubiquiti 10Gbps Bidirectional Single-Mode Optical

The 10 Gbps Bidirectional Single-Mode Optical Module, model UACC-OM-SM-10G-S-2, manufactured by Ubiquiti, is an advanced optical transceiver designed for



### Guide to 10G BiDi SFP+ Optical Transceivers Modules(2025)

Our 10G BiDi SFP+ Optical Transceivers Modules deliver full 10 Gb/s over a single strand of single-mode fiber, halving fiber count and simplifying cable management.



### 10G Bidirectional Single-Mode Optical Module

SFP+ transceiver that supports 10G connections up to 10 km using single-mode fiber with a simplex LC UPC connector.





## SFP-10G-BXU1

Supports the single-fiber bidirectional function. Single-fiber bidirectional (BIDI) optical modules must be used in pairs. For example, SFP-10G-BXU1 must be used with SFP-10G-BXD1.

## 10G BiDi XFP 10km Side A , Single Fiber , EDGEOPTIC

10G BiDi XFP Side A: 1270/1330nm, 10km single fiber, 8dB budget. Cost-effective WDM solution, multi-rate 1.24-11.32 Gbps. Pair with Side B.



Integrated Aluminum Alloy Die Casting



Durable and Secure Metal Screws



## Learn About 10G BiDi SFP+ Optical Transceivers , Carritech Optics

10G BiDi SFP+ optical transceivers are compact, hot-pluggable modules that enable bidirectional 10Gbps communication over a single strand of fiber. They achieve this by using two

## What is 10G BIDI SFP+ Single-fiber Bidirectional ?

10G BIDI SFP+ optical module is packaged in SFP+, with a transmission rate of 10G, LC simplex interface, and a transmission distance of up to 80 kilometers when used with single-mode



## 10G Bidirectional SFP+ Optical Transceiver

10G Bidirectional SFP+ Optical Transceiver Short Description: Product description Maximize your network efficiency with our high-performance 10G bidirectional



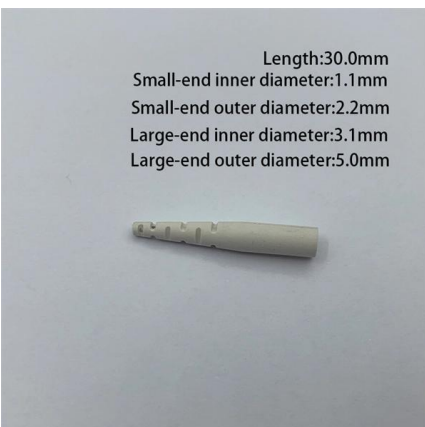
## FS SFP-10G-BX: High-Performance Long-Distance

Boost your network with FS SFP-10G-BX: a reliable, low-power 10G BiDi SFP+ module supporting 10km single-fiber links and broad compatibility.



## Comprehensive Guide to FS 10G BiDi SFP Modules

10G BiDi SFP+ modules utilize a unique optical mechanism that enables full-duplex data transmission over a single strand of single-mode fiber (SMF). This is achieved using two different





### Custom 10G BiDi SFP+ MODULE, Tailored Simplex

?esto postavljana pitanja Q1: Why must 10G BiDi modules always be purchased and deployed in pairs?A: BiDirectional (BiDi) modules utilize WDM technology to transmit and receive over a single



### Learn About 10G BiDi SFP+ Optical Transceivers , Carritech Optics

As the demand for high-speed and efficient data transmission grows, 10G BiDi SFP+ (Bidirectional Small Form-factor Pluggable Plus) optical transceivers have emerged as an innovative

### 10G BiDi SFP+ 10km , Tx1330/Rx1270 , Single Fiber Compatible

Compatible 10G BiDi SFP+ for 10km single fiber. Tx1330/Rx1270nm, 6.2dB budget, 50% fiber savings. Works with 80+ brands.



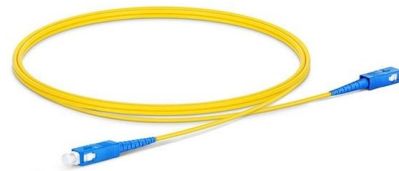
### Custom 10G BiDi SFP+ MODULE, Tailored Simplex

?????? ??????? ??????????? Q1: Why must 10G BiDi modules always be purchased and deployed in pairs?A: BiDirectional (BiDi) modules utilize WDM technology to transmit and receive over a single



## 10G Bidi SFP+ Modules Selection Guide

Bidirectional (Bidi) optical modules are the ingenious solution, allowing data transmission and reception over a single fiber strand. This guide cuts



## 10G Bidi SFP+ Modules Selection Guide

Choose the right 10G Bidi SFP+ Modules by checking compatibility, distance, wavelength pairing, and reliability for optimal network performance.

## 10G Simplex Bidirectional SFP+ Module , Single Fiber WDM

The 10G SFP+ simplex bidirectional module delivers 12.5Gbps data rates over single mode SMF, reducing fiber infrastructure costs by 50% compared to duplex solutions.





## Contact Us

---

For datasheets, pricing, or custom telecom energy solutions, please visit:  
<https://koskolong.co.za>