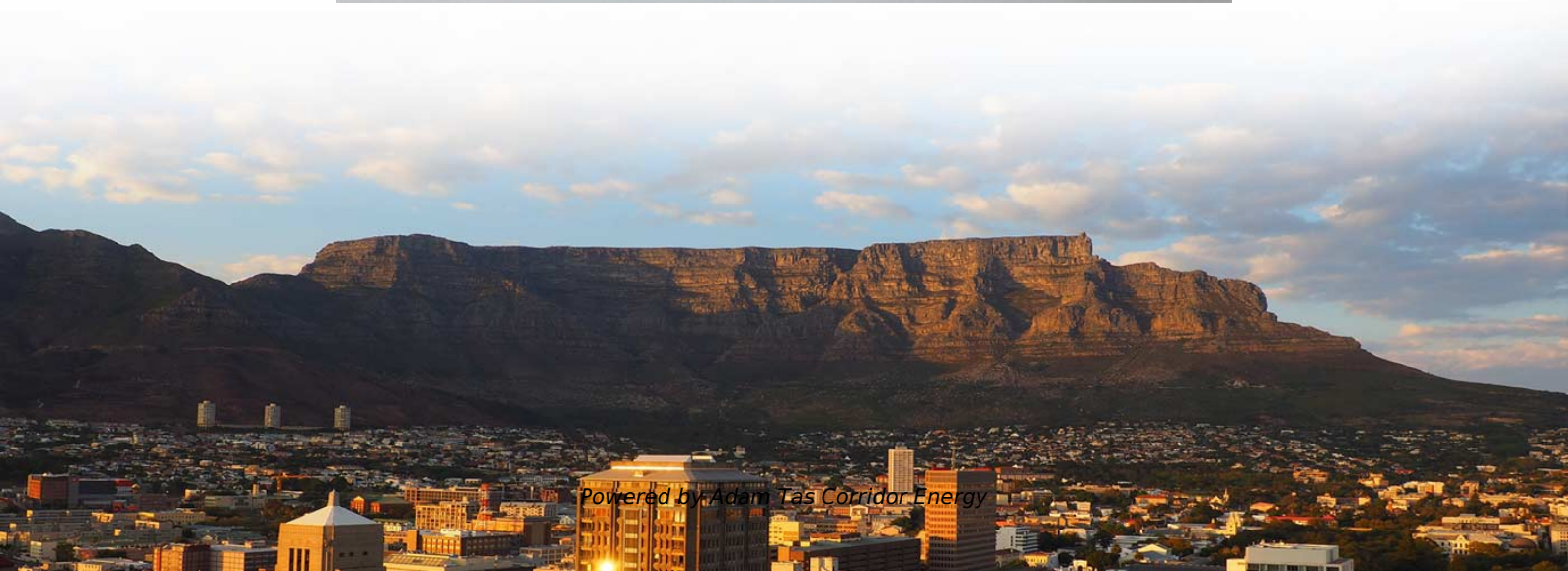




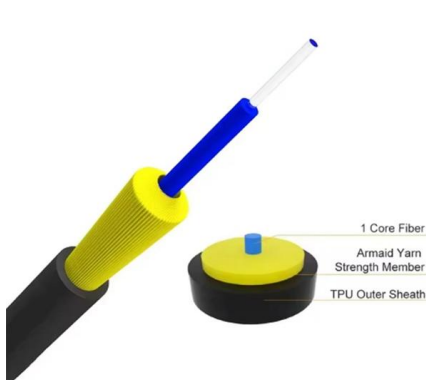
Adam Tas Corridor Energy

Material Requirements for Low-Voltage Cable Trays





Material Requirements for Low-Voltage Cable Trays

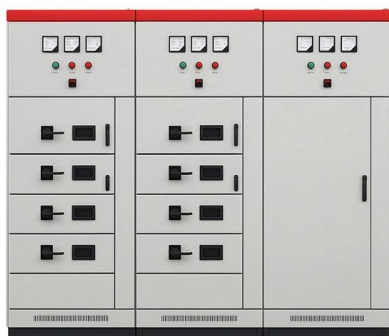


Annex I

By convention, to avoid any misunderstanding and to simplify the cable tray design and installation, the bending radius for all cable trays and conduits should be at least 300 mm for Low Voltage, Sensitive

Selecting the right materials for cable tray use at low temperatures

Aluminum, fiberglass, steel, and stainless steel are all readily available materials for cable tray manufacturing. These materials perform very well at ambient temperatures (0°F to 100°F). However,



Low Price Vertical Cable Tray Customizable Cable Parts , Alibaba

Buy low-price vertical cable tray with customizable options starting at \$0.95 per unit. Available in various materials, ideal for solar cable management and industrial use.

Cable Tray Technical Guide A practical guide to product selection and

Cable Tray Technical Guide A practical guide to



product selection and installation This guide for engineers and installers has been developed by ABB as a practical reference regarding cable tray



B-Line series Cable Tray Design Considerations

Cable tray must be capable of supporting not just the weight of the cable, but also the weight of any equipment or materials attached to the cable tray. Additionally, dynamic environmental elements



12-SDMS-06

Scope This SEC Distribution Material Specification requirements for design, materials, manufacturing, indoor/outdoor Metallic Cable Tray System, intended to be used in the distribution network of the



Selecting Cable Trays: A Complete Guide for Cable

Step 1: Define Cable Parameters and Classify Load The first step involves a detailed analysis of the cable inventory to determine the tray's





Wire Mesh Cable Trays Technical Information Detailed,

A job site, field adaptable support system primarily for low voltage telecommunication and fiber optic cables. These systems are typically steel wire mesh, zinc plated.

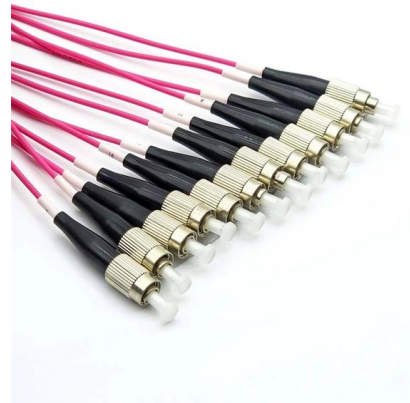


How to Choose Cable Tray for Low Voltage System

Discover a professional 5-step guide on how to choose the right cable tray for low voltage system. Learn about types, sizing, standards for reliable

LEGRAND CABLE TRAYS TECHNICAL GUIDE

Specifies requirements for metal cable trays and associated fittings designed for use in accordance with the rules of Canadian Electrical Code, Part I and the National Electrical Code®



Ultimate Guide to Cable Tray Selection - Types,

Learn how to choose the best cable tray system for your needs. Explore types, materials, installation tips, and NEC compliance in this expert guide.



Cable Pulling Cable Laying , Cable Rollers , Cable Drum

Low, Medium & High Voltage Cables LV MV HV Pulling & Cable Drum Handling Equipment Thorne & Derrick supply UK and international contractors responsible



Guide to cable support systems

Four different mesh cable tray types are available, depending on the requirements, area of application and cable quantity. The innovative Magic connection system of the GRM and G-GRM mesh cable

Cable Tray , Wire Mesh, Ladder Tray and More Wire Management

Cable trays and baskets are designed to help support and route cable bundles in an organized manner along ceilings or walls. Shop for cable tray systems now.





Bend cable tray

Bend Radius The bend radius is a crucial design parameter that directly affects cable protection and longevity. A properly sized bend radius prevents kinking, crushing, or excessive tension on

NEC 2026 Article 720: Limited-Energy Requirements

Article 720 establishes the general wiring methods and materials requirements for all limited-energy systems in the 2026 NEC. It consolidates rules



Buy Galvanized Steel Cable Tray 4k+ , Alibaba

Durability and Material of Galvanized Steel Cable Tray The galvanized steel cable tray is an essential component in modern electrical infrastructure, widely used for organizing, supporting, and protecting

Cable Tray Systems: Requirements and Best Practices

Comprehensive guide to cable tray systems requirements: tray types, materials, loading, supports, bonding, routing, and best practices for safe electrical cable management.



Codes and Standards , Cable Tray Institute

Covers construction and test requirements for continuous, complete nonmetallic systems of ladder, ventilated, solid bottom cable trays, or channel type trays, intended for the support of power or



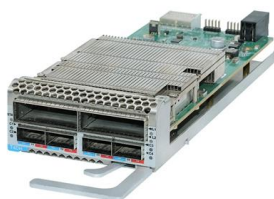
Cable Tray SHIB NAL

The type of cable tray (e.g., solid, ventilated), ampacity (current-carrying limit) requirements, and the type and voltage rating of cable used determines the allowable fill for each cable tray.



Cable Tray Systems: Requirements and Best Practices

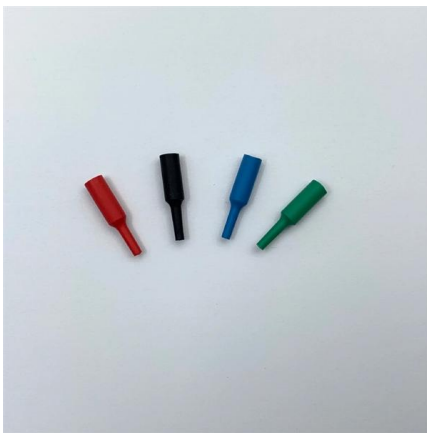
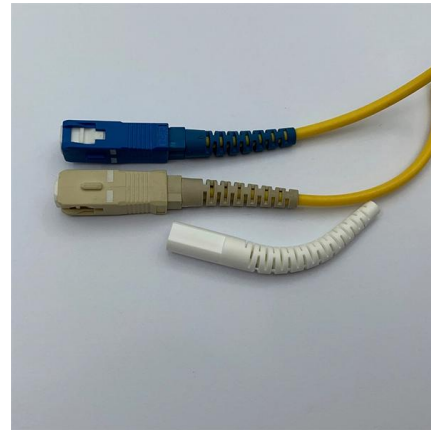
This article explains the main requirements and good practices for cable tray systems, including tray types, materials, loading, supports, bonding, cable selection, and installation details.





GUIDE CABLE TRAYS TECHNICAL

Specifies requirements for metal cable trays and associated fittings designed for use in accordance with the rules of Canadian Electrical Code, Part I and the National Electrical Code®



Wholesale 90 Degree Cable Tray Elbow Galvanized Fireproof Material

Types of 90-Degree Cable Tray Elbow A 90-degree cable tray elbow is a critical component in electrical installations, enabling smooth directional changes in cable routing systems. These elbows ensure

Contact Us

For datasheets, pricing, or custom telecom energy solutions, please visit:
<https://koskolong.co.za>