



Adam Tas Corridor Energy

Material of the Distribution Box Mounting Plate





Overview

Stainless steel: is used to protect and protect electronic components and prevent their manipulation. * For different colours and thickness, please r
DETAILS
The metal distribution box is designed for a wide range of low-voltage applications in residential buildings, commercial complexes, offices, and industrial facilities. It is suitable for environments requiring high mechanical durability, enhanced corrosion resistance, and reliable operational. Mounting plates as additions to enclosures and cases where a mounting plate is not included in the scope of supply. Constructed from high-quality cold-rolled steel and finished with a durable powder coating, this enclosure provides excellent protection against.



Material of the Distribution Box Mounting Plate



Step-by-Step Guide to Install MCB Distribution Box

Learn how to safely install an MCB distribution box with this comprehensive guide. Step-by-step instructions to ensure correct installation.

Mounting Plates Power Distribution, BMP , nVent HOFFMAN

The steel mounting plate contributes to speeding up the assembly of the terminal box since it can be machined easily and equipped with components before being mounted.



An Ultimate Guide for Metal Distribution Boxes

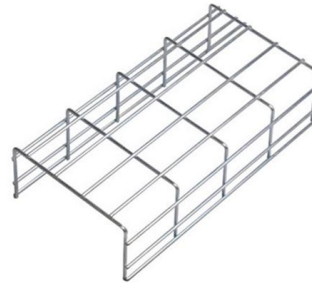
This article guides readers to know advantages of metal distribution box compared with plastic ones and safety measures are also included.

Stainless Steel Distribution Box Mounting Plate

Stainless Steel Distribution Box with Inner-Outer Door is constructed by bending and welding



SUS304 stainless steel plates, featuring an inner door design and a double-sloped top.

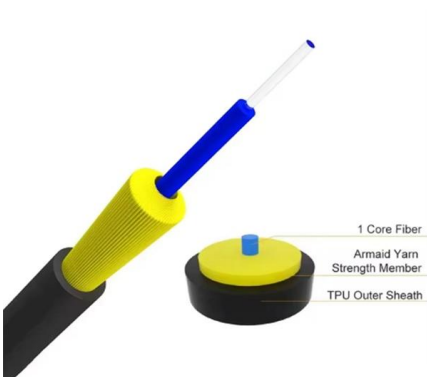
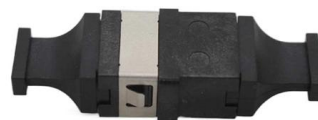


Enclosure Mounting Plate: A Complete Guide

Enclosure mounting plate is one of the primary criteria checked to score a material's compliance with standards. Since mounting plates secure other

Accessories for mounting and junction boxes

The accessories for mounting and junction boxes form together with the boxes and the piping material a wide range of products that help the installer.



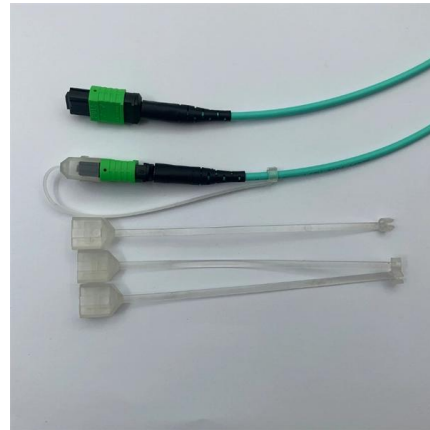
Distribution Boards

System Description Mirage Removable top and bottom plates They are provided for ease of installation and cabling. CT provision Thanks to the separate copper terminals, Mirage allows easy installation of



How to Install a Cable Distribution Box Safely and

Understanding Cable Distribution Boxes Types and Application Scenarios of Cable Distribution Boxes The core function of the cable distribution



ABC Distribution Box

The three-phase distribution box is designed accept incoming conductors with a maximum size of 120mm² and 9 service cables of up to 35mm². Will suit CNE or SNE type cables.

Mounting plates

Mounting plates as additions to enclosures and cases where a mounting plate is not included in the scope of supply. Partial mounting plate and partial installation plates for Rittal enclosure systems



How to Install a Junction Box Mounting Plate

Comprehensive guide to selecting the correct material and size for your junction box mounting plate, ensuring secure and organized component installation.



Mounting Plates

Stainless steel: is used to protect and protect electronic components and prevent



Technical catalogue Distribution Box

Material: High-strength Q195 cold-rolled steel plate, providing excellent rigidity and minimizing deformation under load or during cable overheating. Protection Degree: IP30, suitable for indoor

Requirements And Specifications For Installation Of

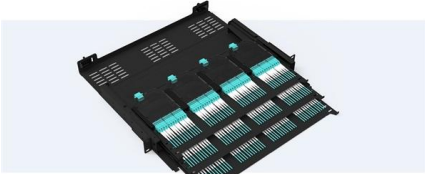
In flammable and explosive environments, explosion-proof distribution boxes should be selected and explosion-proof treatment should be carried out.





Pre-Terminated Patch Panel

- Standard 19" width
- Max 144 fibers in 1U
- Ultra-High Density Ready



Dual-sail, easy install & maintain



Lightweight ABS MPO cassette



Premium sheet metal with matte coating

Mounting plates for distribution board

4TBO851190C0100 ABB AP1MHP APO 1
MOUNT.PLATE (PERTINAX) compare USD13.62
Out of Stock - Backorder

Steel Distribution Boxes

The enclosures are fabricated using Electro Galvanized sheet material, which offers robust protection to the internal equipment against external factors such as



Wall Mount PVC MCB Distribution Box with Mounting Plate, White

This wall-mount PVC MCB distribution box is a professional-grade electrical housing solution designed for reliable circuit breaker installation. The sleek white enclosure features a sturdy mounting plate

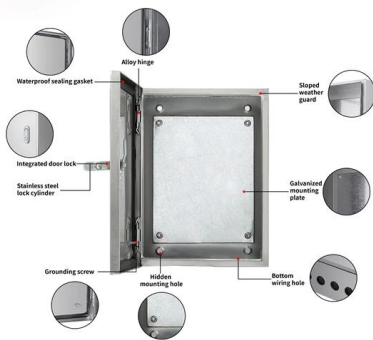
TECHNICAL SPECIFICATION FOR LT DISTRIBUTION BOX

KV 1. DESCRIPTION OF MATERIALS:- The L.T. Distribution Cabinets shall be installed on D.P. Structure for Plinth Mounted 33/.4 KV Substation of the ratings indicated above. These Distribution



ABC Distribution Box

ABC Distribution Box Rated 240/415v Slim-line compact model designed for wall or pole mounting. Manufactured from a glass filled U V stable flame retardant material, the unit fully meets the



Metal electrical distribution box with IP65 protection for

IP65 environmental protection, which allows the distribution box to be installed outside. Completely empty box, except for a mounting plate fixed to the bottom of



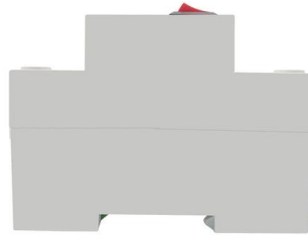
The Box Material Of The Distribution Box Is Generally

The strength and corrosion resistance of steel plate make it a common material for the box of the distribution box, and its good conductivity also



Distribution Box: Types and Functions , Axis-Electricals

A distribution box ensures that electrical supply is distributed in the building, also known as a distribution board, panel board, breaker panel, or electric panel.



What Are the Main Materials Used in Distribution Boxes

Distribution box material options include steel, aluminum, PVC, polycarbonate, and SMC, each offering unique benefits for safety and durability.

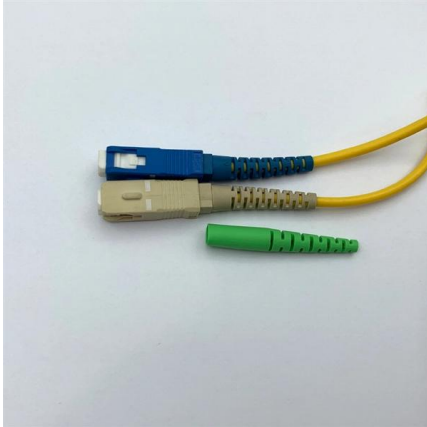
Powder-Coated Steel Distribution Box

Constructed from high-quality cold-rolled steel and finished with a durable powder coating, this enclosure provides excellent protection against dust, dirt, and



Understanding Distribution Boxes: A Comprehensive Guide

Distribution boxes can be classified in different ways depending on the installation environment, enclosure material, and mounting method. In



Detailed analysis of the material quality requirements of

1. Shell material: The shell of the distribution box is usually made of steel plate. The material requires high hardness and strength, good corrosion resistance, and



Contact Us

For datasheets, pricing, or custom telecom energy solutions, please visit:
<https://koskolong.co.za>