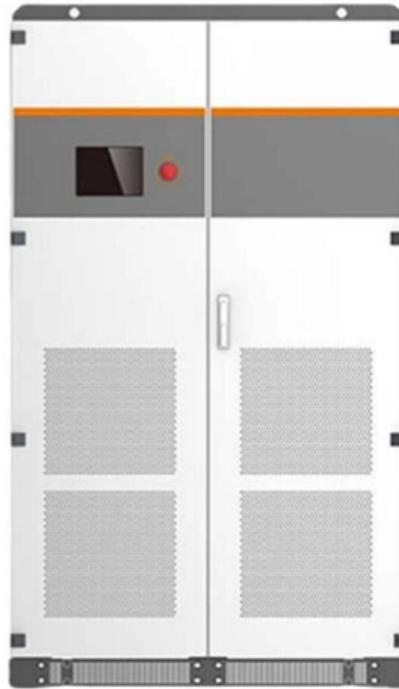




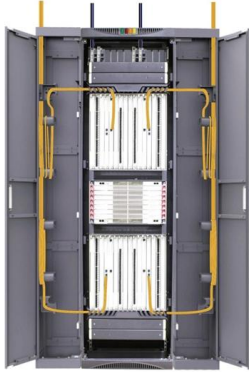
Adam Tas Corridor Energy

Methods for making right angles in cable trays





Methods for making right angles in cable trays



cable tray and trunking for electricians (Page 1) / Help

By applying the following formula you can quickly find the size of cut out section that you need to cut out of the side of the cable tray, or gutter-type

How to make a 0-90° vertical angle for cable trays?

Elbow joint RVS is pushed inside the cable tray and attached with the included screw set. Elbow joint RVS can be used to change a cable tray's horizontal orientation



Trunking Cutting Techniques Guide , PDF

The document provides instructions for forming various bends and joints in electrical trunking and cable trays. It describes: 1) How to mark and cut a right-angle

Complete cable tray manual for electrical engineers and

How to design cable tray? Most projects are roughly defined at the start of cable tray design.



For projects that are not 100 percent defined before design start, the cost



Make a 90 Bend in Electrical Cable Tray

The Easy Guide to How to make a 90 electrical cable tray bend to measurement of your choice. Great if you are new or just forgot how to do it, this easy

How to Produce Cable Trays: A Comprehensive Guide

Discover the detailed process on how to produce cable trays, covering everything from material selection to assembly and surface treatment.

LoRawan outdoor base station



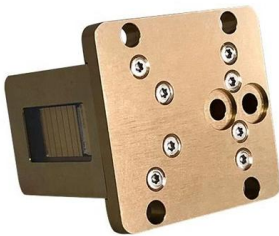
GUIDE CABLE TRAYS TECHNICAL

NEMA VE 1-2017 Specifies requirements for metal cable trays and associated fittings designed for use in accordance with the rules of Canadian Electrical Code, Part I and the National Electrical Code®



cable tray and trunking for electricians (Page 1) / Help

You have used your protractor and worked out you need to make a 22° angle in a 600mm cable tray. By applying the following formula you can



Master the Cable Tray Secret to Perfect Back of Bend

How to Master back of bend measurements on electrical Cable Tray. Make a 90 electrical cable tray bend to measurement with a gusset of your choice using one piece of tray.

Cable Tray Technical Guide A practical guide to product selection and

A practical guide to product selection and installation This guide for engineers and installers has been developed by ABB as a practical reference regarding cable tray characteristics, installation, and



Make a (45-45) 90 Gusset Bend in Electrical Cable Tray In One Piece

How to make a 90 electrical cable tray bend to measurement with a gusset of your choice using one piece of tray. Great if you are new or just forgot how to do it, this easy to follow guide makes



electrical #cable tray# making 90,° elbow

Creating a 90-degree elbow in an electrical cable tray, often called a "fabricated" or "mitered" bend, involves cutting, bending, and fastening a straight section of tray. The most common method



Installation Guide

Installation Guide WBT has pioneered the innovation of cabletray/basket tray in the last decade. Products such as Shaped Tray, PreForm, WBTForm and NoSplice have allowed users and installers

7 Types of Cable Trays: How to Choose the Right One

Cable tray systems are engineered support structures designed to route, support, and protect insulated electrical cables used for power distribution,





Let's talk Cable Tray Offsets (not basket tray)

So, I've done a few cable tray offsets in my time, but I just wing it every time. I would like to learn the logic in determining lengths for offsets, both sideways or vertically.

CUTTING GUIDELINE

Where products have to be cut at irregular distances, we recommend having the open cut end placed inside where possible (I.e. open ends of support inside the starter bracket, open ends for ladders and



Best Practice Guide to Cable Ladder and Cable Tray Systems

This guide covers cable ladder systems, cable tray systems, channel support systems and associated supports intended for the support and accommodation of cables and possibly other electrical

How to make an adjustable angle for a cable tray?

The adjustable corner piece SRS is pushed inside the cable tray and attached with the included screw set. The range for adjustable corner piece SRS is 0-75°.



Efficient Cable Tray Installation Methods for Organized

Discover efficient methods for installing cable trays to organize power, data, and security cables. Explore wall, ceiling, and floor mounting options

How to make a 90° angle, T-intersection and X-intersection for cable

Corner pieces RS90 are used to make a 90° angles for KR-type cable trays. Jointing of RS90 corners to cable trays is fast and easy, because corners have joint slats already at place.



Guide to cable support systems

Four different mesh cable tray types are available, depending on the requirements, area of application and cable quantity. The innovative Magic connection system of the GRM and G-GRM mesh cable



Bending Cable Tray

You can buy a manufactured 90 degree bend or make one on a cable tray bending machine but in this video I show you how to make one using a metal

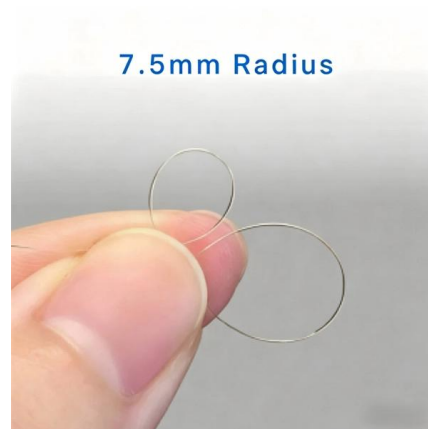


CUTTING GUIDELINE

Introduction Oglænd System manufacture and deliver Multidiscipline modular bolted support systems, cable trays, cable ladders and accessories for complete installation and containment of Instrument,

Bending Cable Tray

You can buy a manufactured 90 degree bend or make one on a cable tray bending machine but in this video I show you how to make one using a metal bar.



Best Practices for Installing Cables in Trays

Learn the best practices for installing cables in trays. This guide covers essential steps, technical requirements, and key details for efficient cable



Contact Us

For datasheets, pricing, or custom telecom energy solutions, please visit:
<https://koskolong.co.za>