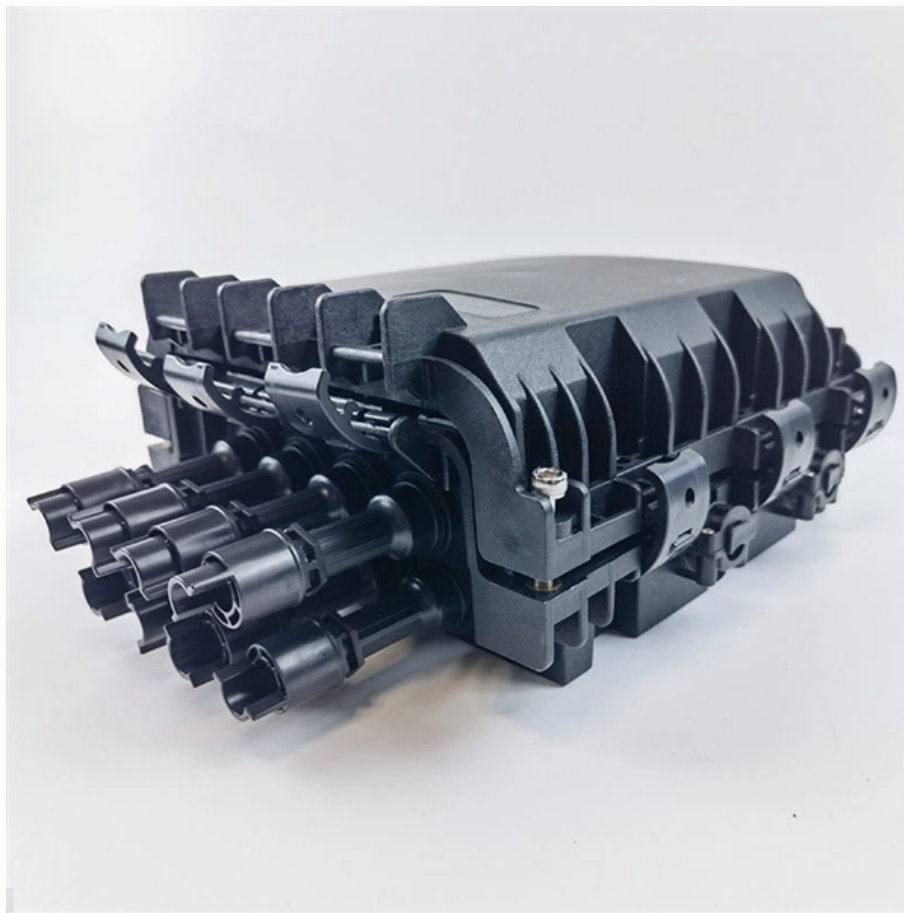




**Adam Tas Corridor Energy**

# **Methods to prevent cable trays from swaying**





## Overview

---

Smooth Turns are Key: Remember that bending radius we talked about?

At every turn in the cable tray, we need to make sure the cables aren't bent too. A rung spacing of 6 to 9 inches (150 to 230 mm) is preferable when the cable tray is used for instrumentation and control applications that require. Steel cable trays form the backbone of organized and efficient electrical wiring in industrial, commercial and infrastructure projects. One of the most popular applications for Speed Link is to support cable management systems such as wire basket tray, cable tray and cable ladder. It also offers future-ready ideas, troubleshooting guidance, and useful suggestions to guarantee your cable systems. When cable trays pass through walls from indoors to outdoors, rainproof measures should be taken on the outside of the wall.



## Methods to prevent cable trays from swaying

---

### How to Avoid Damaging Cables During Cable Tray

Learn expert tips on how to avoid damaging cables during cable tray installation. Our guide covers planning, installation, and maintenance for cable



### 100+ Essential Questions Answered About Cable Trays:

Discover over 100 expert answers about cable trays, covering key topics like material selection, load capacity, installation methods, and maintenance.



### The Best Cable Management Solutions: Advantages of

Cable Management Tray Placed Under the Table  
One of the simplest methods to prevent cable trays from piling up behind your workstation and on the



### Precautions for Cable Tray Installation

We have summarized the precautions for cable tray installation to help customers quickly and



correctly install cable trays.

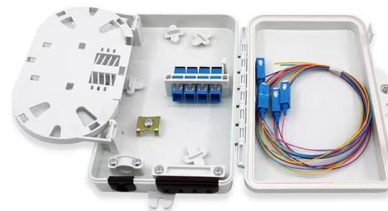


## Best Practice Guide to Cable Ladder and Cable Tray Systems

This guide covers cable ladder systems, cable tray systems, channel support systems and associated supports intended for the support and accommodation of cables and possibly other electrical

## Best practice guide to cable ladder and cable tray

Cable ladder and cable tray systems The following recommendations are intended to be a practical guide to ensure the safe and proper installation of



## Cable Tray Failures: Types, Causes, and Prevention

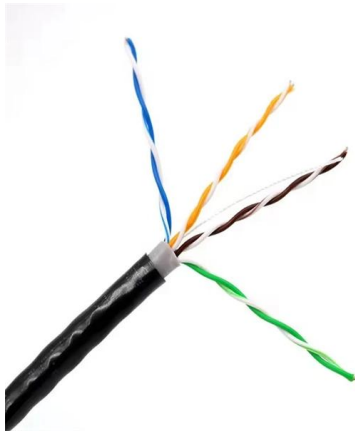
However, like any other infrastructure, cable trays are prone to failures that can result in serious safety hazards, financial losses, and downtime.





## Ensuring Structural Stability in Cable Tray Systems

Learn how to ensure cable tray structural stability with design, installation, and maintenance tips to prevent downtime, accidents, and system



## Cable Tray Mistakes To Avoid , Cable Tray , Cable Tray

Cable tray systems are structures designed to uphold cable runs on flat or sloped roofs. Traditionally, facilities have chosen to bundle cables and rig

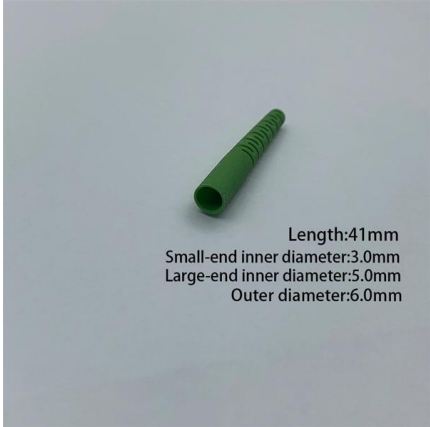
## A Guide to Installing and Supporting Electrical Cable Trays

A professional guide to installing electrical cable tray systems per NEC Article 392. Covers support, securing cables, and fill calculations.



## How to Manage Cables in Cable Trays: Principles and Methods

Learn how to manage cables in cable trays effectively with our comprehensive guide for cable classification, protection, and installation to ensure electrical system safety and efficiency.



### How to Prevent Cable Damage in a Wire Mesh Basket Tray , CMW

By choosing the right materials, planning your routing carefully, and using tray accessories like dividers, bends and covers, you can significantly reduce the risk of cable damage

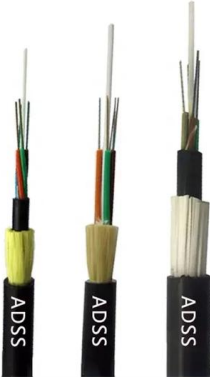


### Cable Tray Support Solutions: Safety, Compliance, and

Cable trays are an essential part of modern industrial infrastructure and civil construction. With the rapid development of electrification and information

### TECHNICAL HANDBOOK

The Speed Link SLK System can also be installed at 45 degree angle, as shown below, to provide support and prevent unwanted sway from the load. The benefit of this setup is that it serves as





## Precautions for Cable Tray Installation

Cable Tray Installation Guide The correct installation of cable trays is crucial for establishing a reliable and efficient cable system. It ensures that cables are



## Cable Tray Transportation: Essential Methods and Best

Explore various cable tray transportation methods, including road, rail, water, and air transport for safe and cost-effective cable tray logistics in this



## Why Cables Sag in Wire Mesh Baskets or Cable Trays , CMW

Let's get straight to it, why are your cables sagging in a wire mesh basket or cable tray? It usually comes down to one (or a combo) of the following: lack of proper support spacing,

## Common Cable Tray Failures and How to Resolve Them

This guide discusses common cable tray problems, from loosening and corrosion to grounding issues and installation errors, along with strategies for





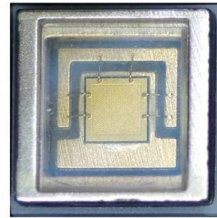
## Best Practices for Installing Cables in Trays



Learn the best practices for installing cables in trays. This guide covers essential steps, technical requirements, and key details

## How to Fix Common Cable Management Issues using

This comprehensive guide investigates the most frequent wire management challenges faced in real-world setups and demonstrates how the



## Common Issues in Steel Cable Tray Installations

Use appropriate support hardware designed for the specific tray type and load. Conduct alignment checks during installation and use proper fastening

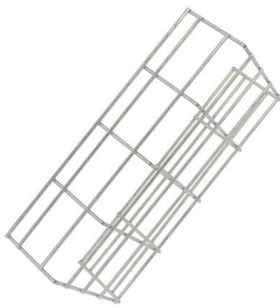
## Best Fixing and Mounting Options for Cable Trays , CMW

Regarding cable management, the fixing and mounting you choose for your cable trays can make or break your setup. Whether you're managing voice, data, or electrical cables, ensuring



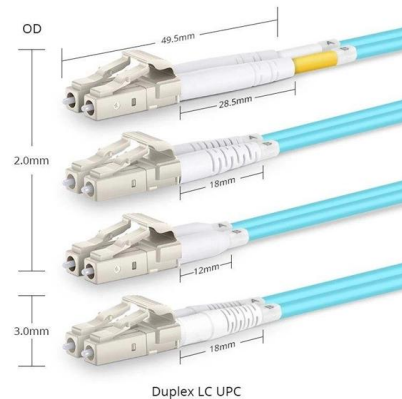
## Everything You Need to Know About Cable Trays , Cable Trays

Discover the different types of cable trays, their many benefits when used in electrical wiring and network cabling, installation processes, and essential maintenance tips for keeping your



### Cable Tray Technical Guide A practical guide to product selection and

**SOLID-BOTTOM CABLE TRAY** Providing additional cable protection, solid-bottom cable tray is sometimes preferred to support and protect numerous small instrumentation and control cables.



Duplex LC UPC

### Avoiding Mistakes in Cable Tray Installation

Businesses can improve cable tray performance by carefully designing the layout and predicting future requirements. It also decreases safety





## **Cable Tray Technical Guide A practical guide to product selection and**

The choice of method should be discussed with a local inspector. The best decision may be to extend only the cables, creating a discontinuity in the cable tray.



## **Enhancing Workplace Safety with Cable Trays , Reducing Hazards**

Improve workplace safety by reducing hazards and accidents with the installation of cable trays. Learn about the benefits, best practices for installation, and maintenance tips that can help

## **Contact Us**

---

For datasheets, pricing, or custom telecom energy solutions, please visit:  
<https://koskolong.co.za>