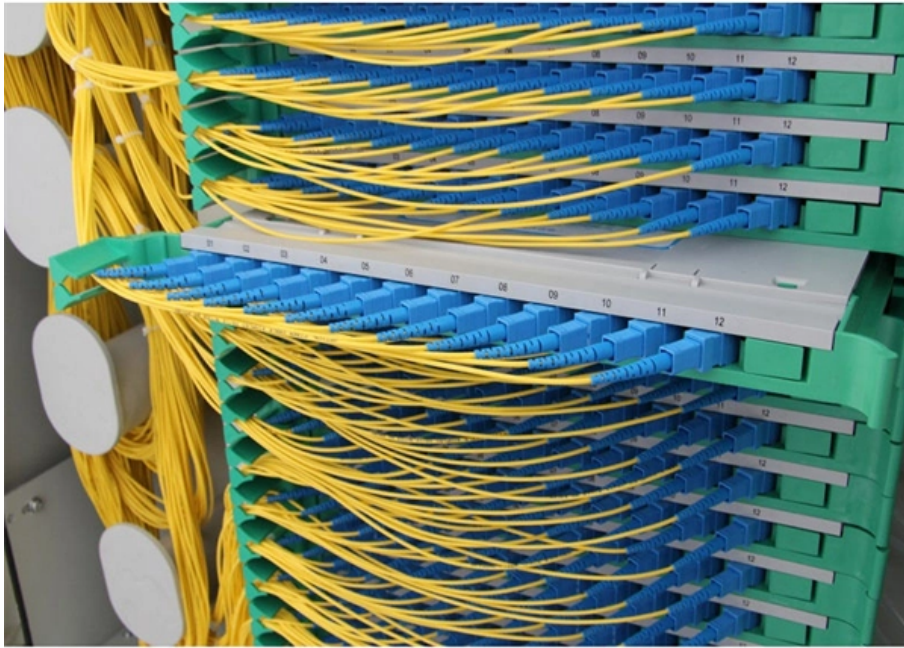




Adam Tas Corridor Energy

Mi Home Switch PoE Power Supply



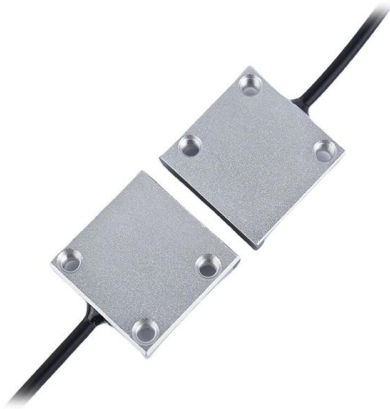


Overview

Standards-based Power over Ethernet is implemented following the specifications in IEEE 802.



Mi Home Switch PoE Power Supply



MPS Power Management Solutions for Power over

In this article, we reviewed the PoE switch power structure and three types of power supply adapters. We also covered MPS power solutions for switches and

Power over Ethernet (PoE) Products

We offer an end-to-end portfolio of Power over Ethernet (PoE) solutions comprising PoE ICs and PoE systems such as PoE midspans, PoE



Everything You Need to Know About PoE Power

With a PoE power supply, you can transmit data and power to a powered device over a single Ethernet cable. This eliminates the need for

PoE: A Comprehensive Guide to Power Over

Explore the essentials of Power Over Ethernet (PoE) with Phihong USA. Your trusted source for



innovative PoE solutions and technologies.



Understanding Power over Ethernet (PoE) and Power over Ethernet Plus (PoE+)

PoE allows you to supply power to a networking device using the same cable that transmits the data. If you connect a PoE-enabled Ring device to a PoE-capable switch, router, or injector, the device will



How to Power Almost Any Smart Home Device With

Power over Ethernet (PoE) can power more than cameras and APs, providing flexibility for various devices. PoE splitters enable running devices like



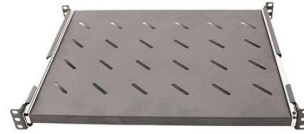
Power over Ethernet (PoE) ICs , TI

Power over Ethernet (PoE) offers an easy and reliable solution to combine power and data in one cable with high data rate and long reach. This combination makes PoE ideal for small devices such as



Everything You Need to Know About PoE

Learn everything you need to know about PoE technology, including what is PoE, how does PoE work, key benefits, and Ruijie Networks' PoE switches and solutions.



How to Power Your Raspberry Pi With PoE (Beginner's

An expansion card (PoE HAT) and a compatible network solution (PoE switch or injector) are required to power a Raspberry Pi over Ethernet. The

Why my PoE powered device cannot work properly

If you have an IP Phone, IP camera or other PoE powered device but it cannot work when connected to the PoE switch, please check this article and do some



Power Supply Standards for POE Switches. Why is the

At the moment, IEEE 802.3af (PoE), IEEE 802.3at (PoE+), and IEEE 802.3bt (PoE++) are the three primary power supply specifications for PoE. Each



Everything You Need to Know About PoE Power

PoE enables centralized power management and monitoring of network devices, which is highly beneficial for efficient network operation and



PoE: A Comprehensive Guide to Power Over Ethernet , Phihong

Explore the essentials of Power Over Ethernet (PoE) with Phihong USA. Your trusted source for innovative PoE solutions and technologies.



DIY Power Over Ethernet (PoE) Installation Guide , Step-by-Step

DIY Power Over Ethernet (PoE) Installation: Step-by-Step Guide Welcome to our comprehensive DIY guide on installing Power Over Ethernet (PoE) in your home network. In this video, we'll walk you





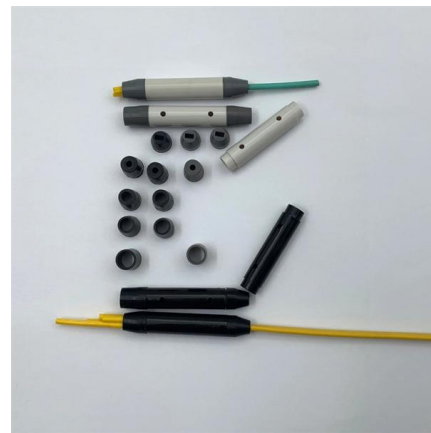
How do I troubleshoot problems with my NETGEAR PoE

This article provides troubleshooting information for common Power over Ethernet (PoE) problems with NETGEAR PoE switches. PoE and PoE



Power over Ethernet Flush-Mounted Power Supply

As a Power over Ethernet (PoE) adapter compliant with IEEE802.3at (PoE+), it provides sufficient power even for large tablets and enables an Ethernet data



The Ultimate Guide to Power Over Ethernet Switches:

Discover everything you need to know about PoE switches in our ultimate guide. Learn how Power over Ethernet simplifies network deployment

Which PoE switch to use with Ubiquiti Unifi Access Points

We've written this guide to help people who want to set-up their own Ubiquiti Unifi WiFi network, but aren't sure which Power over Ethernet (PoE)



PoE+ Network Switch

PoE+ Network Switch Power over Ethernet Plus (PoE+) network switches are a game-changer for both home and business networking solutions. These innovative devices streamline connectivity by



Power-over-Ethernet (PoE): Alles, was du wissen musst

Erfahre alles über Power-over-Ethernet (PoE): Standards, Anwendungen und Entwicklungen. Dein umfassender Ratgeber für PoE



What is a PoE Switch

A Power over Ethernet switch is a network switch that has PoE functionality integrated. Learn about different variations, limitations and benefits of





Power over Ethernet

Overview
Standard implementation
Techniques
Standards development
Uses
Terminology
Power management features and integration
Non-standard implementations

Standards-based Power over Ethernet is implemented following the specifications in IEEE 802.3af-2003 (which was later incorporated as Clause 33 into IEEE 802.3-2005) or the 2009 update, IEEE 802.3at. The standards require Category 5 cable or better for high power levels but allow using Category 3 cable if less power is required. In multi-pair cases, PoE supplies power as a common-mode signal over two or more of the differential pairs



Power over Ethernet (PoE): Der komplette Guide 2026

Power over Ethernet (PoE) einfach erklärt: Strom via Netzwerkkabel für WLAN & Co. Alles über PoE Switches, Standards (af/at/bt) & Vorteile.

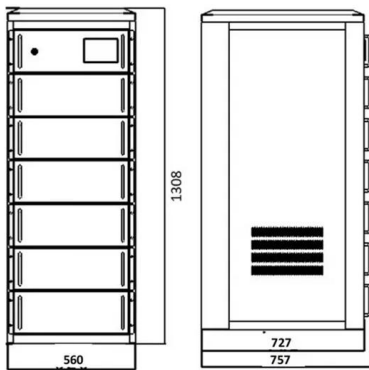
Troubleshooting PoE on MS switches

This document aims to help provide a basic understanding of how PoE is provisioned on MS switches and some troubleshooting steps to help identify issues with PoE failure on a switch or switch ports.



PoE+ power, amps and voltage

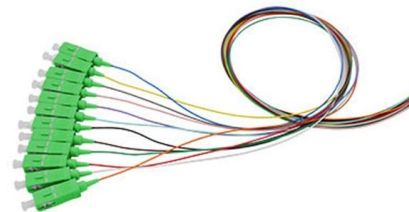
Increasing the voltage to the equipment to



reduce the current likely does not change its power consumption (which is $V \times I$) significantly. If you want that to work reliably you really need to go to a

What is a PoE Power Budget and How Do I Calculate it?

Power Supply Capacity: Begin by identifying the total power output capacity of the PoE switch. This is usually indicated in watts (W) and can typically be found in



Power over Ethernet (PoE) , Power Supplies

Power over Ethernet (PoE) power supplies allow designers to transmit electrical current and data over a single Ethernet connection. Remote devices are powered

Powering Philips HUE Hub with PoE - Creating Smart

What benefits me the most with this solution: my hue hub is also now behind an UPS (uninterruptible power supply) as my switch is backed up by it.



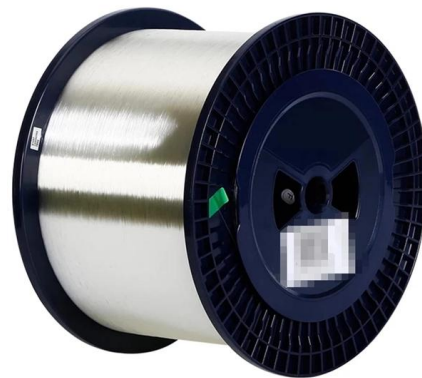


PoE Support on MS Switches

This documentation outlines Power over Ethernet (PoE) support, on Meraki switches, enabling efficient power delivery to connected devices for seamless network operations.

How to setup a POE network by using TP-Link POE products ?

TL-POE150S can work with POE Receiver such as TP-Link TL-POE10R or other POE Receiver. TL-POE10R is a POE Receiver Adapter, it need no external power supply adapter and receive power



PoE vs PoE+ vs PoE++ Switch: How to Choose?

This article explains the differences between PoE, PoE+, and PoE++ switches, and how to choose the right type that best suits your needs.

Contact Us

For datasheets, pricing, or custom telecom energy solutions, please visit:
<https://koskolong.co.za>