



**Adam Tas Corridor Energy**

# **Monitoring power distribution box without mounting plate**

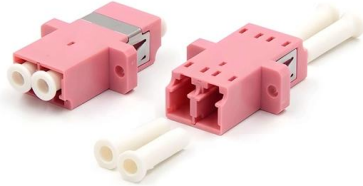




## Monitoring power distribution box without mounting plate

---

### How to Make a Smart Power Distribution Board With Real-Time



Build a smart power distribution board with real-time monitoring. Learn components, wiring steps, sensors, and expert tips from an electrical control panel guide.

### Best Remote Monitoring Power Distribution Units of 2026

What are the best remote monitoring power distribution units products in 2026? We analyzed 1,837 remote monitoring power distribution units reviews



### Plug & Play Monitoring for Distribution Substations

Since the infrastructure is very durable and not all distribution substations are equipped with sensors, this paper presents a Plug & Play monitoring system that can be easily integrated into



### PDU: Monitoring and Control

Monitoring power consumption: Monitoring the voltage, current, can give you real time data and ensure that current capacities are within limits



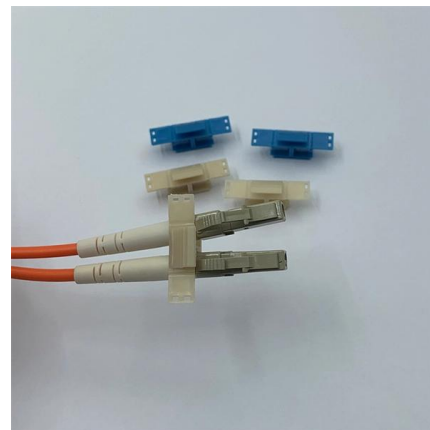
### **MNS® Low Voltage Distribution Board and Power Cabinet**

Features ABB distribution board and power Cabinet conform to GB7251.3-2006. Product includes distribution board, lighting control panel, metering panel, and power cabinet., They are suitable for



### **Power Distribution , Using the Power Distribution Box**

To prevent damage to equipment, check your work before turning the breaker switch ON. Each configuration of the power distribution box is suited for a specific case.



### **A Low-Voltage Distribution Box with Energy Monitoring and Carrier**

Abstract: A low-voltage distribution box with both energy monitoring and carrier communication capability is developed to collect, store and transmit multi-channel current, voltage, power, and





## Safe, Reliable Power: The Ultimate PDU Buying Guide

Find the ideal server rack PDU with this power distribution unit guide. Learn about types, remote control, surge protection, and capacity planning.



### WTYJ-PD type distribution box monitoring system

The WTYJ-PD type monitoring instrument complies with the international standard IEC 62053-21/22/23:2020. Through the "cloud-pipe-terminal" integrated architecture, it realizes the optimization

### WTYJ-PD type distribution box monitoring system

1. Introduction and Application Model:WTYJ-PD Product positioning Intelligent distribution box monitoring instrument, supporting real-time electrical data collection, energy consumption



### Power management and monitoring

Take your power distribution equipment to the next level by managing your critical loads at the individual circuit level. Rely on Cyberex circuit management solutions to monitor and alert your staff of potential



## The installation requirements for the distribution box

Learn how to install a distribution box safely and correctly. Covers wiring, placement, standards, and expert tips for a compliant setup.



## Understanding Basic PDUs: A Comprehensive Guide to

Whether you choose a basic PDU, a rack-mounted power distribution unit, or the best power strip for flexibility, understanding your power needs and making



## Low voltage Distribution Box Monitoring

In this Paper, the primary focus is on the distribution box health monitoring from which load power distribution monitoring is done. Distribution box is one from which power is distributed to low level.





## Enclosure Mounting Plate: A Complete Guide

In enclosures used in IT and Networking data centers, mounting plates support routers, power supplies, the cables. HVAC and energy systems as

## What is an Electrical Distribution Box? A

Discover everything you need to know about electrical distribution box! Learn about types, components, and how to choose.



## Wall Mounted Outdoor Universal Electronic Equipment Enclosure Box

Wall Mounted Outdoor Universal Electronic Equipment Enclosure Box, Weatherproof Metal Electrical Junction Box, Monitoring Box Distribution Protection Box with Safety Locks and Mounting Plates -

## PDU

Power, Environmental, Security & Connectivity Hardware Panduit power distribution, environmental, and connectivity systems improve availability, scalability, power,



### Power Distribution Equipment

Mini Power-Zone: Mini Power-Zone combines a transformer and circuit breaker distribution panel into a single wall mounted substation. The substation includes a primary main circuit breaker, sealed step



### Power Distribution Unit (PDU) Basics

2. Smaller devices fitted with multiple appliance outlets designed to provide power to units within a rack space (rack mount PDU). This type of power distribution unit



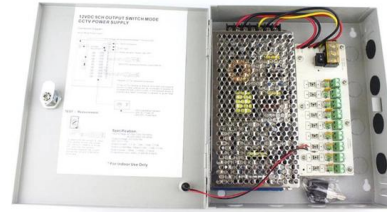
### The Best Solution to Install Components Inside The

The trickiest part of installing inner components of a distribution box is that the components' heights are irregular. E-Abel's flexible mounting bracket can

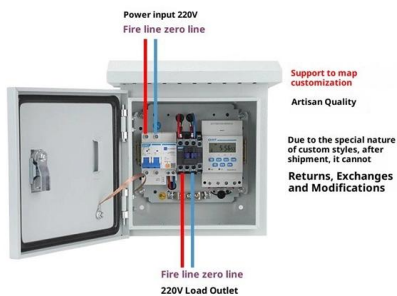


## Cabinet & floor standing PDU solutions

Beyond the capabilities of a power strip, a rack PDU offers a range of intelligent features to help control the power distributed to IT devices. Rack PDUs are used in 120V, 200-240V and other environments



### Product Wiring Diagram



## POWER DISTRIBUTION UNITS

The 1-phase or 3-phase inline power meter with an illuminated display is designed for measuring of parameters on the lead-in cable to basic PDUs and is easy to connect into existing circuits.

## Power distribution unit

A power distribution unit (PDU) is a device fitted with multiple outputs designed to distribute electric power, especially to racks of computers and networking equipment located within a data center.



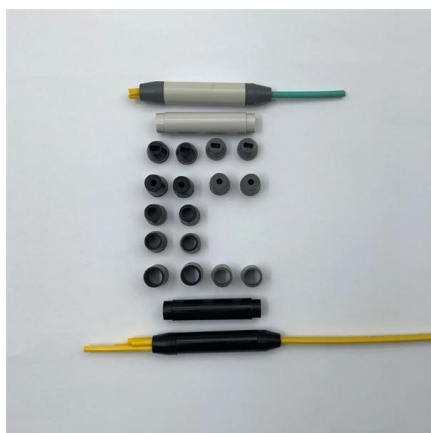
## 10 Distribution Board Types Explained [May 2026 ]

Key Takeaways A distribution board safely distributes electrical power from a main source to various circuits and areas within a building. There are 10



### Best Remote Monitoring Power Distribution Units of 2026

These devices provide remote monitoring and control of power distribution to individual servers and networking equipment. With the ability to

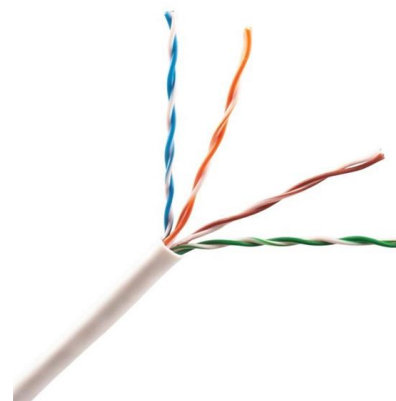


### Distribution Grid Monitor

The DGM is a power monitoring solution-also known as a "primary in a box"-that consists of a Bitronics M661 meter, matched Lindsey LEA (low energy analog)

### Power Distribution Boxes: A Complete Overview , Eventech

Power distribution boxes, or PDUs, are essential for efficiently distributing electrical power to various equipment and devices in industrial and commercial settings.





## Contact Us

---

For datasheets, pricing, or custom telecom energy solutions, please visit:  
<https://koskolong.co.za>