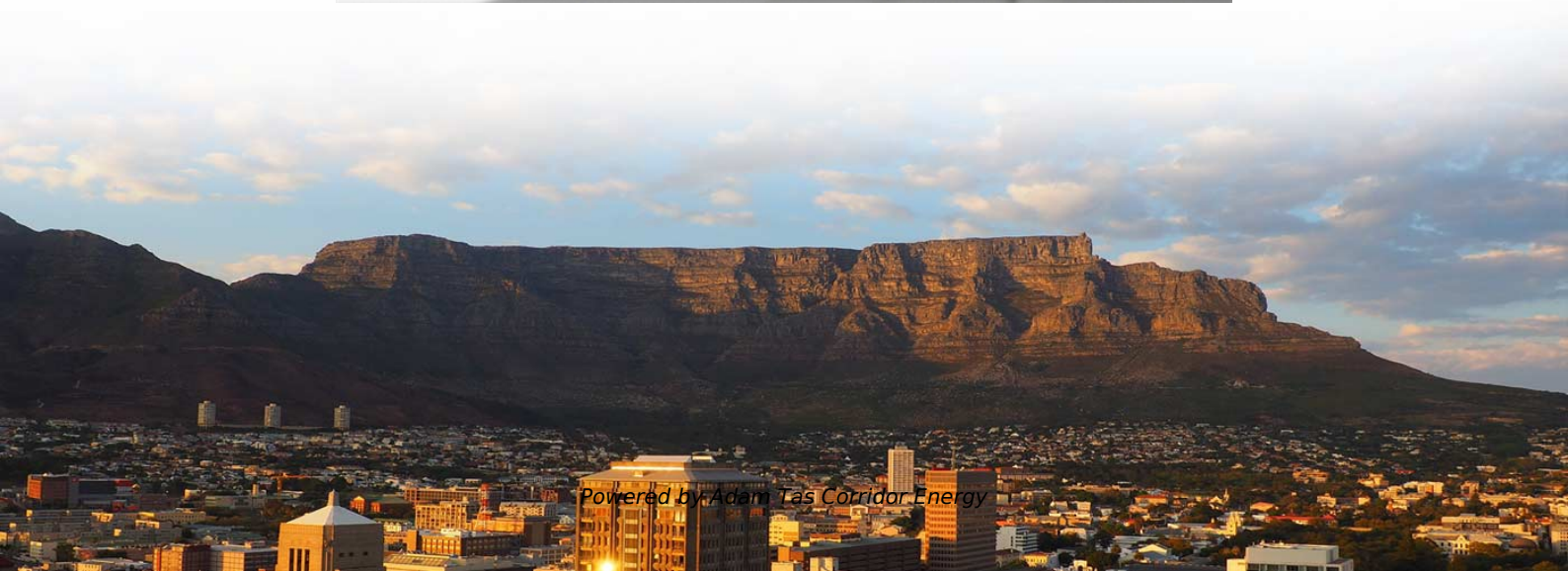




Adam Tas Corridor Energy

Must power distribution cables be run in cable trays





Overview

Cable trays are a support system for electrical cables, power, signal, and communication and optical fiber cables. NEC Article 392 governs cable tray installations, covering tray types, fill limits, cable types permitted, and ampacity adjustments. The fill rules differ significantly between single-conductor cables and multiconductor cables, and between ladder tray and solid-bottom tray. Grounding: Metallic trays can serve as equipment grounding conductors (EGC) if they meet NEC requirements. Cable tray capacity, whether hand-bendable wire, rigid basket trays, or heavy duty aluminum or steel ladders, is covered under Article 392 of the NEC (NFPA 70), produced by the National Fire Protection Association. NEC section 300-8 does not permit any tube, pipe, or equal for water, air gas, drainage, steam, or any service other than electrical in raceways or cable trays containing.



Must power distribution cables be run in cable trays



What Are Cable Trays and How Do They Work?

Essential Roles in Infrastructure Cable trays are deployed in large-scale settings where a high volume of cables must be managed efficiently over long distances. They are common in industrial environments

Best Practices for Installing Cables in Trays

Quick Installation Checklist (Key Steps) Cable tray cable installation generally follows these steps: Inspect cables before installation Prepare and



Cable trays are structural components of a facility's electrical system

Since cable tray installations and the cables allowed in those trays are covered by OSHA and the NEC, the installations are also covered under BNL's Electrical Material and Installation Inspection (EMII)

Cable Tray Installation Rules (NEC 392) - Electrical Trader

Mixing high-power cables with low-power signal cables (like data or internet lines) in the same



tray is not recommended unless a solid divider wall is used. EMI from power cables can disrupt



Cable Tray, Cable Bus, Wire Mesh Cable Trays , MP

MP Husky manufacturers Cable Tray Systems, Cable Bus System, Wire Mesh/Wire,Cable Tray, & Cable Management Systems. Our cable support



Do Tray Cables Need to Be in Conduit? A Complete Guide

Tray cables are multi-conductor cables manufactured and tested to withstand industrial environments. They're commonly used in power distribution, control circuits, instrumentation and



Cable Current Carrying Capacity Calculator , Sizing & Ampacity ?

The Definitive Guide to Cable Sizing: Mastering Ampacity, Voltage Drop, and EV Charger Installations In the vast and intricate world of electrical engineering, few tasks are as universally

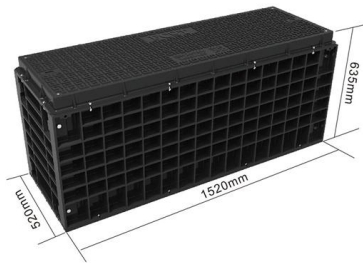


- 50KW/100KWH
- HIGHER POWER OUTPUT IN OFF-GRID MODE
- CONVENIENT OPERATION & MAINTENANCE
- PRE-WIRED



Cable Tray Technical Guide A practical guide to product selection and

Cable tray is considered to be a system. It must provide continuous support for cables, and the electrical continuity of the cable tray system must be maintained.



GUIDE CABLE TRAYS TECHNICAL

In accordance with its continuous improvement policy, Legrand reserves the right to change the specifications and illustrations without notice. All illustrations, descriptions and technical information

Annex I

When cable trays have to run through or under raised floor areas, an easy access all along the cable tray paths in these areas must be kept (no material should be placed or stored on the corresponding

LoRawan outdoor base station

- * Industrial Internet gateway
- * Compatible with LoRaWAN network,
- * ClassA/B/C mode
- * Support 8/16 channel
- * Supports PoE power
- * supply and backup battery power supply
- * 10KV lightning protection



Comparing Cable Tray and Cable Bus for Power Distribution Systems

Single conductor 750MCM cables laid in a tray with at least one diameter spacing. This tray solution requires 6 cables per phase and a minimum tray width of 43 in, therefore a 48 in-wide tray is selected.



Cable Tray Fill Rules (NEC 392)

Cable Tray Fill and Installation per NEC 392 Cable tray types, fill rules for single-conductor and multiconductor cables, ampacity derating, separation



Standards & Power Distribution Code Compliance

It states that for cable trays containing control and/or data cables only (not power), the sum of the cross-sectional areas of all cables at any point shall

Cable Tray Questions , Cable Tray Institute

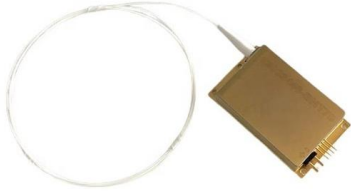
Question 1: Can mechanical utility piping or tubing containing water or compressed air be installed in cable trays with electrical cables?
Answer: No. Cable trays are a support system for electrical cables,





NVIDIA HGX Platform: Data Center Physical

Learn the strict physical requirements for deploying NVIDIA HGX platforms from Hopper to Blackwell. Covers power (10-140 kW/rack), liquid cooling, rack design,



Installation Of Cable In Cable Trays: NEC, Safety

Installation of Cable in Cable Trays ensures proper routing, cable management, NEC compliance, grounding, fire safety, and load capacity.

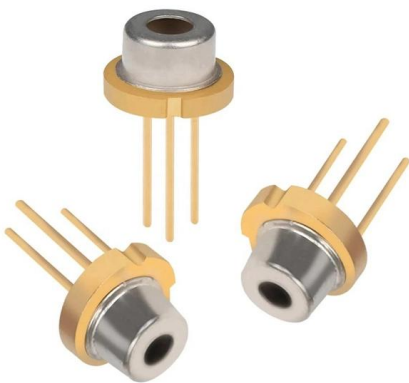


A Guide to Installing and Supporting Electrical Cable Trays

A professional guide to installing electrical cable tray systems per NEC Article 392. Covers support, securing cables, and fill calculations.

Cable Tray SHIB NAL

Cable trays are not raceways, but they are treated as a structural component of a facility's electrical system. Cable trays are a part of a planned cable management system to support, route, protect and



Cable Tray Questions , Cable Tray Institute

The NEC in section 318-8 (b) indicates that in other than horizontal runs, cables shall be securely fastened to transverse members of the cable trays. For vertical installations, the cables may hang

Cable Tray Technical Guide A practical guide to product selection and

SOLID-BOTTOM CABLE TRAY Providing additional cable protection, solid-bottom cable tray is sometimes preferred to support and protect numerous small instrumentation and control cables.



The Ultimate Guide to Tray Cables: Types, Applications and

Tray cables (TC) are multi-conductor cables designed and rated for installation in cable trays and raceways or supported by messenger wires. Unlike standard electrical cables, tray cables feature



Ampacity of Power Cables Installed in Cable Trays

Explore the factors affecting cable ampacity in trays, including thermal and electromagnetic effects. Learn calculation methods and best practices for safe

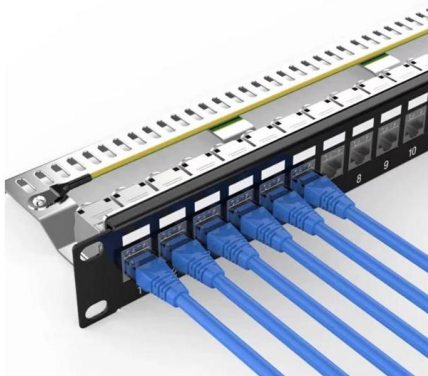


The Role of Cable Trays and Conduits in Efficient Power Distribution

Cable trays and conduits may seem like background elements in the power distribution ecosystem, but they are critical to the stability, safety, and efficiency of any electrical system.

FactSheet

Cable trays feature flexibility unmatched by conduit, as cables are easier to mark, remove and find in cable trays. Cable trays are available in a number of different configurations, including ladder,



Cable Laying: Everything You Must Know

After determining the routing of the cabling, a structured cabling project initially needs to consider the laying of cable trays, which can be made of metal, conduit, or



Best practices for underfloor cable management

Power cables are run close to the floor in cable tray located in the cold aisle, underneath perforated floor tiles. Arranging the cables in this way provides horizontal separation by allocating different rows of



Cable Tray Questions , Cable Tray Institute

NEC section 318-5 (e) indicates that multiconductor cables rated 600 volts or less are permitted in the same cable tray, however, separation of power and control cables is necessary as indicated in other

Cable Tray Systems: Requirements and Best Practices

This article explains the main requirements and good practices for cable tray systems, including tray types, materials, loading, supports, bonding, cable selection, and installation details.



Contact Us

For datasheets, pricing, or custom telecom energy solutions, please visit:
<https://koskolong.co.za>