



Adam Tas Corridor Energy

NCS code optical module





NCS code optical module

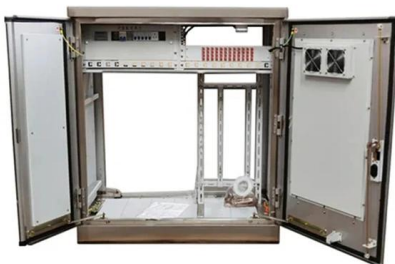


Cisco NCS 5500 2x200G CFP2 MPA , Router Expansion Module

Expand NCS 5500 capacity with 2 x 200G CFP2 ports, optical fiber support, and carrier-grade modular design for high-density routing.

Cisco Network Convergence System (NCS) 2000 Series

Smart Net Total Care NCS 2000 Series Discover a touchless, customizable optical network Enjoy the touchless programmability, scalability, and ultra-long-haul



Cisco Network Convergence System 4000 Multi-Chassis

The Cisco ® Network Convergence System 4000 (NCS 4000) is a converged optical service platform providing Dense Wavelength-Division

OPT201

It covers how to plan, configure, and control optical networks using the Cisco Network Convergence System (NCS) 2000 Series Flex



Spectrum platform.



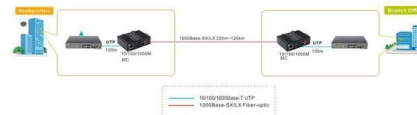
Installing the Cisco NCS 2015 Door and Other Modules

The NCS 2015 external connection unit (ECU) is a replaceable module that provides interfaces for passive device inventory and management, multishelf management, and element management.



NCS 2000

Hi, A 6-Add/Drop module is a colorless, flexible spectrum module that accepts any wavelength within the ITU-T Grid. "Alien Wavelength" means that the source of the wavelength is not



Ordering information

Model	1	2	3	4	5	6
Model	SP2001	SP2002	SP2003	SP2004	SP2005	SP2006
Product name	Patch Panel	Patch Panel	Patch Panel	Patch Panel	Patch Panel	Patch Panel
Illustration						
Maximum number of ports	144	288	576	144	288	576
Product size (including modules and adapters)	482.8*202*74 (mm)	482.8*202*78.1 (mm)	482.8*202*77 (mm)	482.8*202*74 (mm)	482.8*202*78.1 (mm)	482.8*202*77 (mm)
Standard color code	RAL9005	RAL9005	RAL9005	RAL9005	RAL9005	RAL9005
Inventory	2	2	2	2	2	2

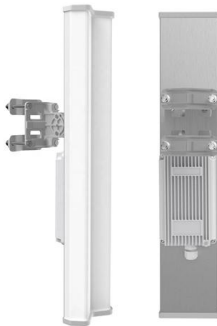
Installing the Cisco NCS 2006 Door and Other Modules

The NCS 2006 system can be powered by redundant DC power modules or a single DC power module. The supported DC power modules on the NCS 2006 shelf are NCS2006-DC and NCS2006-DC20.



Cisco Routed Optical Networking , Design , XRdocs

Cisco supports Routed Optical Networking in the NCS 540, NCS 5500/5700, ASR 9000, and Cisco 8000 router families. The breadth of coverage



Cisco Routed Optical Networking , Design , XRdocs

The NCS 2000 Optical Line System is a flexible platform supporting all modern optical topologies and deployment use cases. Simple point to point to

Configuration Guide for Cisco NCS 1001, IOS XR

When you plan to replace a configured optical module with a different type of optical module, you must clear the configurations of the old module before



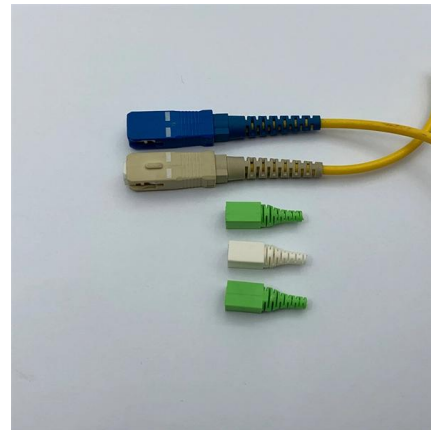
Optical Module Coding Explained

Optical Module Coding is the digital key ensuring network device compatibility and stability by verifying module specs, aiding intelligent



Troubleshooting Guide for Cisco NCS 1004, IOS XR Release 24

General Troubleshooting This chapter provides procedures for troubleshooting the most common problems encountered when operating the NCS 1004 chassis. To troubleshoot specific alarms, see



Cisco NCS 1000 Breakout Patch Panel and Modules Overview

Cisco NCS 1000 Breakout Modules The breakout modules are a set of three optical breakout units. The modules can be connected to the A/D 4-11, A/D 12-19, A/D 20-27 and A/D 28-33 MPO connector



Cisco Network Convergence System 4000 Series Data

Product overview The Cisco ® Network Convergence System 4000 (NCS 4000) Series is a converged optical service platform providing Dense



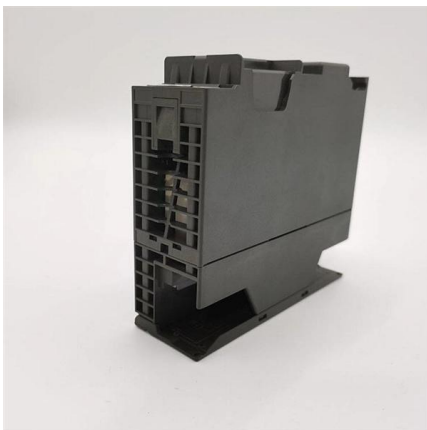
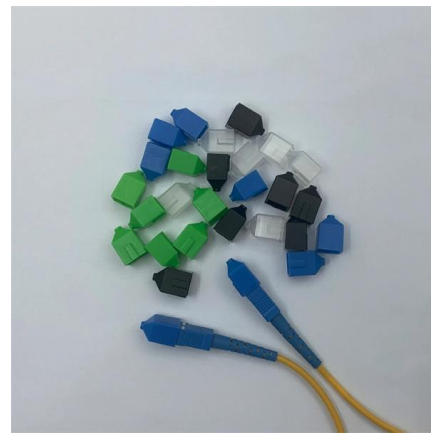


Configuration Guide for Cisco NCS 1001, IOS XR

Configure OTS Controller The Optical Transport Section (OTS) controller holds all the optical parameters for the OTS optical interfaces. The

Interface and Hardware Component Command Reference for Cisco NCS

This module provides command line interface (CLI) commands for configuring controllers on the Cisco NCS 5500 Series Router. For detailed information about optics and DSP controller



Cisco NCS 1001 Overview

Cisco NCS 1001 Overview Cisco NCS 1001 (NCS1001-K9) is 1 RU chassis that addresses the growing bandwidth needs of data center DWDM applications. It provides a DWDM line system that is

CISCO NCS1K-EDFA Amplifier Module Repeater User Guide

Optical Amplifier Module The optical amplifier module (NCS1K-EDFA) has pre-amplifier and booster amplifier. The optical amplifier module provides the following functionality.



CISCO NCS 1001 MANUAL Pdf Download , ManualsLib

DWDM applications. It provides a DWDM line system that is optimized for data center environments and is optimized for point-to-point applications at maximum



Cisco Network Convergence System 2000 Series

Product Overview The Cisco ® Network Convergence System 2000 Series (NCS 2000 Series) features a suite of passive modules to accommodate



Configure Optical Modules

This chapter describes how to configure the Optical Amplifier Module and Protection Switching Module (PSM). When you plan to replace a configured optical module with a different type of optical module,





Cisco NCS 1001 Data Sheet

The Cisco NCS 1001 is a dense wavelength-division multiplexing (DWDM) line system that is mechanically optimized for data center environments; its performance is optimized for maximum



Interface and Hardware Component Configuration Guide for Cisco NCS

Configuration and troubleshooting guide for 400G Digital Coherent Optics, including modulation, FEC, and alarm management.

Colour codes, premium digital & physical colour design

Enhance your colour projects with NCS - Find your NCS colour codes and explore our digital and physical colour solutions and education to transform your colour



Cisco Network Convergence System 2000 Series Data

The Cisco Network Convergence System 2000 Series (NCS 2000 Series) delivers agility, programmability, and massive scale across ultra-long



Interface and Hardware Component Configuration Guide for Cisco NCS

The information in this chapter applies to all supported 400G Digital Coherent QSFP-DD optical modules unless otherwise specified. To determine the transceivers that Cisco hardware

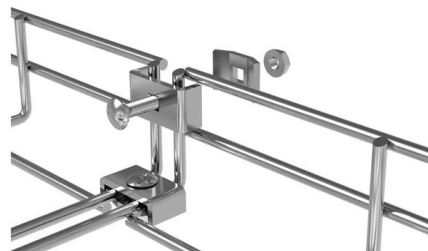


Follow NCS1001 Network Design Best Practices

Background Information The NCS 1001 provides optical amplification, protection switching, and Optical Time Domain Reflectometer (OTDR) capability in a 1RU

Cisco Network Convergence System 4000 Series Datasheet

To facilitate packet-optical integration, the form factor of the NCS 4000 Series is compliant with typical carrier environments, with a notably shallow footprint to address ANSI and ETSI transport equipment





Contact Us

For datasheets, pricing, or custom telecom energy solutions, please visit:
<https://koskolong.co.za>