



**Adam Tas Corridor Energy**

# **National Standard Optical Cable Outdoor Single Mode 4-Core**





## Overview

---

● LC to LC or SC to SC ● Single-mode /multimode for option ● OM3 for multimode ● Optical Fiber 4 Cores Inside ● Compatible with all standard fibre optic equipment and connectors ● Stainless Steel sheathed and metal braiding strengthened ● Ceramic ferrule ensure low signal. The OS2 designation refers to the cable's optical specifications, specifically its attenuation characteristics. High-quality LC-LC single-mode (mono-mode) Loose Tube installation outdoor cable for laying in a tube above- or underground. CommScope outside plant fiber optic cables are meticulously designed to withstand the rigors of outdoor environments while ensuring superior performance and broadband connectivity. For outdoor and indoor use in structured (data) wiring systems such as industrial backbone, campus backbone, building backbone (riser) and /or horizontal cabling.



## National Standard Optical Cable Outdoor Single Mode 4-Core

---

### 4-Core Single mode Fiber Optic Cable



4-Core Single mode Fiber Optic Cable also called 4-core Optical fiber cable, is a type of communications optical cable which has the same transmission speed as

### 4 Fiber Single-mode Custom Indoor/Outdoor Fiber

Save time splicing by making use of Fibertronics pre-terminated cable assemblies. This cable is a 4 Fiber Single-mode Custom Indoor/Outdoor Fiber Cable with Pre



### 4 Core Optical Fiber Cable Specification

4 Core Optical Fiber Cable Specification. Optical Fiber Cable 4 Core. Key Features.

### Loose Tube Outdoor Cable OS2, 4-Core, LC/UPC

High-quality LC-LC single-mode (mono-mode) Loose Tube installation outdoor



### 4-Core Single mode Fiber Optic Cable

Fiber optic 4-core round drop cable consists of four parts, PE plastic cover, multi-strand aramid yarn, PBT loose tube with jelly compound and optical fiber. These



### Fiber Optic Cable Jackets and Fire Ratings Explained

Learn about fiber optic cable jackets, materials, and fire ratings. Find the right jacket for plenum, riser, or general-purpose environments.



### Fiber Optic Cable Types Explained

Learn all about the differences between single mode and multimode cables, as well as the various fiber wavelengths and standard core sizes used in fiber optics.





## Opti-Core® LSZH Indoor-Outdoor All-Dielectric Fiber Optic Cable

The fiber cable shall have a loose tube, all-dielectric (non-conductive) construction with 6, 12, 24 or 48 fibers and comply with common industry standards for indoor and outdoor applications. To withstand



### Fiber Cable

Single Mode Indoor/Outdoor cables are available in 4, 8, 12 and 24 core in central loose tube design.



## CORNING OPTICAL COMMUNICATIONS GENERIC

2.0 Fiber Specifications 2.1 Detailed information on the fiber types available for this cable design can be found in the following documents: Dispersion Unshifted and Non-Zero Dispersion-Shifted Single



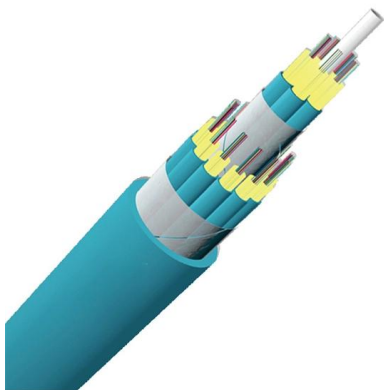
### Loose Tube Outdoor Cable OS2, 4-Core, LC/UPC

High-quality LC-LC single-mode (mono-mode) Loose Tube installation outdoor cable for laying in a tube above- or underground. Black multi-purpose cable with four



### **Fully Outdoor 4 Core Single Mode OS2 / FTTH Fiber**

Designed for demanding outdoor environments, this cable provides superior performance and durability, ideal for telecom, internet infrastructure, and



### **Fully Outdoor 4 Core Single Mode OS2 / FTTH Fiber**

1310nm:0.296dB/km. Ensure high-speed, long-distance data transmission with this 4 Core Outdoor Single Mode Fiber Optic Cable (9/125). Designed for demanding

### **Installation cable Loose Tube Singlemode for indoor and outdoor use**

High-quality LooseTube cables in singlemode OS2 for indoor and outdoor installation in various versions with Rodent Protection and Pulling-Eyes. The cables are generally sent with a measurement report.





## Fiber Outside Plant Cables

CommScope outside plant fiber optic cables are meticulously designed to withstand the rigors of outdoor environments while ensuring superior performance and broadband connectivity. Crafted with high

### NOAD12MA004BKAA

For outdoor and indoor use in structured (data) wiring systems such as industrial backbone, campus backbone, building backbone (riser) and /or horizontal cabling.



### Buy 9/125 (OS2) MultiCore Fibre Cable

The cables are constructed around E-Glass roving strength containing buffered 9/125 fibres, covered with a flame retardant, low smoke zero halogen, UV stabilised outer sheath. The improved

## Fiber Optic Cables

APPLICATION The cable is specially designed for harsh environments. The internationally known multilayer inner sheath ALPA® construction: Aluminium/HDPE/PA (nylon) withstands aggressive



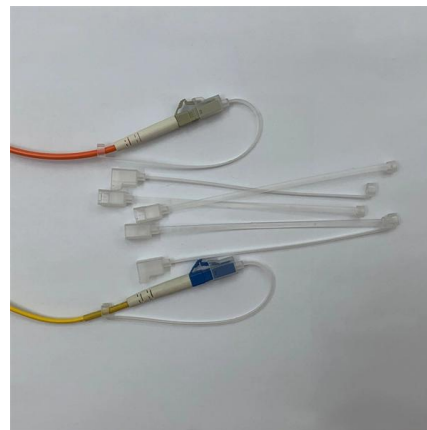
### **OS2 LC to LC Outdoor Armored Fiber Optic Cable 4**

5.0mm Outer Diameter Armored--- The OS2 LC 4-core outdoor armored fiber optic cable features a larger 5.0mm outer diameter, providing superior robustness



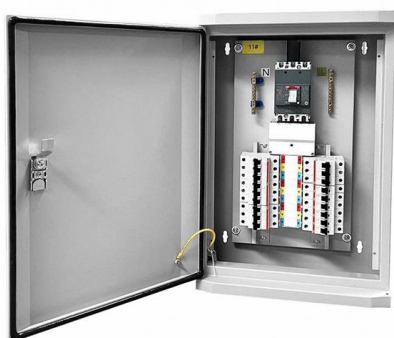
### **1-1427434-4 Product Specification**

1-1427434-4 Outside Plant Fiber Optic Cable, armored, 12-fiber, SM, OS2, loose tube, gel-filled, 1000 m



### **SINGLEMODE 9/125 FIBER OPTIC OPTICAL CABLE**

1 Year Product Warranty NETWAY warrants all its optical cable product to be free from defects in material and workmanship for a period of one(1)year from the factory shipment date.If a breach of





## Key Specifications of Single-Mode Fiber Optic Cables:

Explore the essential specifications of single-mode fiber optic cables, including core size, attenuation rates, bandwidth capabilities, and standard



## Fibre cable Outdoor 4 Core Singlemode SM Per Metre

Fiber optic cables provide more bandwidth for carrying more data than copper cables of the same diameter. Within the fiber cable family, single mode fiber delivers up

## Corning 144 Strand FastAccess Singlemode Loose

General Specifications Environment : Outdoor  
Browse Applications : Aerial, Duct Cable Type :  
Loose Tube Product Type : Dielectric Fiber  
Category : Single-mode



## Single Mode Fiber Optic Cables ,

These custom-manufactured fiber cables are designed to withstand challenging environmental conditions and can be equipped with project-specific features. They are suitable for use in



## Fiber Indoor & Outdoor Cables

Learn more about high-performance indoor/outdoor fiber cables by CommScope. Enhance connectivity with precision



## 4 Core Optical Fiber Cable

Our 4 Core FTTH Single Mode Optical Fiber Cables are designed to meet the high demands of modern telecommunications networks. With an outer diameter (OD)

## Fibre Cable 4 Core SWA Loose Tube Singlemode 9/125

Fibre Cable 4 Core SWA Loose Tube Singlemode 9/125 OS2 Steel Armoured cables primary use is with direct burial or industrial applications. The base construction





## **The Ultimate Guide to 4 Core Optical Cable: Specs, Color Codes, and**

In the world of network infrastructure, the 4 Core Optical Cable is arguably the most versatile choice. Whether for long-distance outdoor transmission or internal building backbones, it offers the perfect

## **Contact Us**

---

For datasheets, pricing, or custom telecom energy solutions, please visit:  
<https://koskolong.co.za>