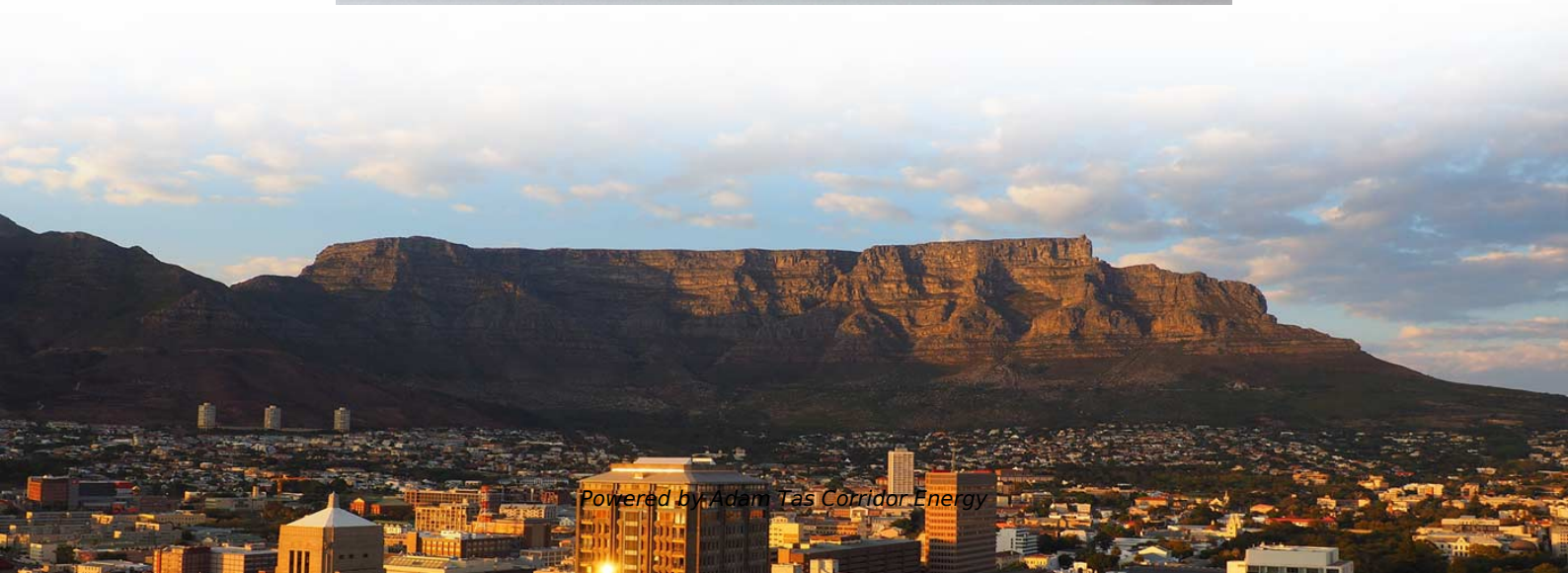
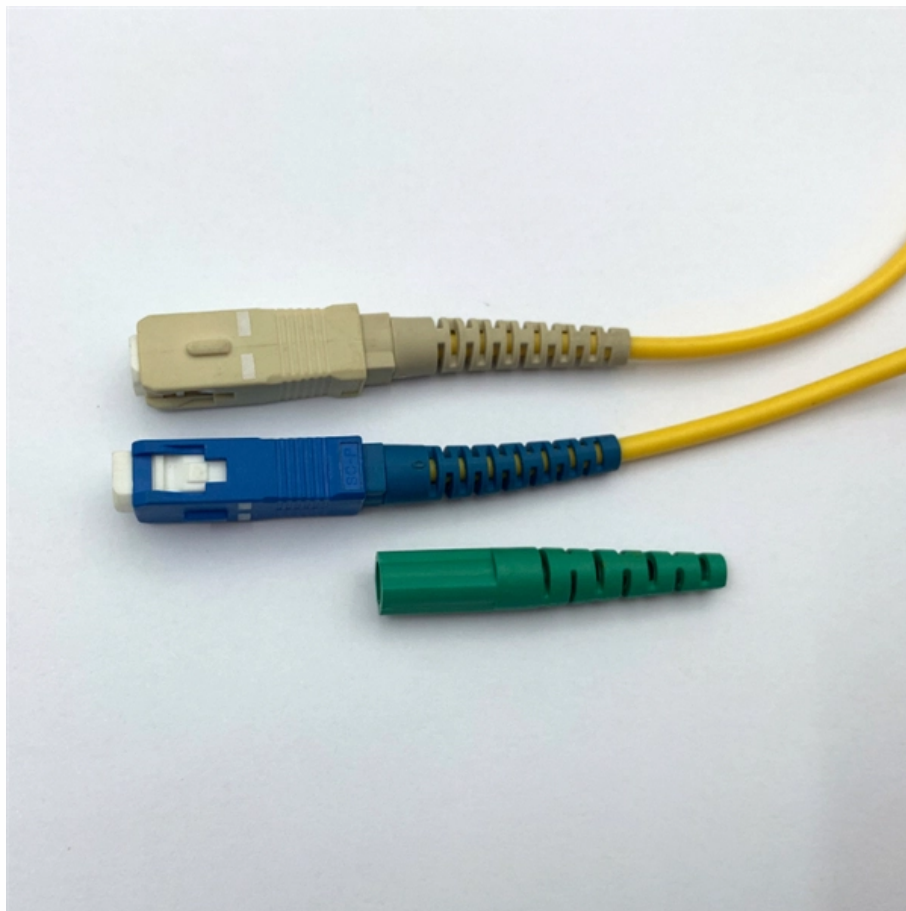




Adam Tas Corridor Energy

Network rack sockets need to have switches





Overview

Rackmount switches are essential equipment devices that enable you to connect multiple network devices centrally. These switches can be installed in a rack port, along with other UPS systems and PDUs. What is a Networking Rack?

A networking rack, often referred to as an equipment rack, stands as a.



Network rack sockets need to have switches



Rack Specifications

For a two RU (rack unit) switch, 3.5 inches (8.8 cm)
For a three RU (rack unit) switch, 5.25 inches (13.3 cm)
The width between the rack-mounting rails must be at least 17.75 inches (45.0 cm) if the rear of

Comprehensive Guide to Rackmount Switches:

Rackmount network switches are ideal for industrial networks demanding a huge amount of flexibility. Owing to their routing and switching capabilities, these



What Is a Network Switch, and Do You Need One?

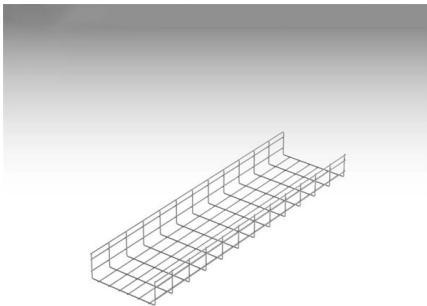
A network switch adds more ports to your router. It's useful if you have a lot of wired devices in one place, or if you want to wire your home for

What Is a Network Rack? , Data Center Glossary , Sunbird DCIM

A network rack is a critical infrastructure component in data centers and IDF closets. It



provides a structured and organized housing solution for networking equipment including switches, routers, and



Grid Cable for marine and offshore applications

How to Mount a Network Switch to a Rack?

The rack mount switch can be installed in a standard 19-inch equipment rack or on a desktop or shelf. So how do you mount a network switch

What is ToR (Top-of-Rack) Switching?

Learn about top-of-rack (ToR) switching, a network design that streamlines your data center. ToR switches reduce clutter, improve performance,



Mastering the Art of Rack Mounting: A Comprehensive

Discover the essentials of rack mounting with our comprehensive guide. Learn about durable rack enclosures, installation tips, and network switch



Rack Mount Servers and Switches for Data Centers: A

This white paper explores the key aspects of rack mount servers and switches, their critical role in data center operations, and considerations for their



Understanding Routers, Switches, and Network Hardware

When do you need a switch? A hub? What exactly does a router do? Do you need a router if you have a single computer? Network technology can be

Mounting Configurations, Network Switch Setups

Learn how to optimize network switch setups by mastering mounting configurations. Explore rack, wall, and desktop mounting options for enhanced performance and



What power provisions do you have for your server racks?

The circuits are dedicated to the server rack, there's no other sockets connected to them - we have the electrical consumer unit in the server room so



3 Installing the Switch in a Rack

When populating empty chassis slots, start filling the upper slots first and work down to the bottom slots. This chapter describes how to install Catalyst 4500 series switches in a rack. For first-time

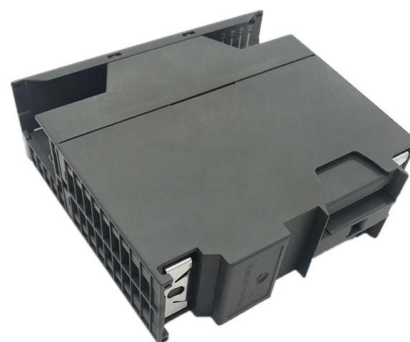


7 steps for organizing your server rack space

Introduction. Why you need order in the rack A server rack with a well-organized cable management and thoughtful arrangement of equipment is not

Basic Info on Network Racks

In this article, let us look at some basic information about a network rack - we'll see what a network rack is and why it is required, the two types of





How to mount switch in rack--Entire switch rack

Whether you're setting up a new data center, a server closet, or a home lab, knowing exactly how to mount a switch in a rack is an essential skill.

25 Steps For Installing New Server Racks

Nearly every business needs at least one server rack to house networking equipment, and some businesses might need several. However, unless you or someone on your team has data



Installing the Switch in a 4-Post Rack

To install the switch, you must attach the front and rear mounting guides to the switch, install the slider rails on the rear of the rack, slide the switch into the slider rails, and secure the switch to the front of

3 Installing the Switch in a Rack

Rack-Mounting the Switch A standard rack-mount kit is included for mounting the switch in a standard 19-inch (48.3 cm) equipment rack with two unobstructed outer posts, with a nominal depth (between



Rack Mount Servers and Switches for Data Centers: A

Rack mount servers and switches are essential components of modern data centers, enabling high performance, scalability, and efficiency. By carefully



Network Rack Installation 101: Basics You Need to Know

Read the article to know the basics of network rack installation, from choosing the right rack type to cable management and maintenance tips.



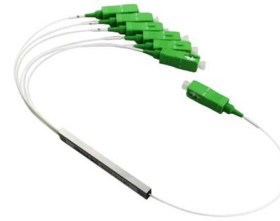
Support

· To ensure stability of the rack, install the slide rails to the lowest possible position when installing a single switch in the rack. To install multiple switches in the rack, mount the heaviest switch at the



Maximize Efficiency with the Right Rack-Mount Network Switches for

Discover the perfect rack-mount network switch to boost efficiency and performance. Explore options with fibermall today!



Router vs Network Switch Key Differences Explained

A router connects your network to the internet, while a switch links devices within your LAN. Compare router vs switch for your 2025 network needs.



Networking Rack Guide: Organizing Your Devices

This setup is designed for 'rack-mountable' equipment, a category that includes essential networking tools such as hubs, routers, Ethernet switches,

Rack Mount Switches Decoded: A Comprehensive

In conclusion, rack-mount switches are crucial in building a reliable and efficient network infrastructure. We have explored the different types of rack



Guidelines for Server Rack Organization

When mounting all of the equipment (such as servers, storage, switches, and routers) into the server rack, a good server rack organization will

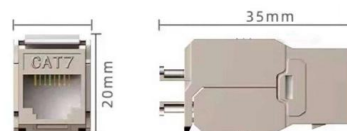


How to Correctly Wire a Network Rack? - VCELINK

Wiring a network rack isn't merely a technical exercise, it's an investment in the performance of your system and your peace of mind. Properly

Server Rack Buying Guide: Everything You Need To Know

This server rack buying guide will help you understand what a server rack is and key factors for your data center environment or IT closet.





Networking Rack Guide: Organizing Your Devices

In the realm of network infrastructure, efficient organization and accessibility of devices are paramount. This ultimate guide delves into the world



Mounting Configurations, Network Switch Setups

Rack mounting is the most common method used for housing network switches in data centers and server rooms. Switches are installed on standard 19-inch racks



Contact Us

For datasheets, pricing, or custom telecom energy solutions, please visit:
<https://koskolong.co.za>